

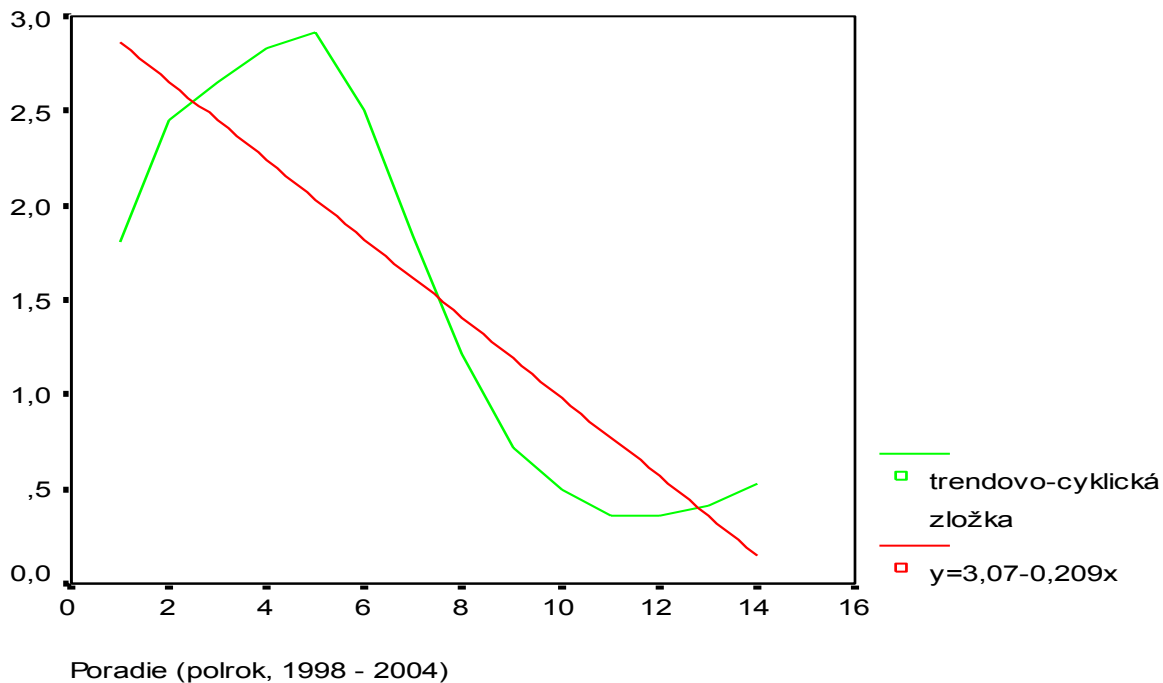
Príloha č. 5

Vyhodnotenie časových radov monitoringu

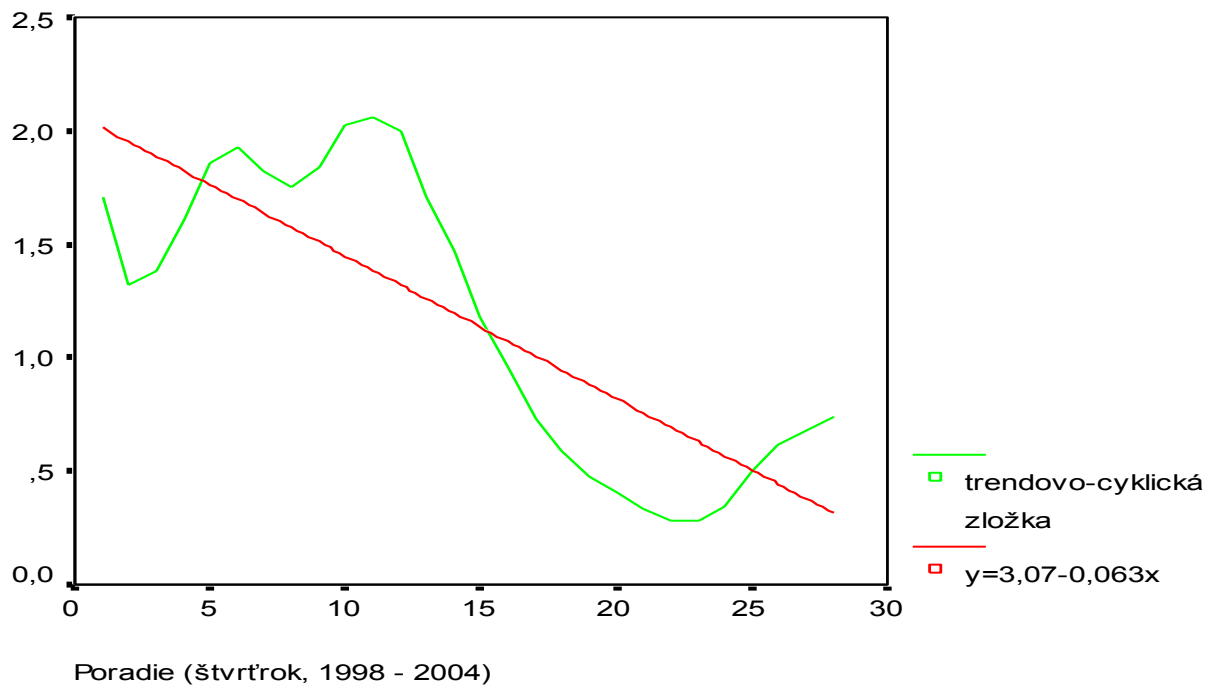
Kamenica - Piesky (5,0 - 9,0 m)



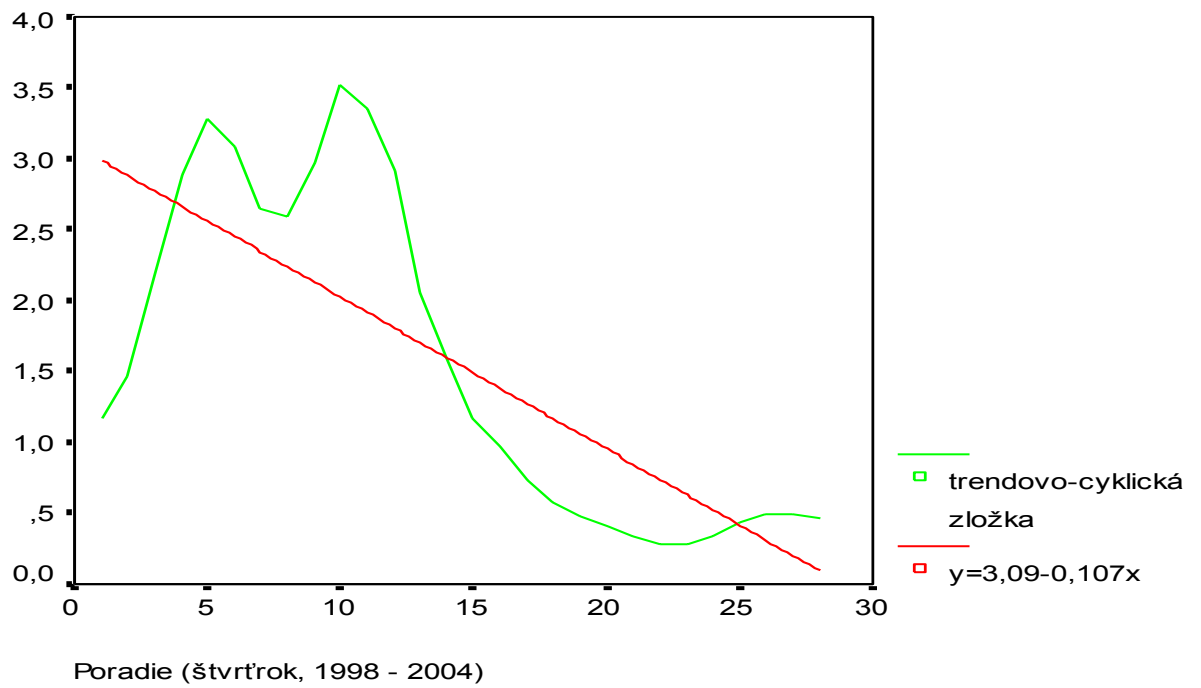
Okoč - Aszod (10,0 - 14,0 m)



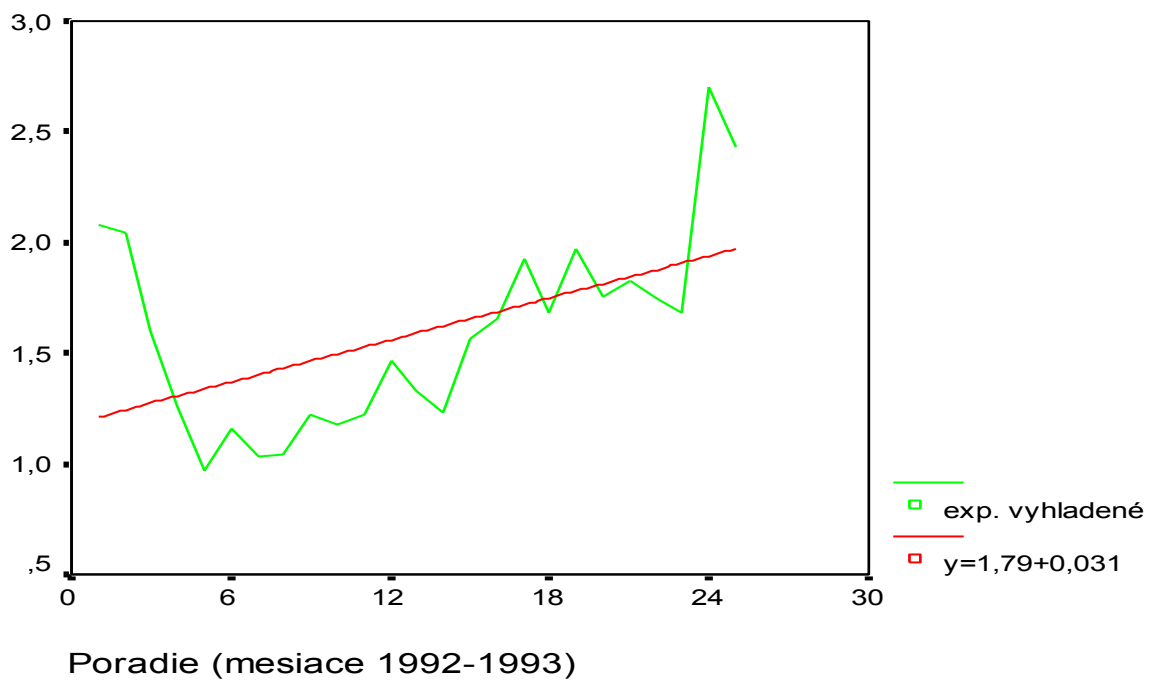
Kližská Nemá (23,0 - 25,0 m)



Kližská Nemá (4,0 - 6,0 m)

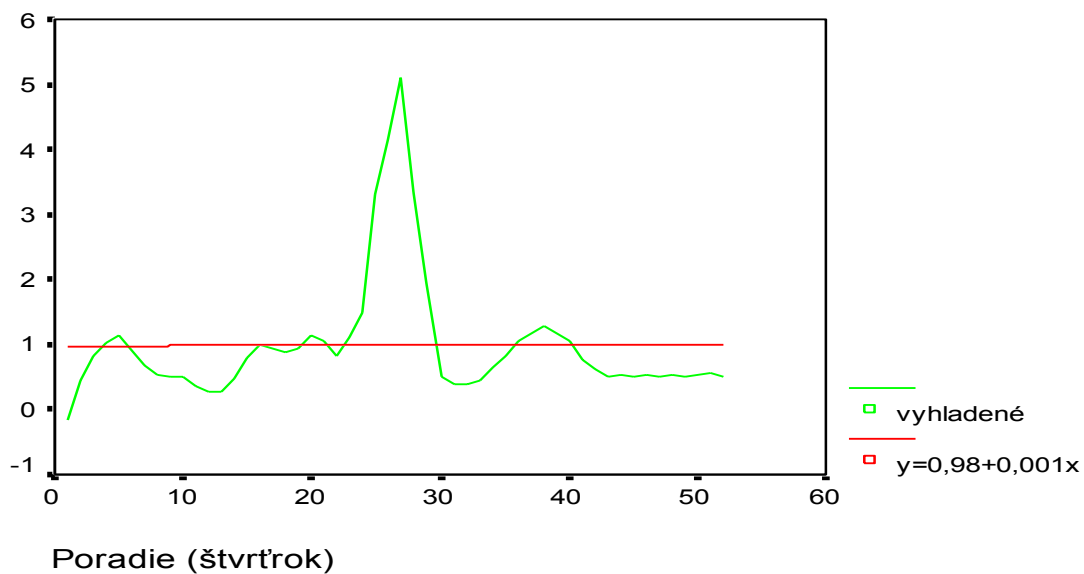


Kližská Nemá (20-23m)



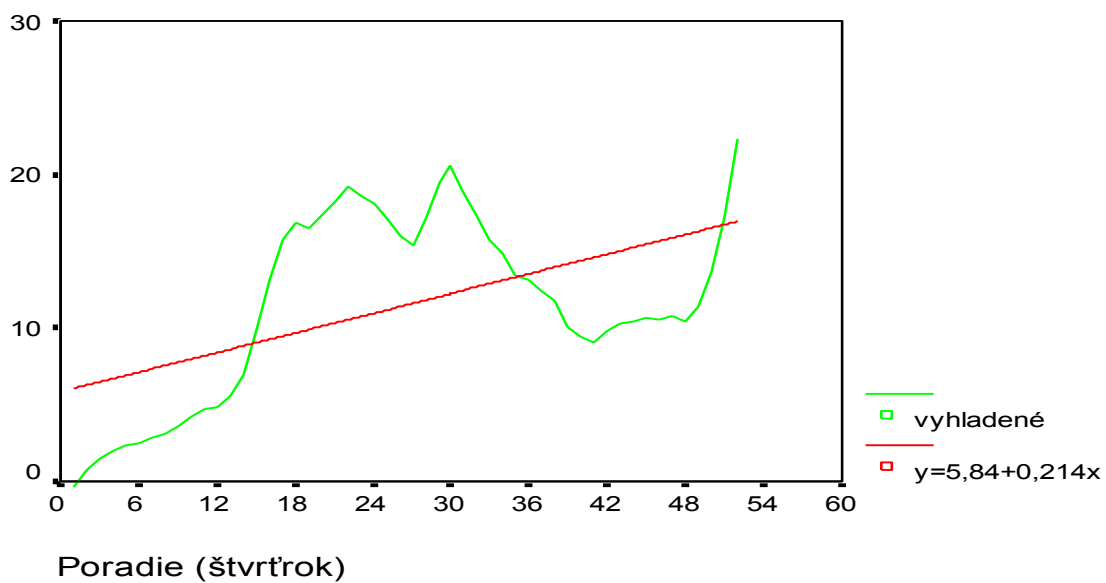
Čalovo (30-33m)

(vyhladená trendovo-cyklická zložka)

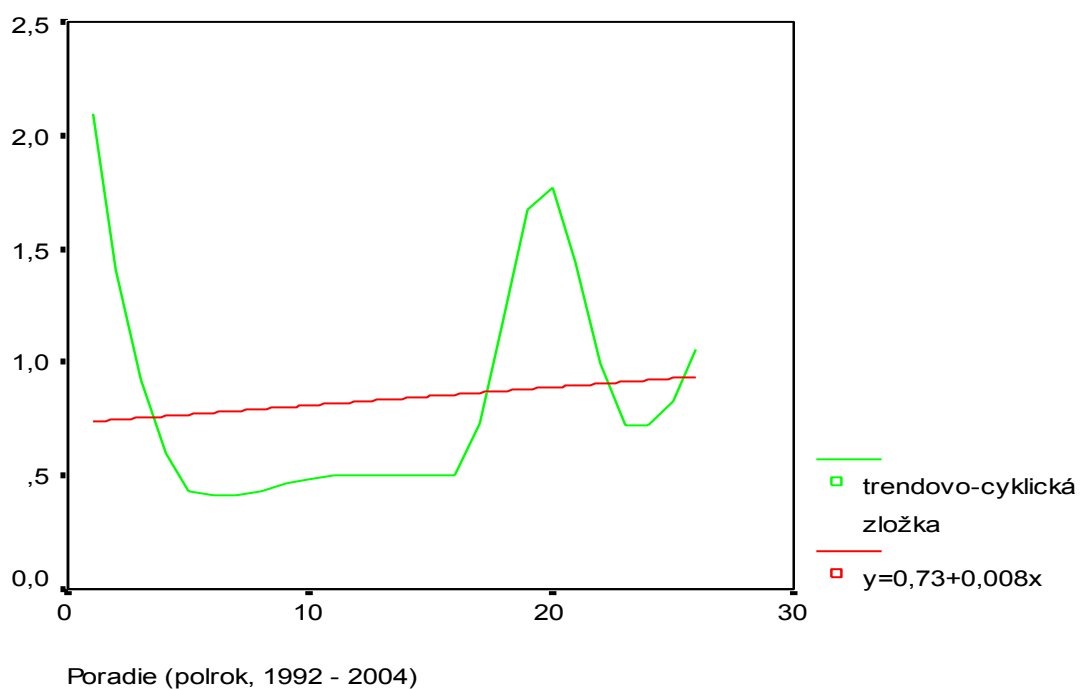


Čalovo (7,5-10,5m)

(vyhladená trendovo-cyklická zložka)



Jahodná (16,0 - 19,0 m)



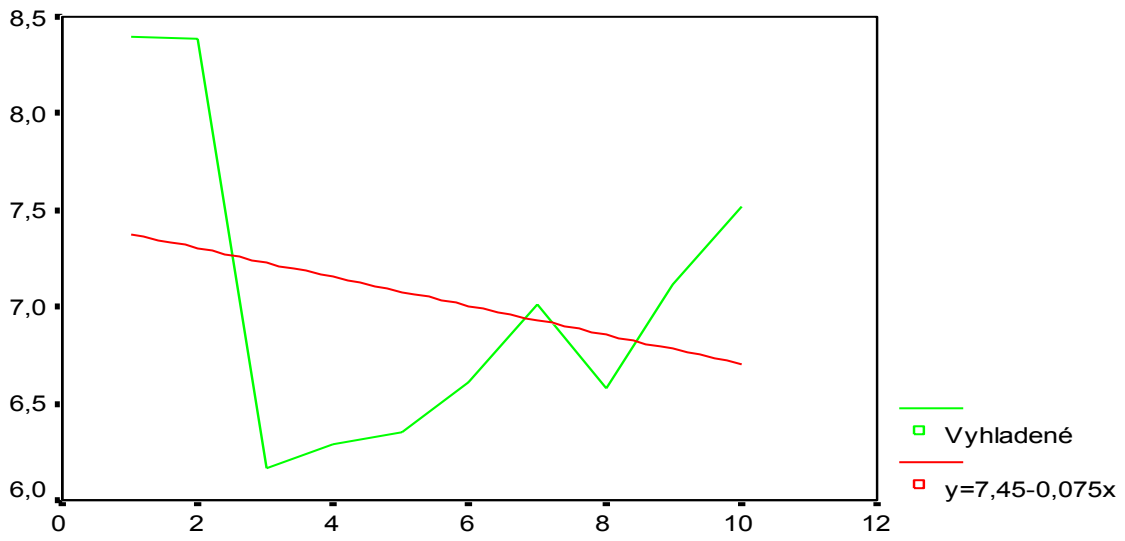
Jahodná (31-34m)

(vyhladená trendovo-cyklická zložka)



Dvorníky na Ostrove (31-34m)

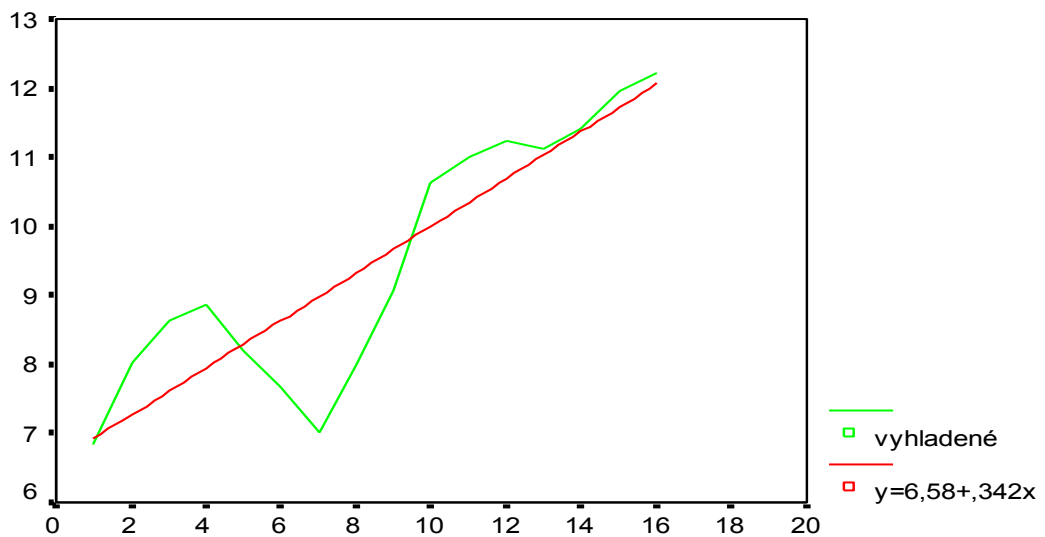
(vyhladená trendovo-cyklická zložka)



Poradie (2x ročne, 1992-1996)

Dvorníky na Ostrove (16-19m)

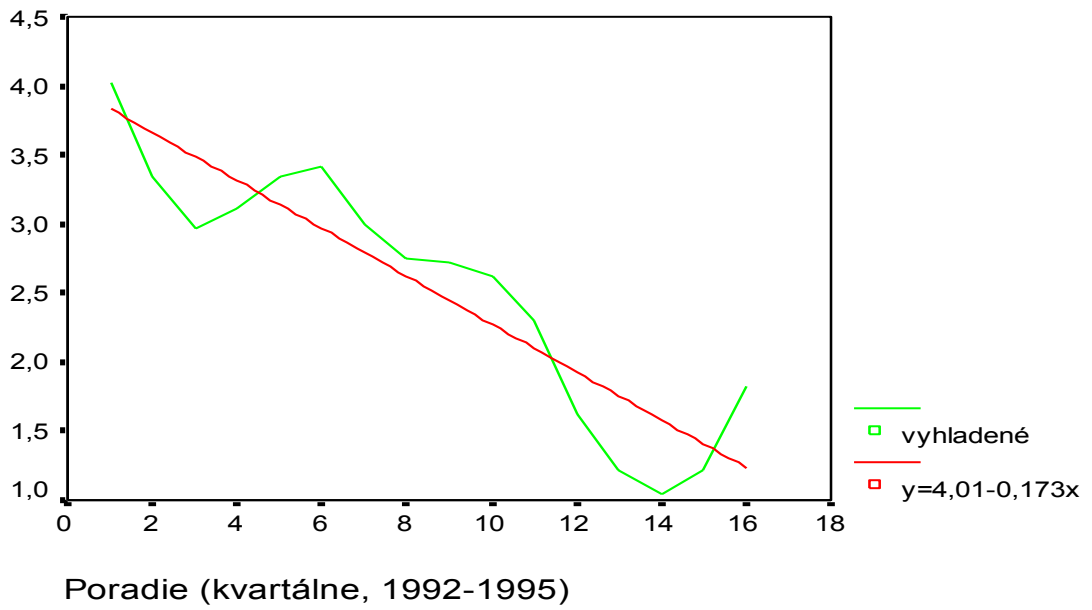
(vyhladená trendovo-cyklická zložka)



Poradie (kvartálne, 1992-1995)

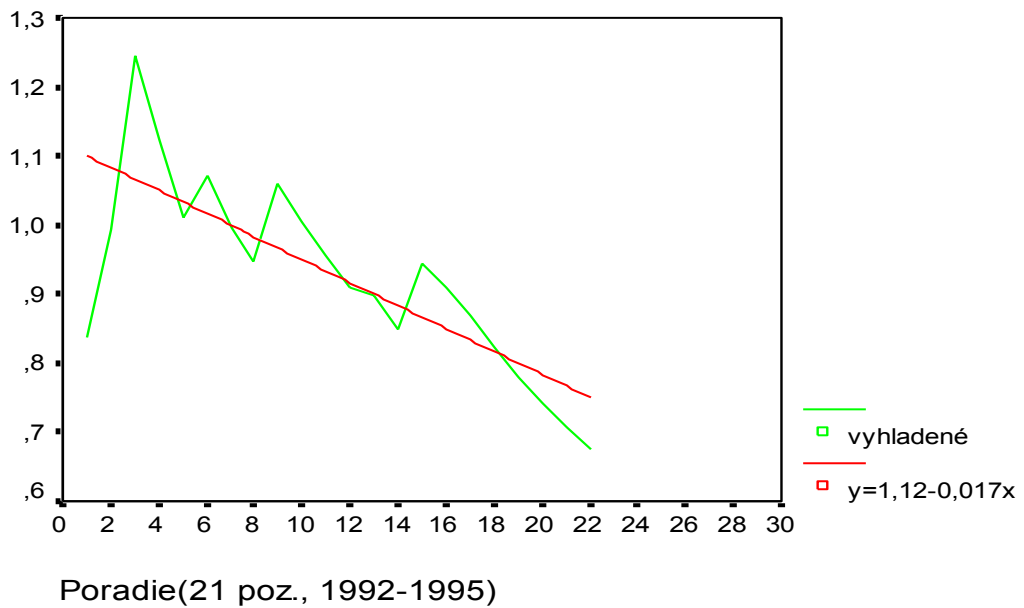
Gabčíkovo-600791 (30-33m)

(vyhladená trendovo-cyklická zložka)



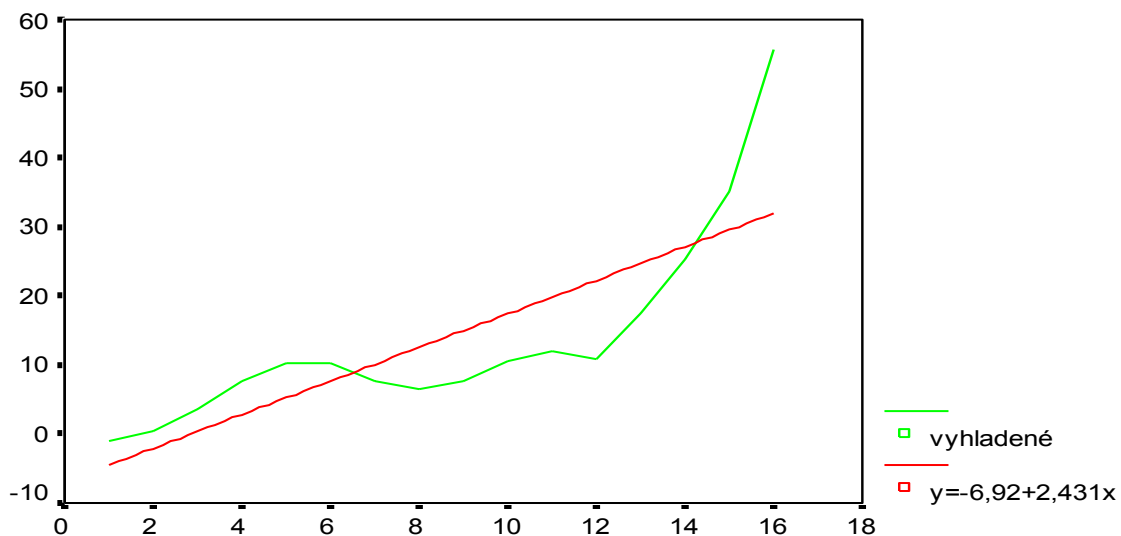
Gabčíkovo-600792(18-20m)

(exponenciálne vyhladené)



Gabčíkovo-600793 (7-9,5m)

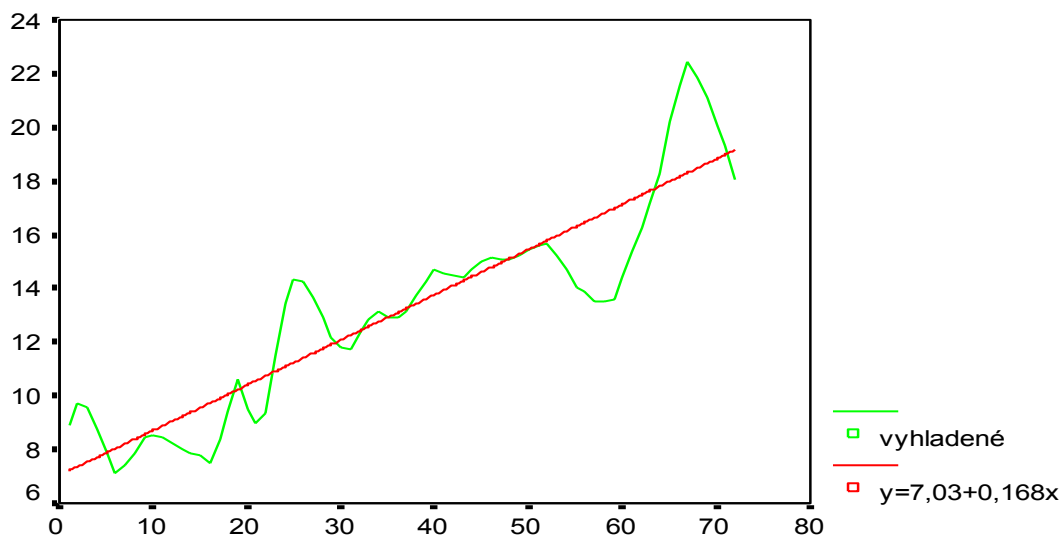
(vyhladená trendovo-cyklická zložka)



Poradie (kvartálne, 1992-1995)

Mliečany-600991 (12-15m)

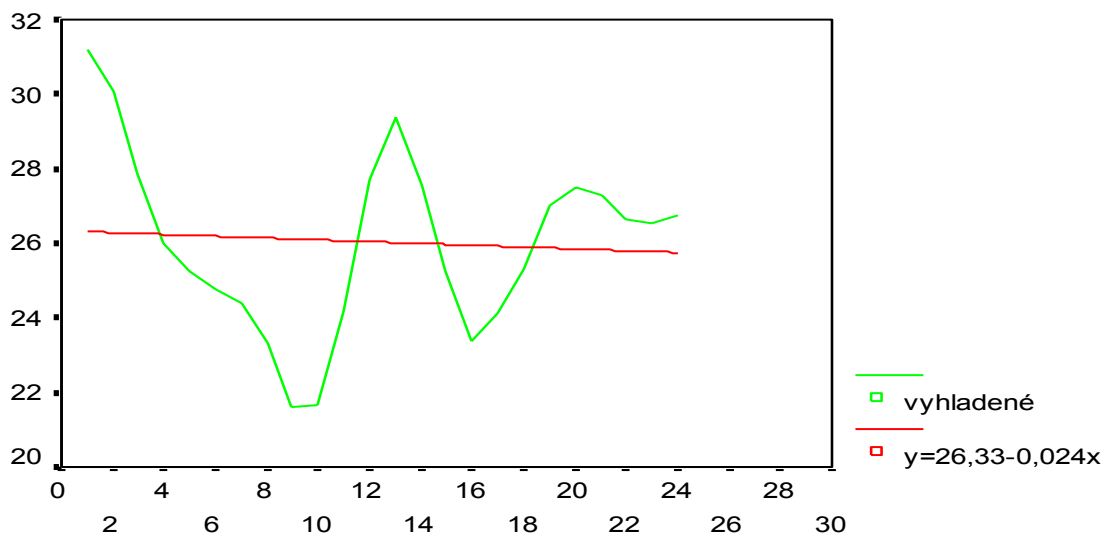
(vyhladená trendovo-cyklická zložka)



Poradie (ročne, 1992-1997)

Mliečany-600992 (3-5m)

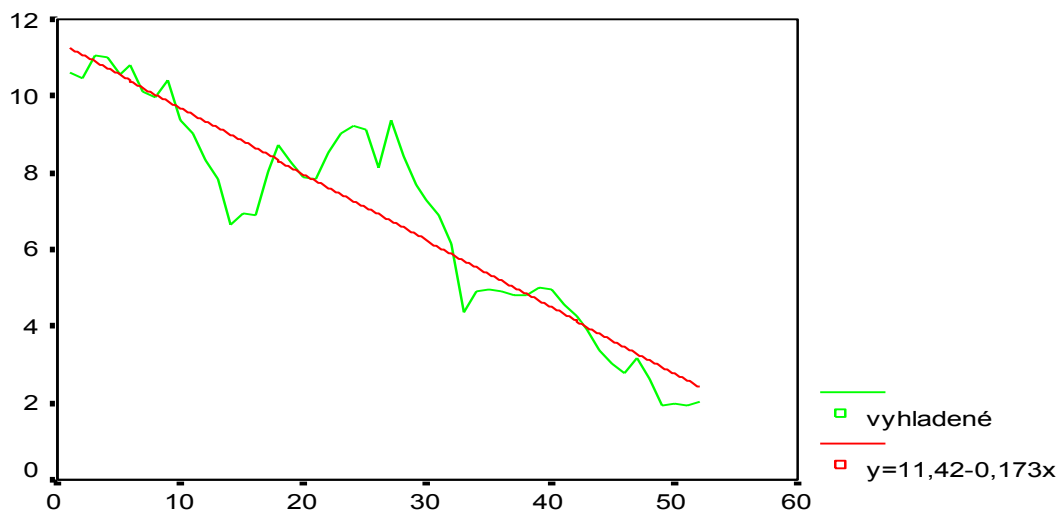
(vyhladená trendovo-cyklická zložka)



Poradie (štvrtrok, 1992-1997)

Dobrohošť-601092 (78-80m)

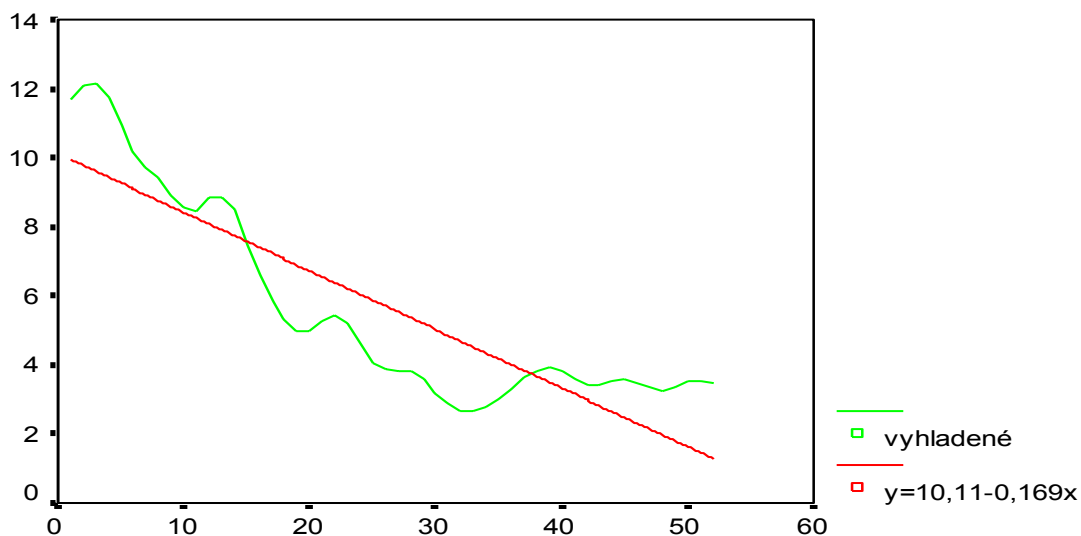
(exp. vyhladené)



Poradie (štvrtrok, 1992-2004)

Gabčíkovo-601095 (20-20,5m)

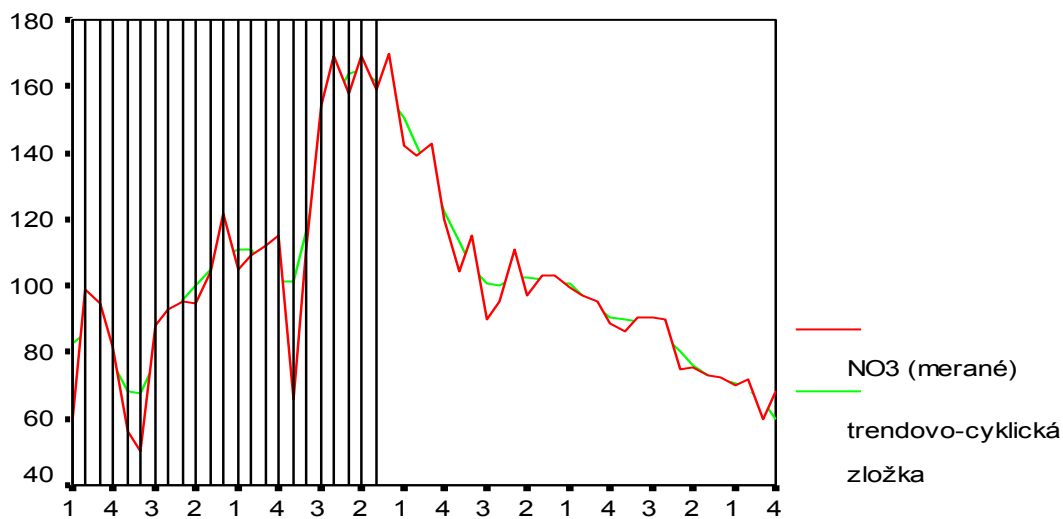
(vyhladená trendovo-cyklická zložka)



Poradie (štvrtrok, 1992-2004)

Oldza (61-67m)

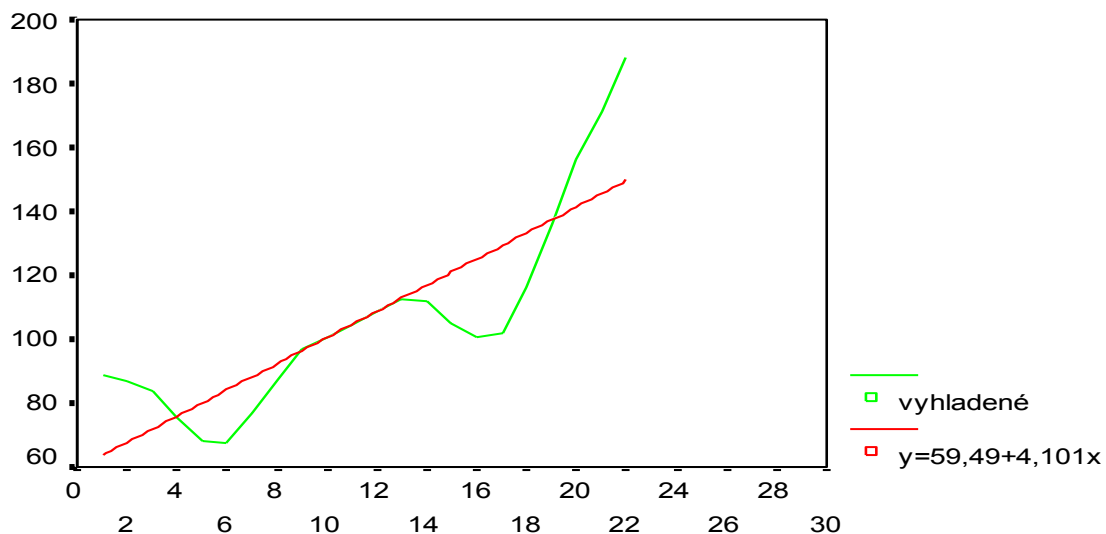
(hodnotenie trendu)



Poradie (štvrtrok 1992-2004)

Oldza (61-67m)

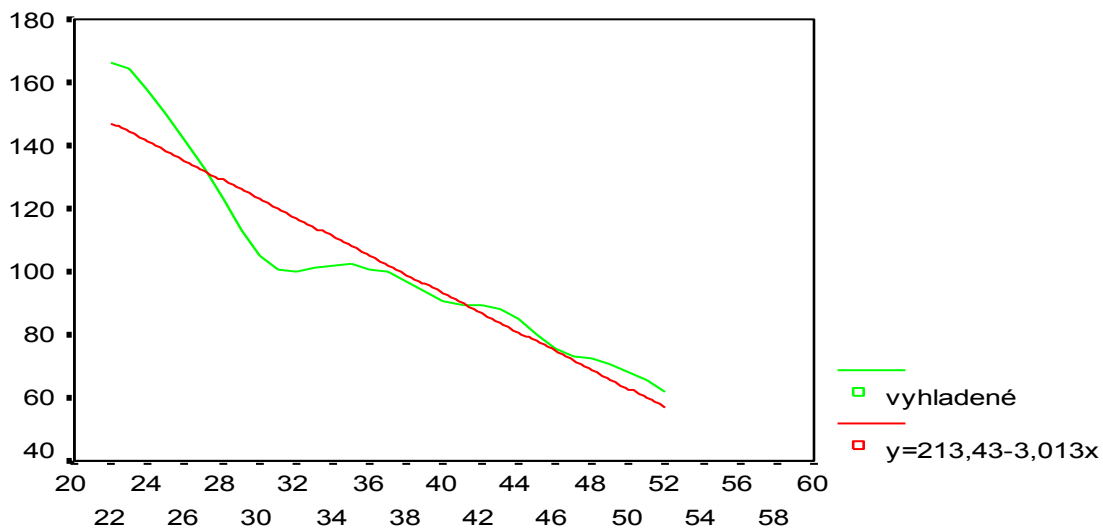
(vyhladená trendovo-cyklická zložka)



Poradie (štvrtrok, 1992-1997)

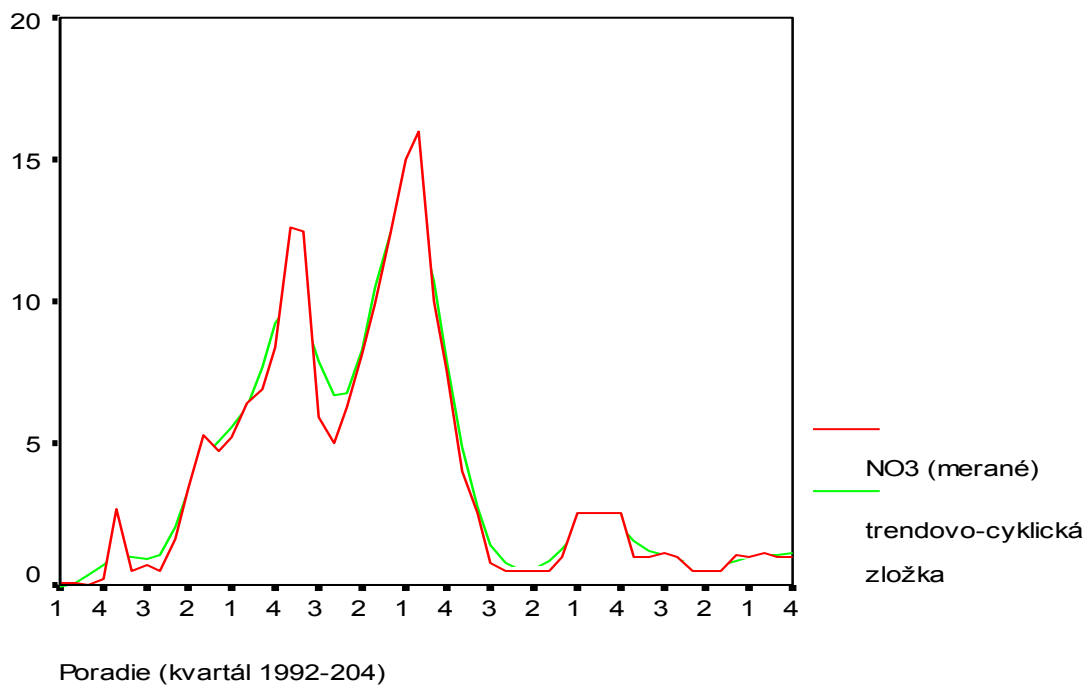
Oldza (61-67m)

(vyhladená trendovo-cyklická zložka)

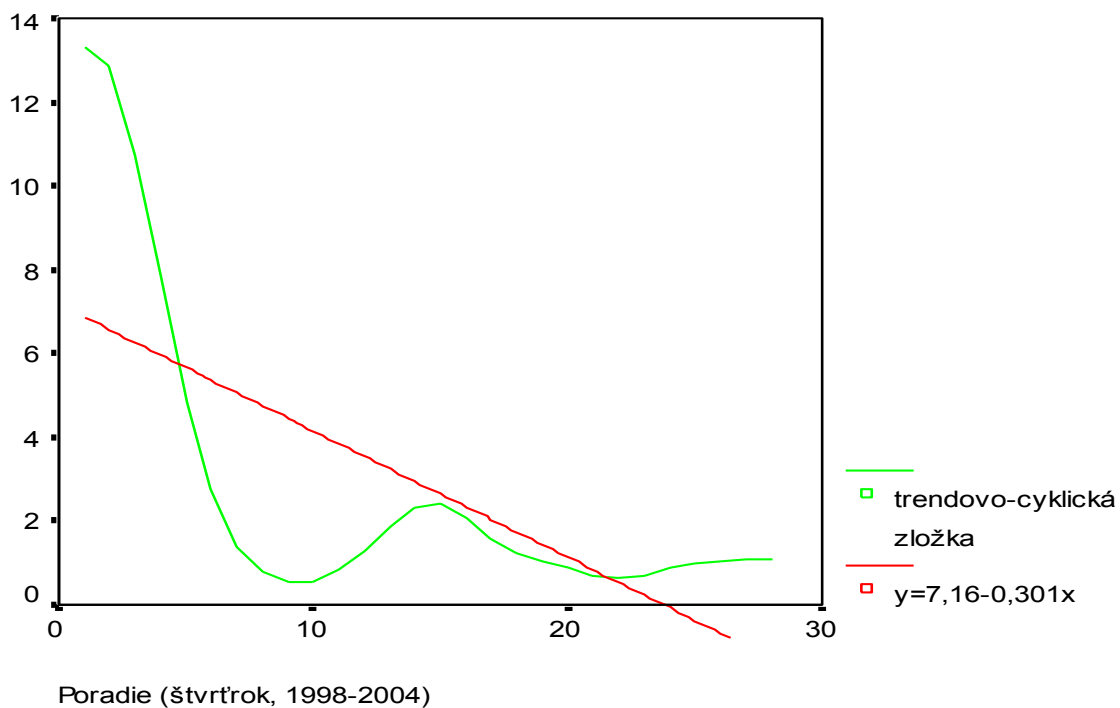


Poradie (štvrtrok, 1997-2004)

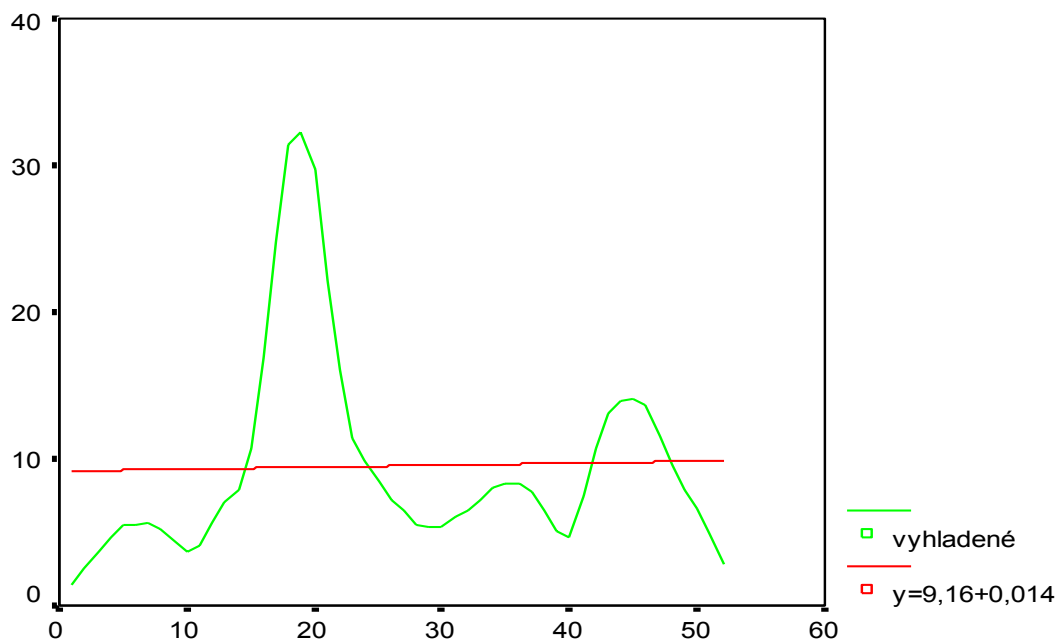
VIky (27,5 - 29,5 m)



VIky (27,5 - 29,5m)

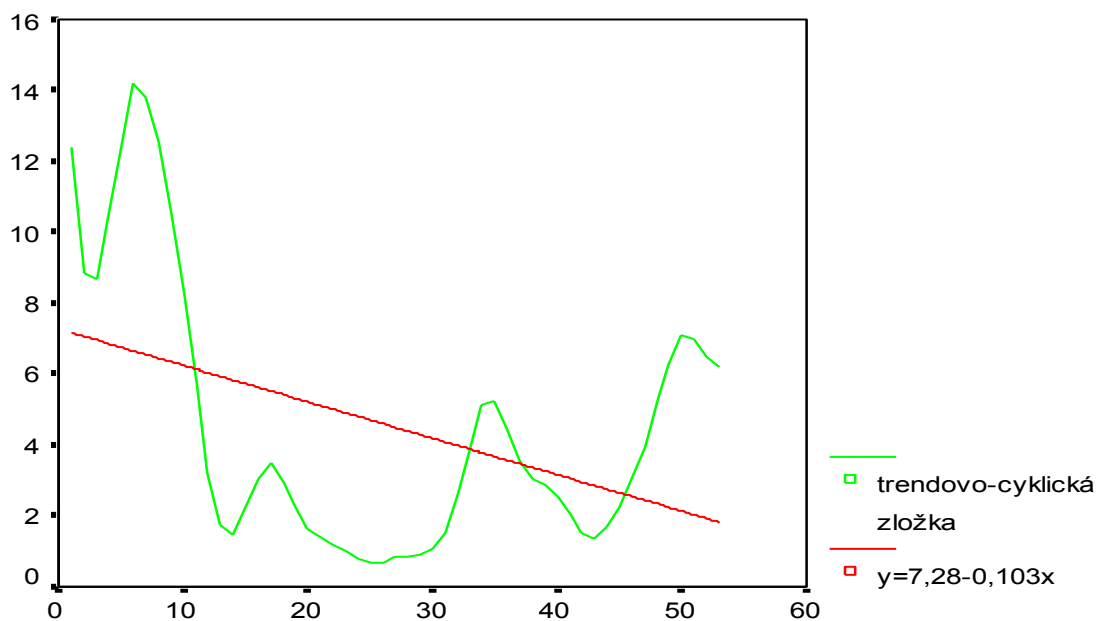


Vlky (7,5 - 9,0 m)



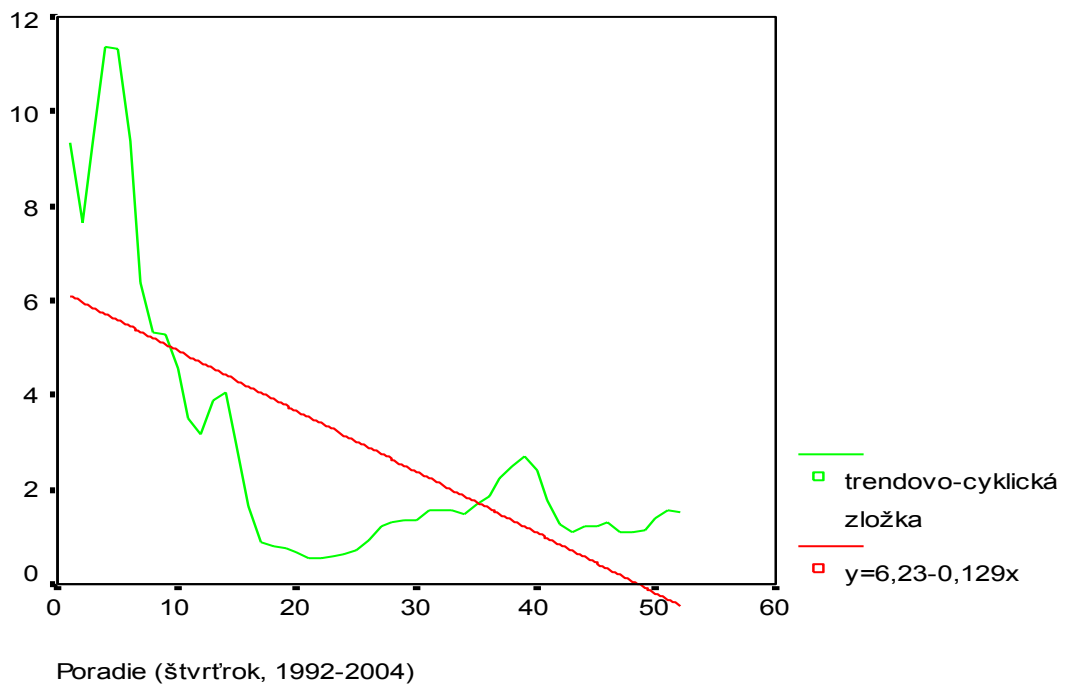
Poradie (kvartál 1992-2004)

Kalinkovo (40,0-45,0m)

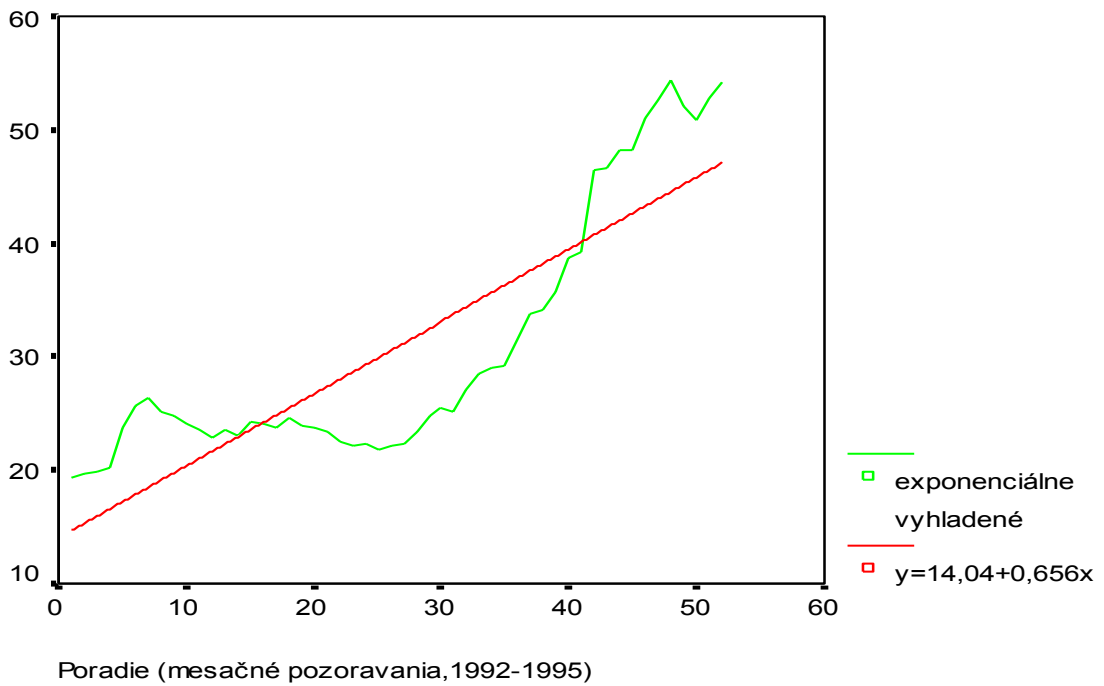


Poradie (štvrtrok, 1992-2004)

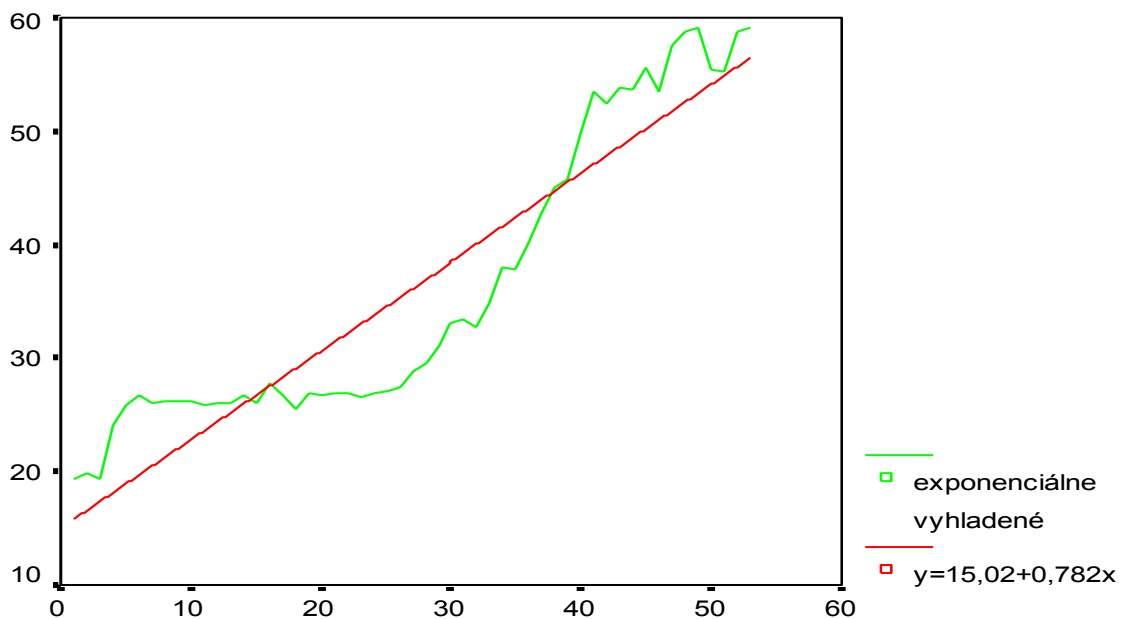
Kalinkovo (8,0-13,0m)



Most pri Bratislave (31 - 33m)

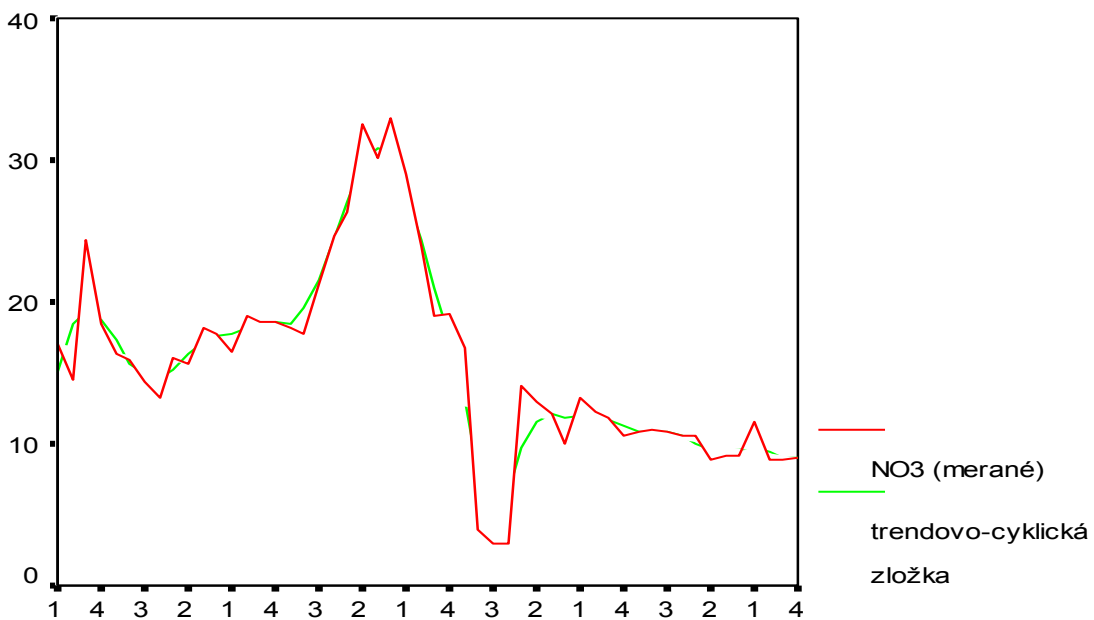


Most pri Bratislave (16,5 - 17,0m)



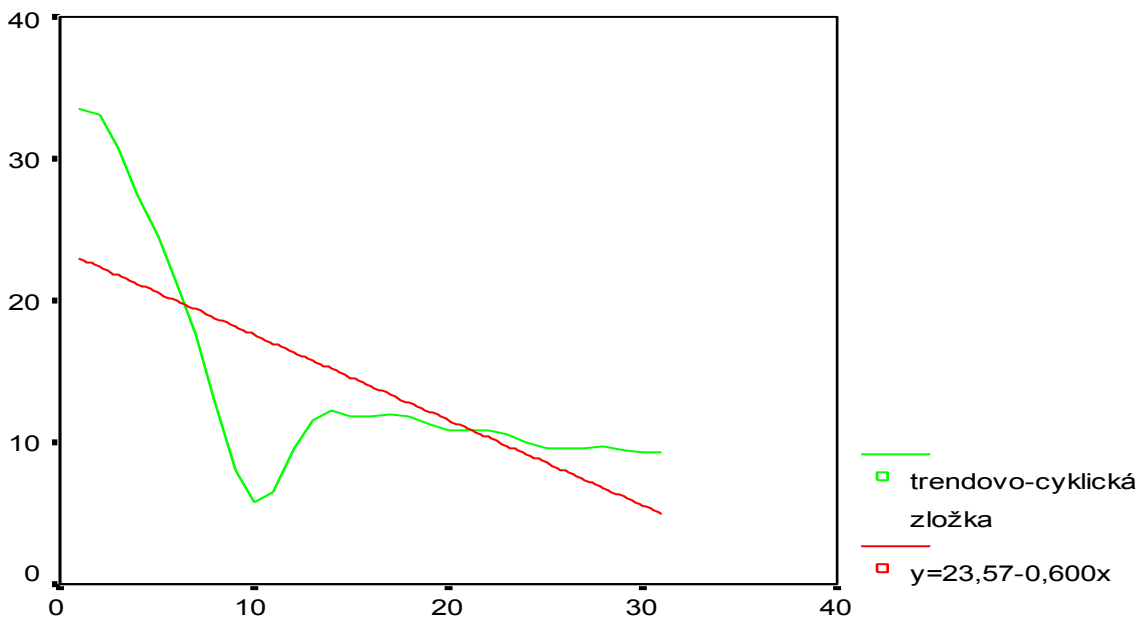
Poradie (mesačné pozorovania, 1992-1995)

Pod. Biskupice - Nové Košariská (26 - 28m)



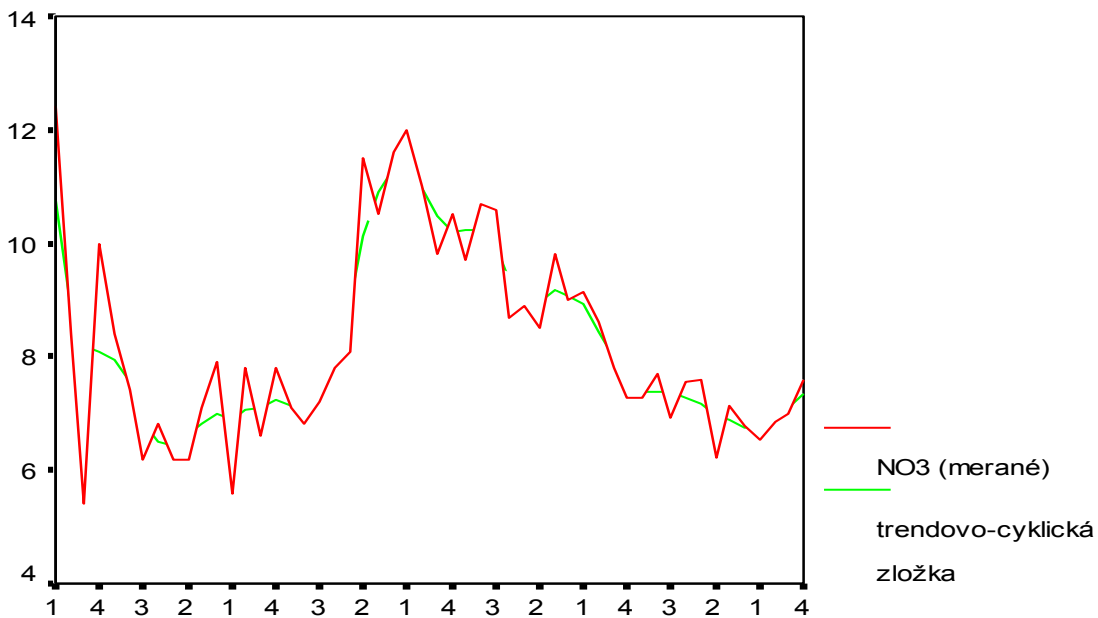
Poradie (štvrtrok, 1992-2004)

Pod. Biskupice - Nové Košariská (26 - 28m)



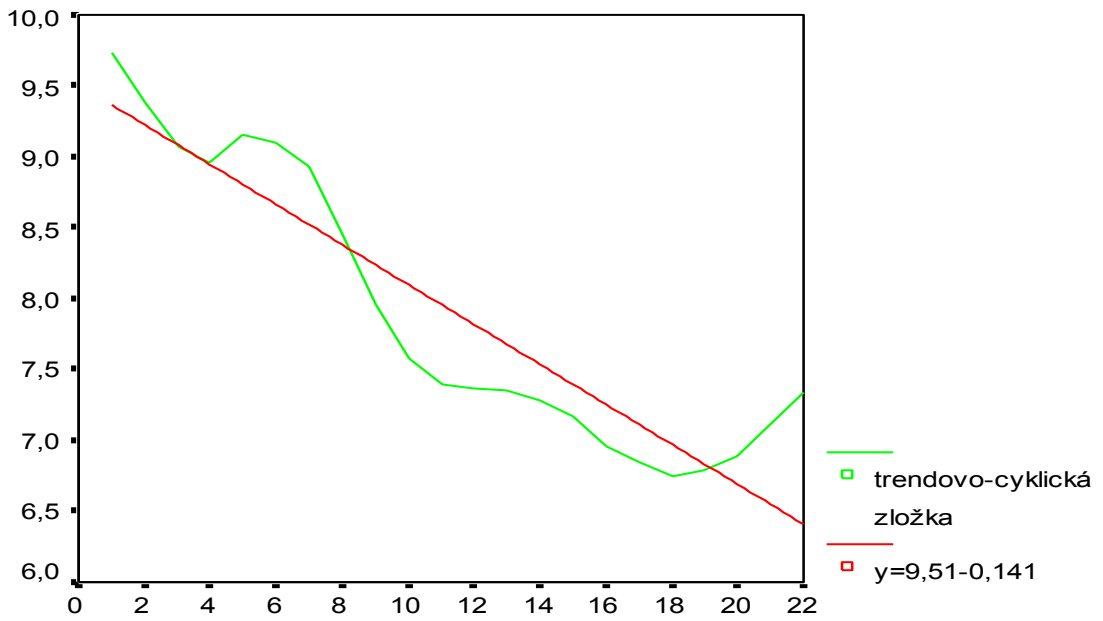
Poradie (štvrtrok, 1997-2004)

Pod. Biskupice - Nové Košariská (40,0 - 42,0 m)



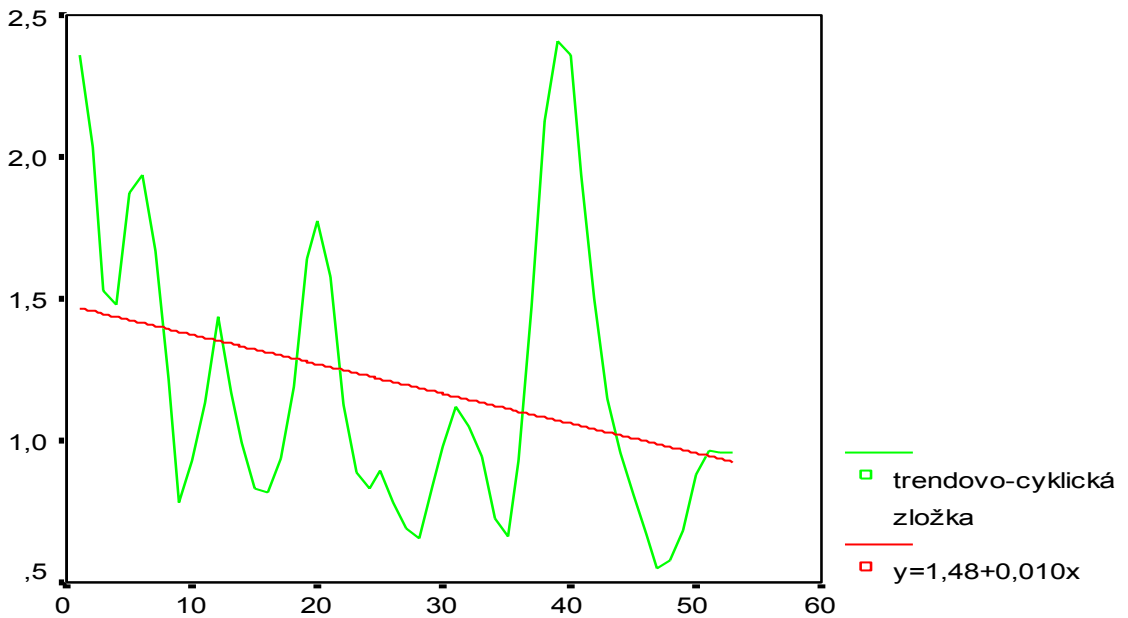
Poradie (štvrtrok, 1992-2004)

Pod. Biskupice - Nové Košariská (40,0 - 42,0 m)



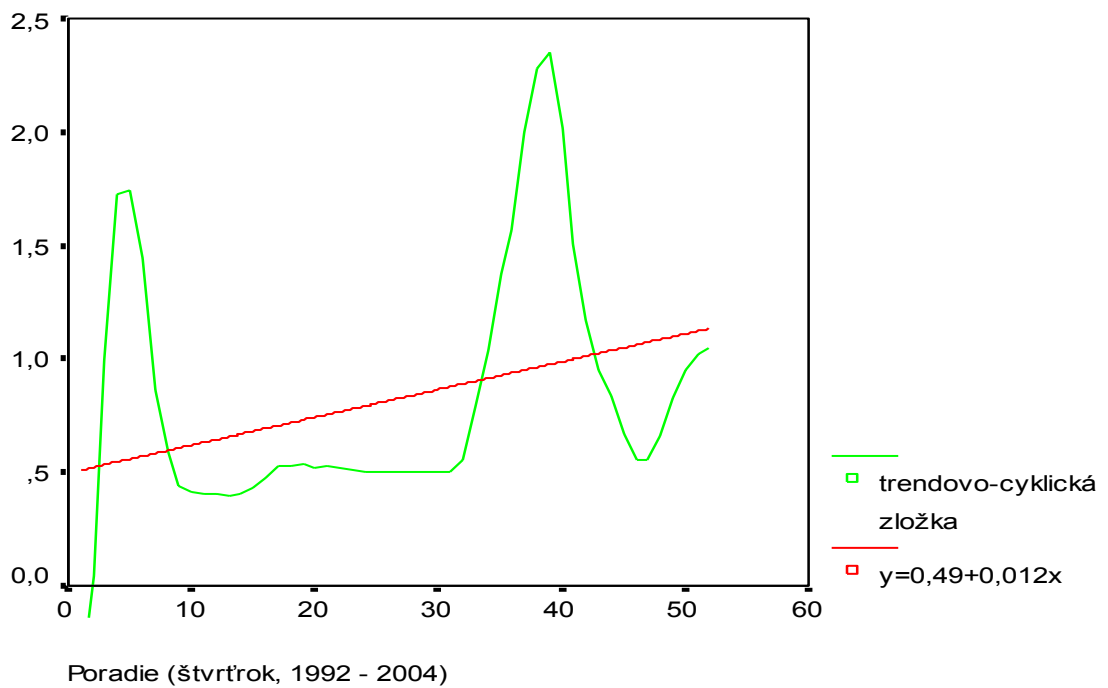
Poradie (štvrtrok, 1999 - 2004)

Rovinka (40,0 - 55,0 m)

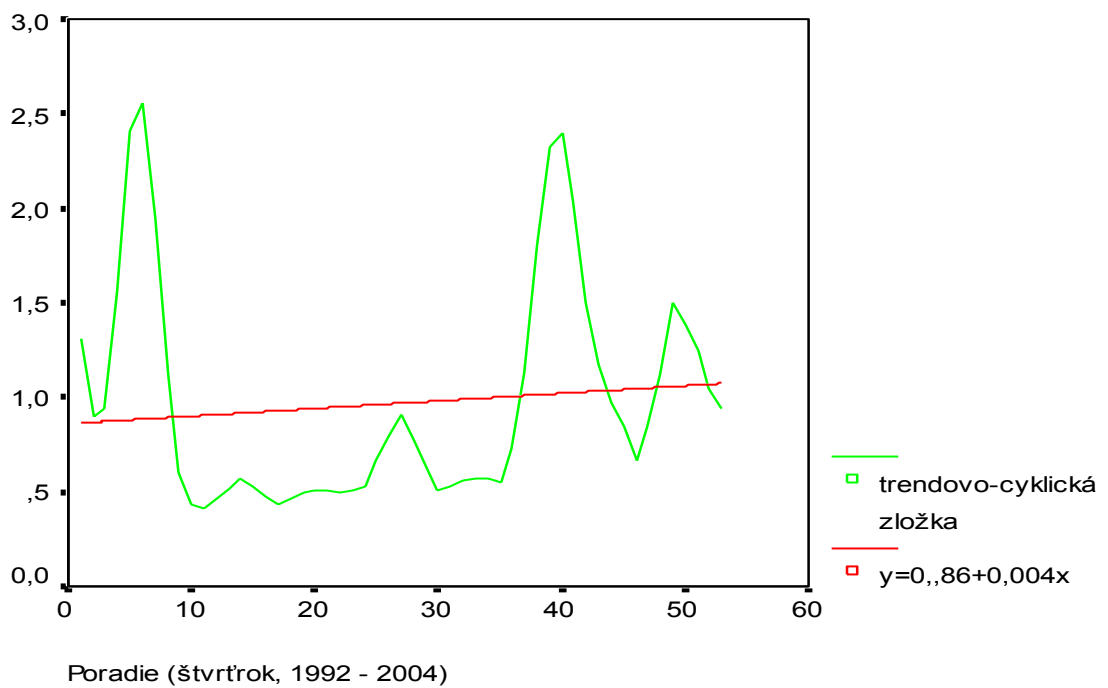


Poradie (štvrtrok, 1992 - 2004)

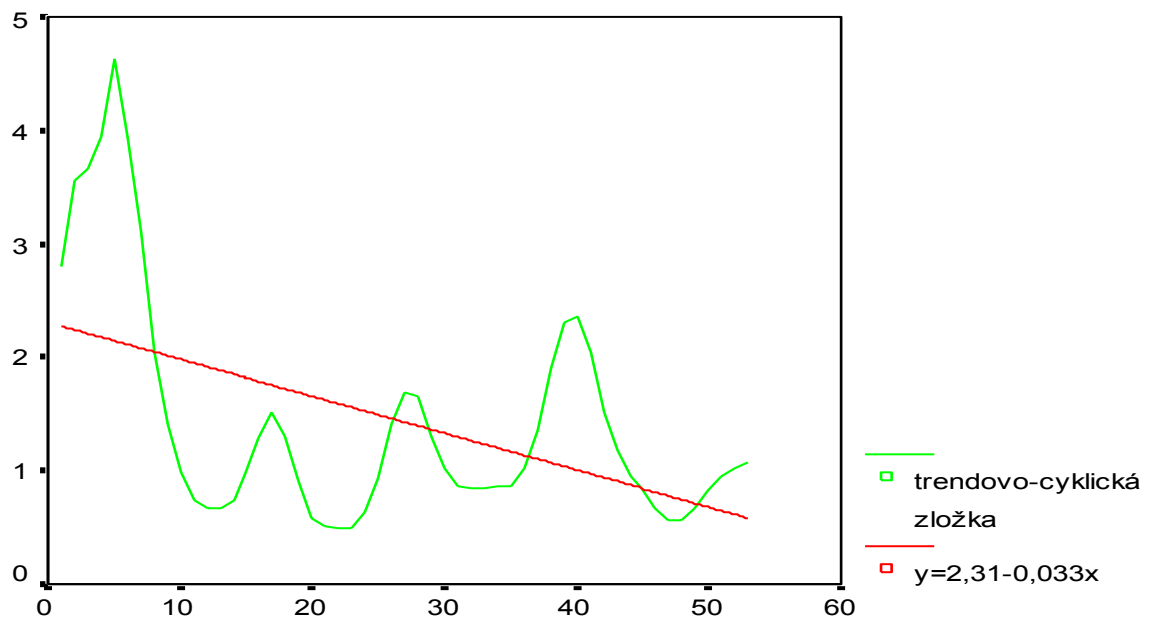
Rovinka (28,0 - 29,0 m)



Jarovce (15,0 - 17,0 m)

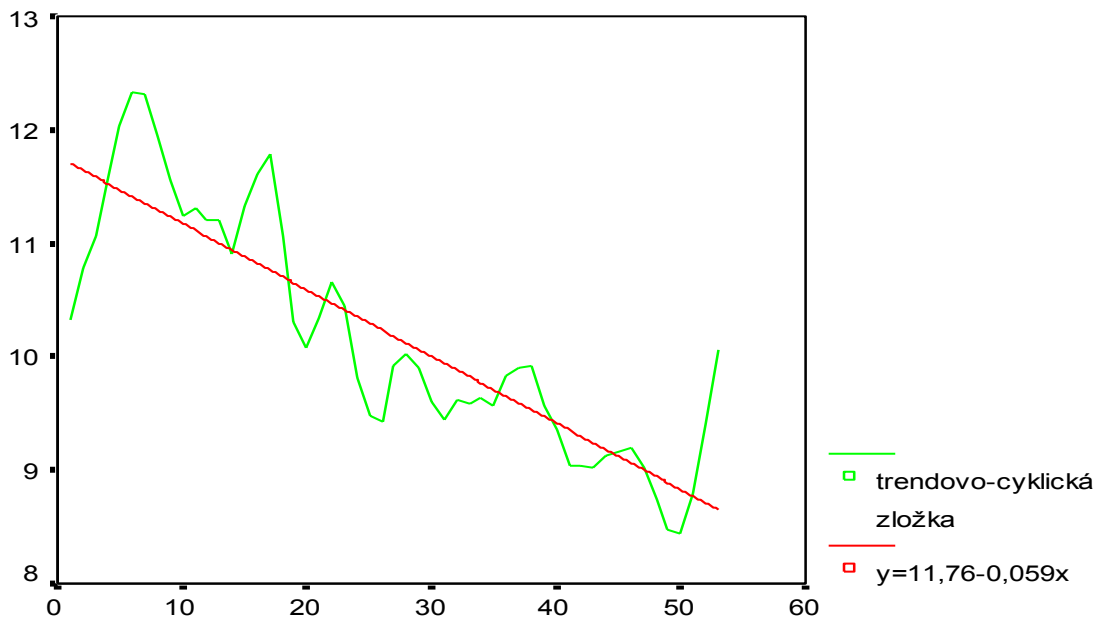


Jarovce (8,0 - 10,0 m)



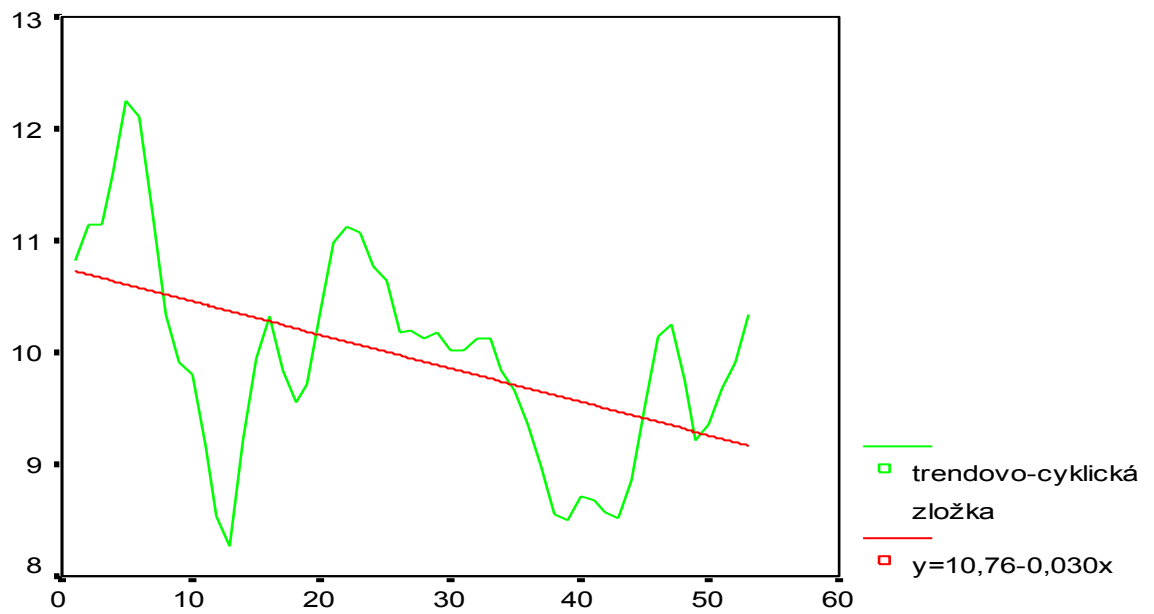
Poradie (štvrtrok, 1992 - 2004)

Rusovce (42,0 - 44,0 m)



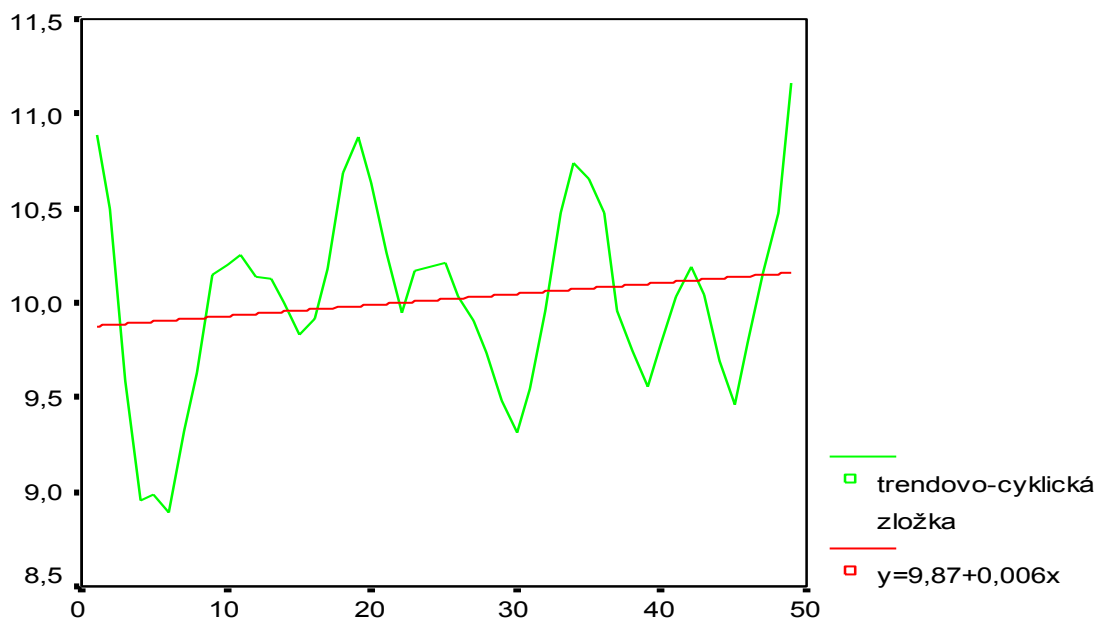
Poradie (štvrtrok, 1992 - 2004)

Rusovce (8,0 - 10,0 m)



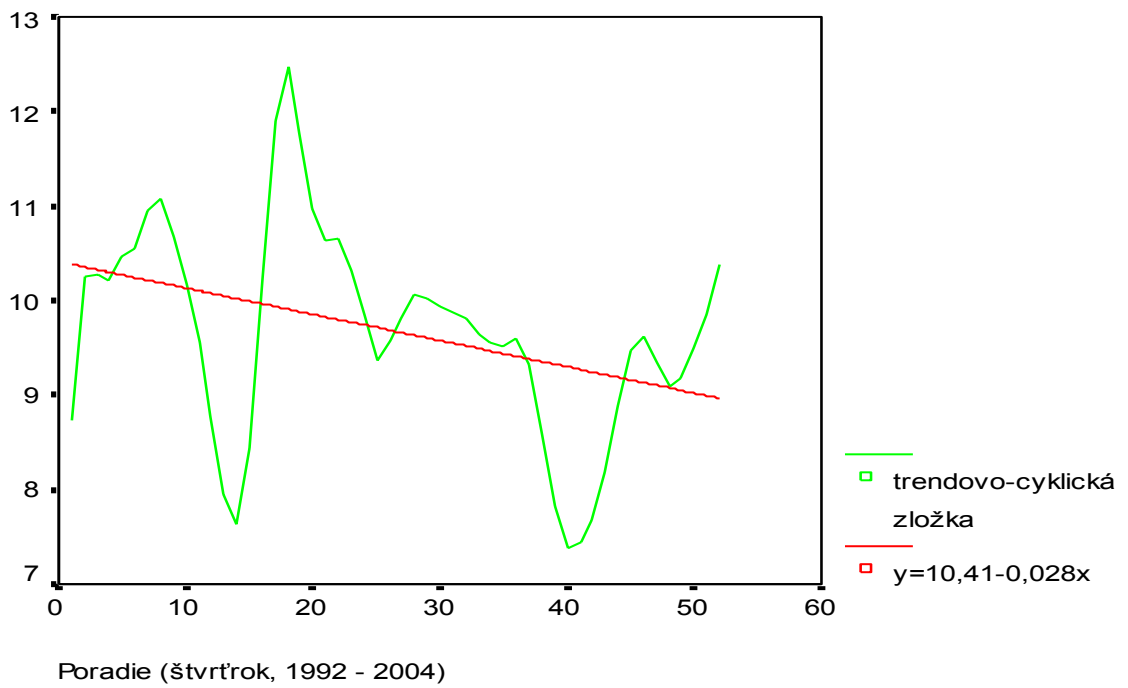
Poradie (štvrťrok, 1992 - 2004)

Rusovce-602991 (42 - 44m)

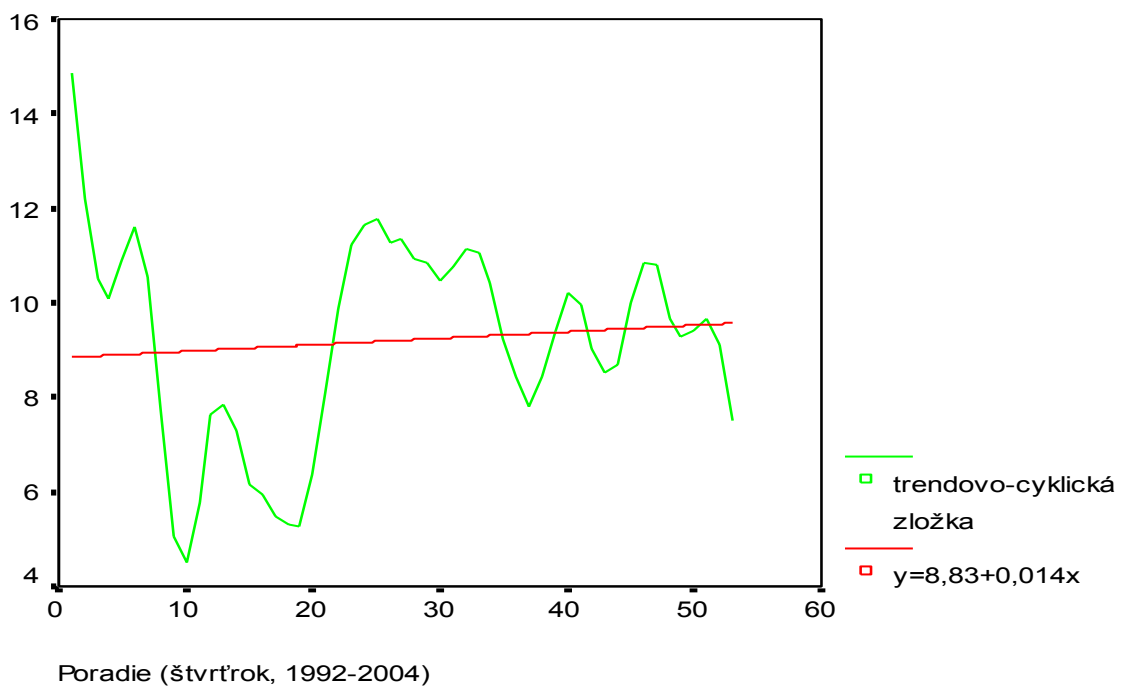


Poradie (štvrťrok, 1992-2004)

Rusovce - 602993 (8 - 10 m)



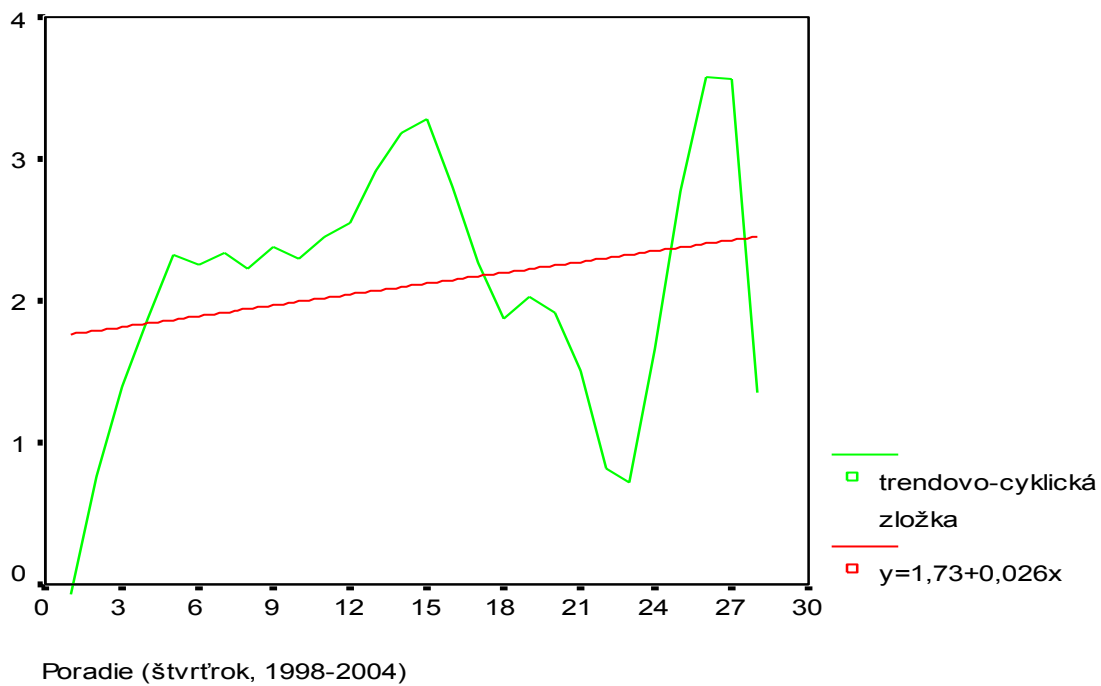
Čunovo (35,0 - 37,0 m)



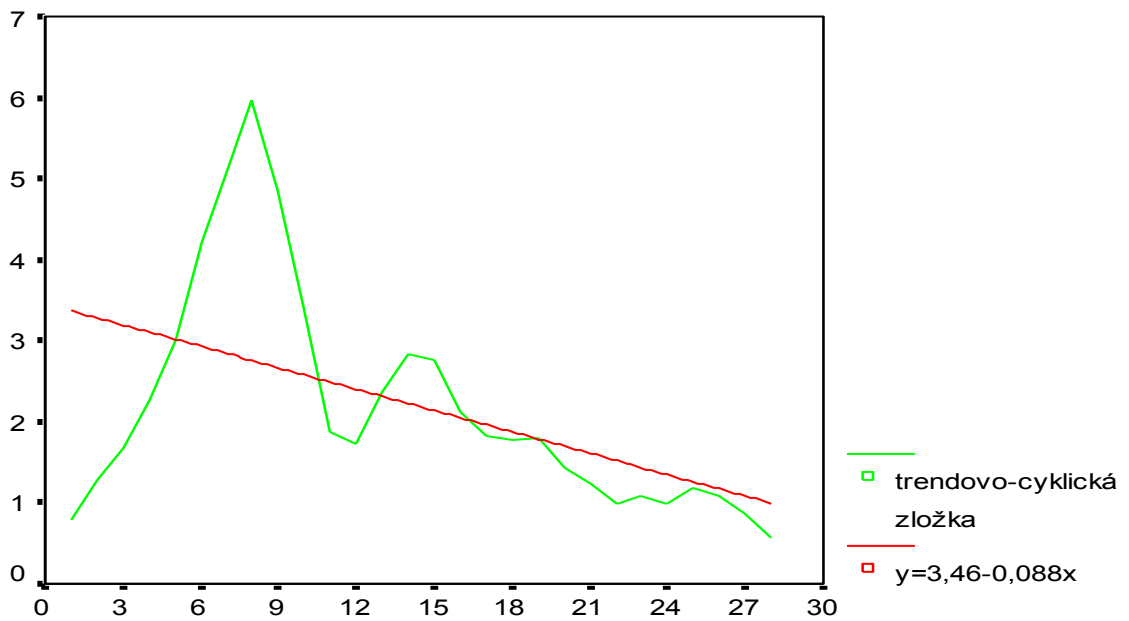
Čunovo (8,0 - 10,0 m)



Gabčíkovo (20,0-24,0 m)

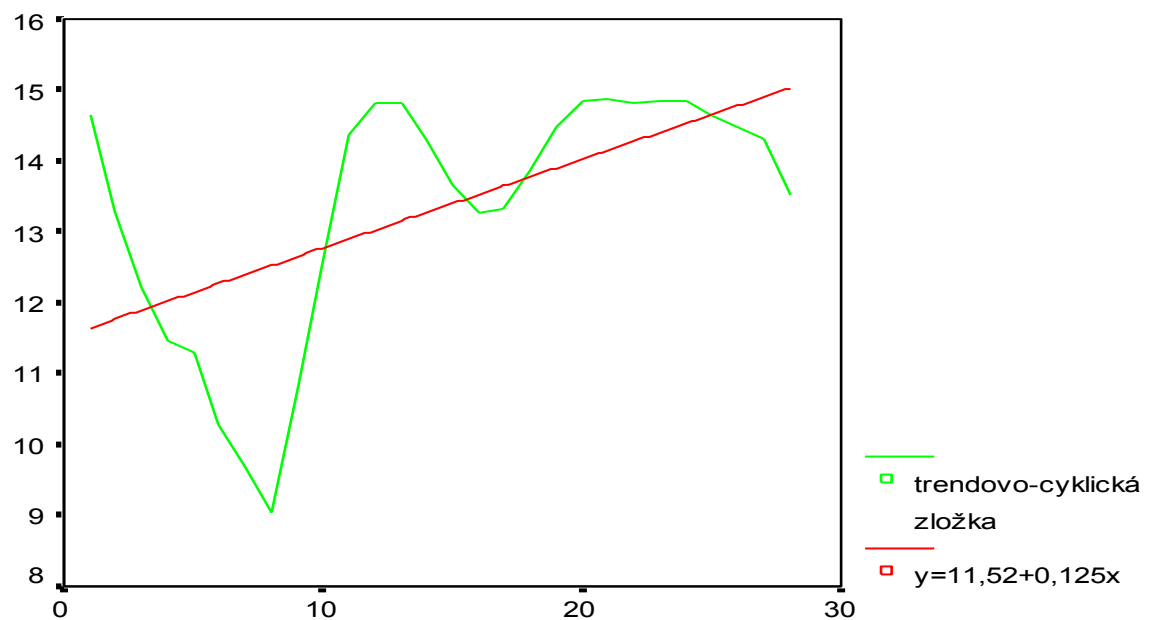


Gabčíkovo (10,0 - 14,0 m)



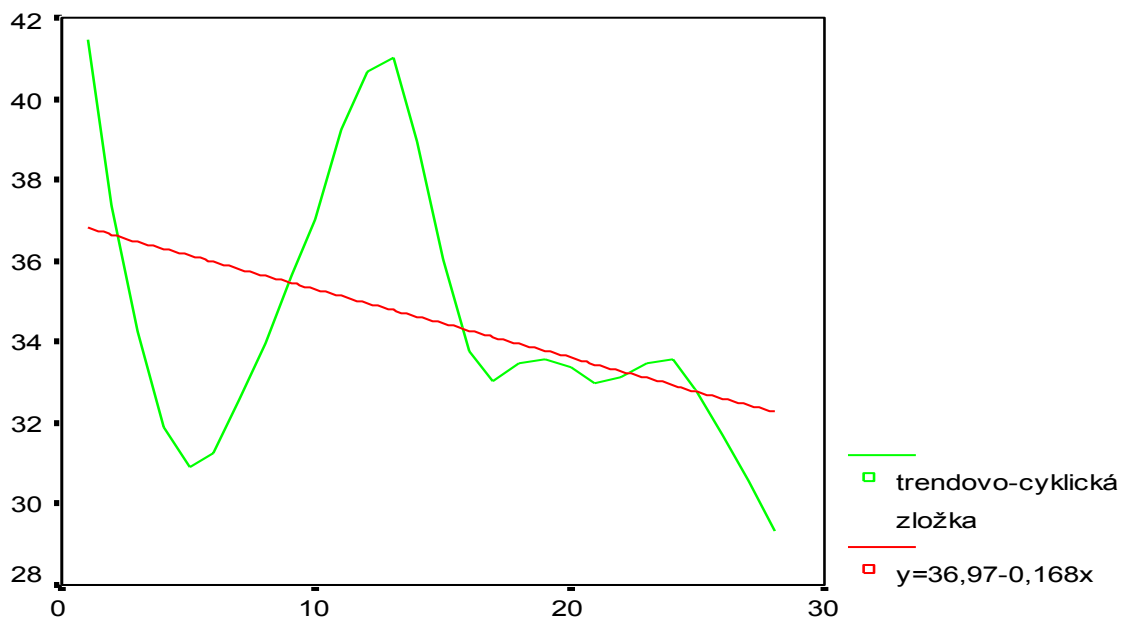
Poradie (štvrtrok, 1998-2004)

Mliečany (20,0 - 24,0 m)



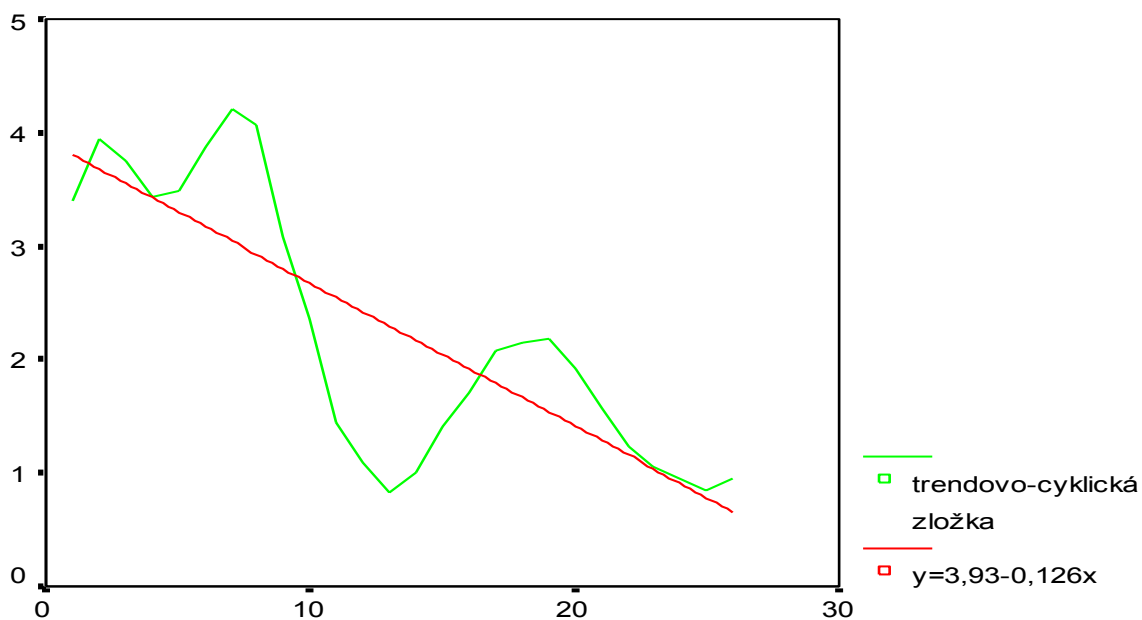
Poradie (štvrtrok, 1998-2004)

Mliečany (10,0 - 14,0 m)



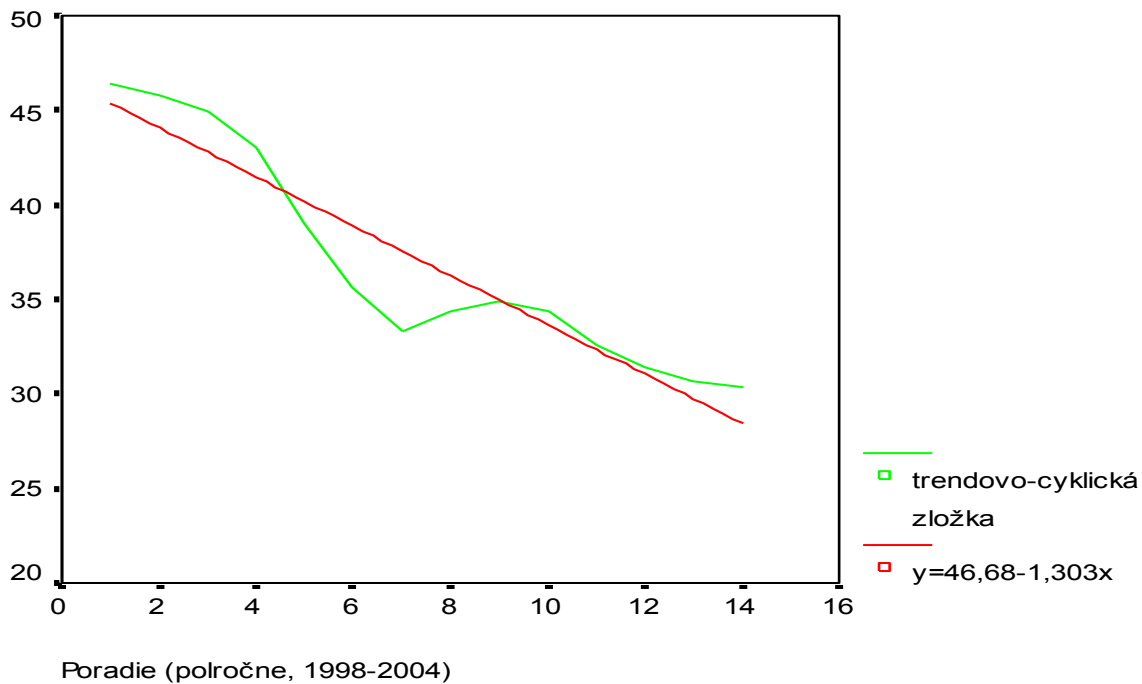
Poradie (štvrtrok, 1998-2004)

Čalovec-Kameničná (8,5 - 9,5 m)



Poradie (polročne, 1992-2004)

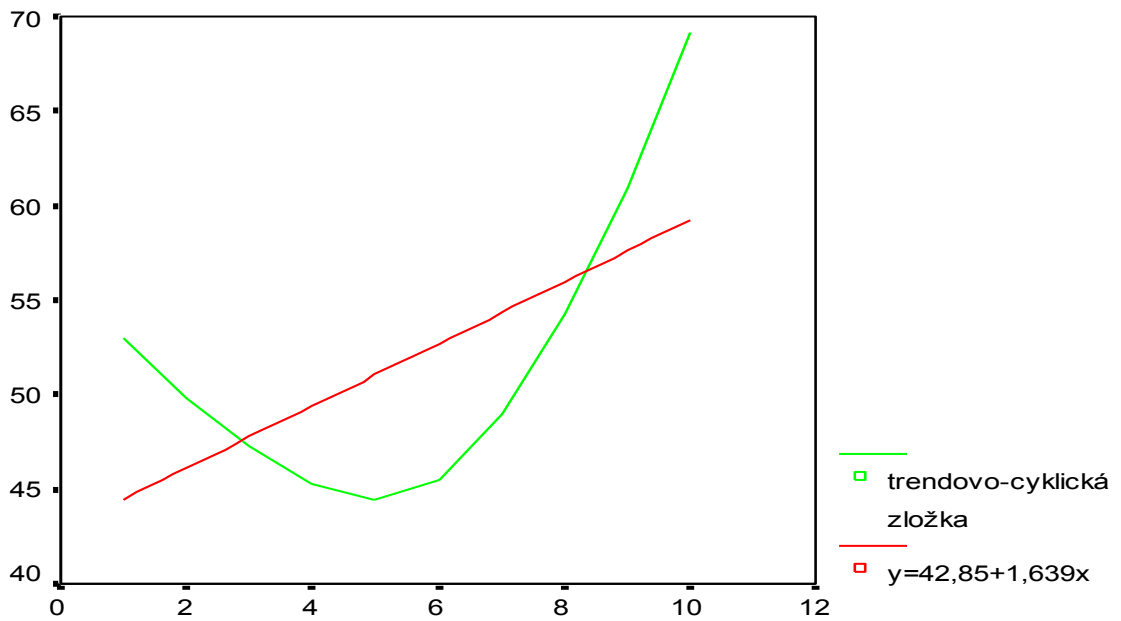
Podunajské Biskupice (19,0 - 23,0 m)



Slovnaft (11,5 - 16,0 m)

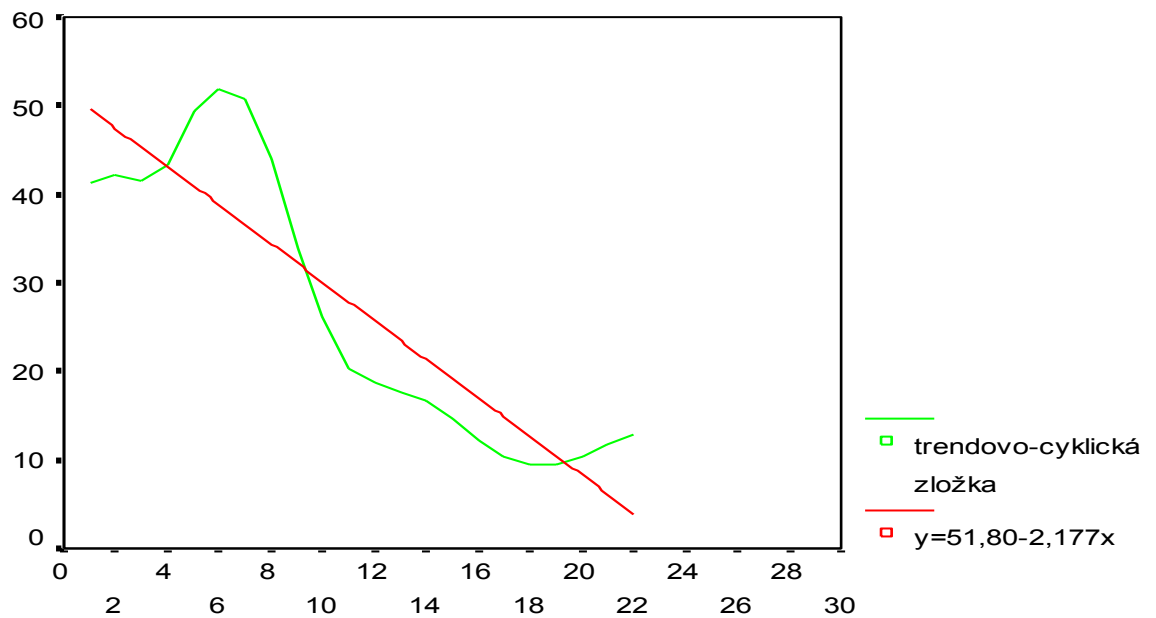


Podunajské Biskupice (21,0 - 23,0 m)



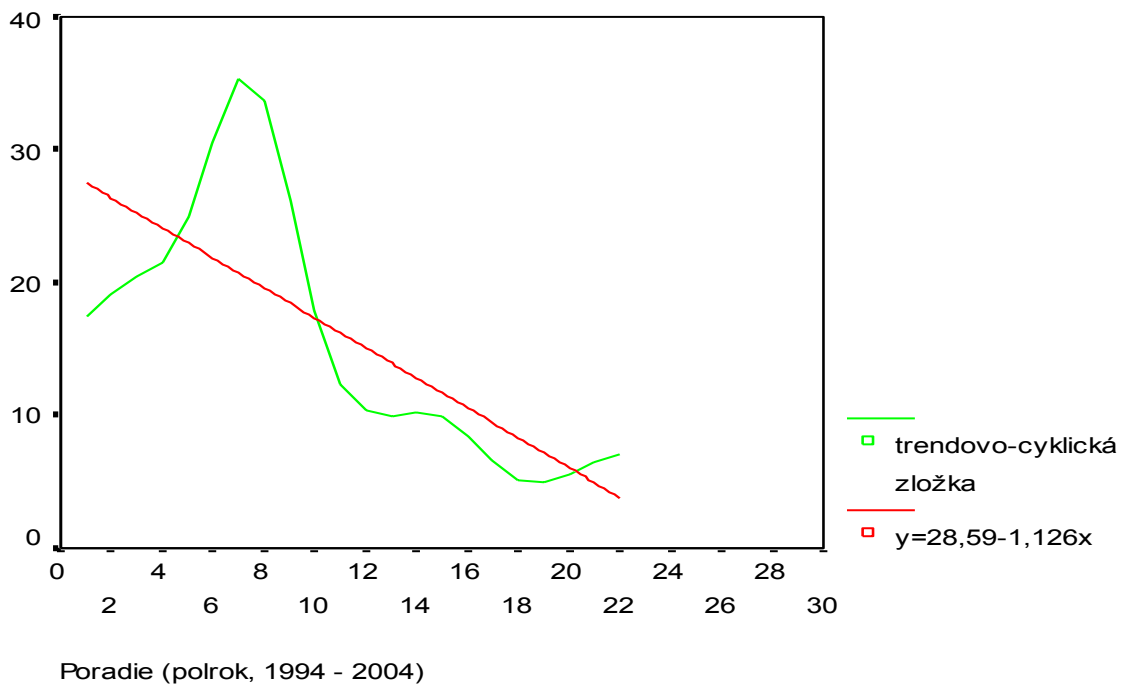
Poradie (polrok, 1993 - 1997)

Malinovo (5,0 - 10,0 m)

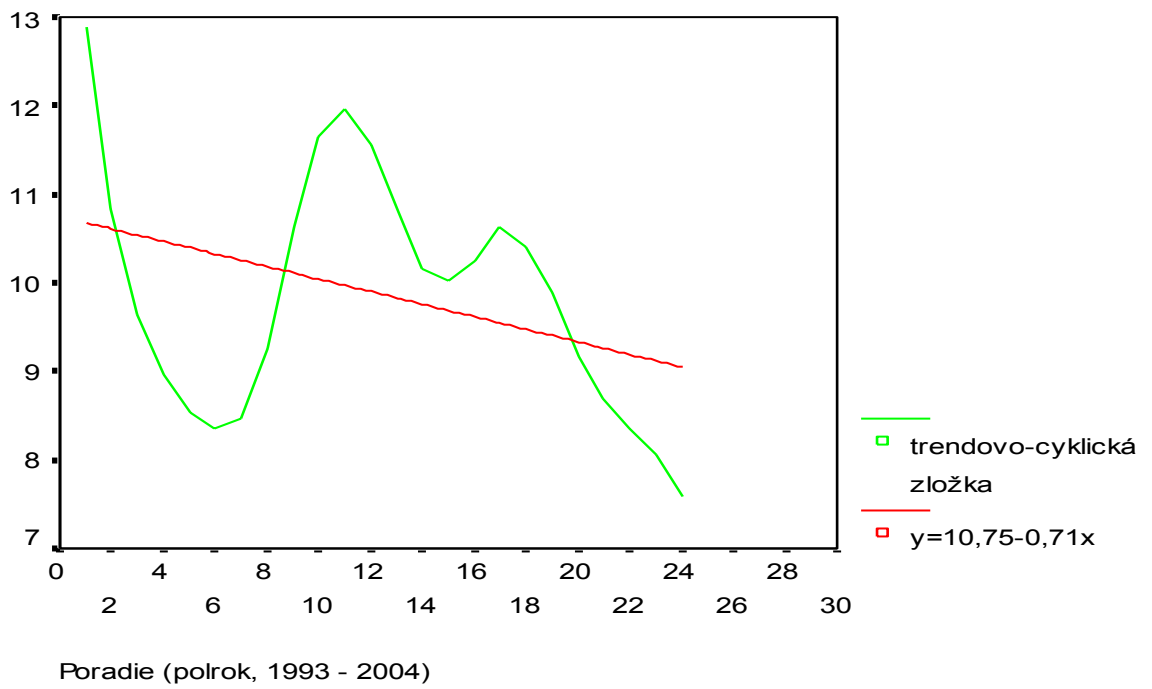


Poradie (polrok, 1994 - 2004)

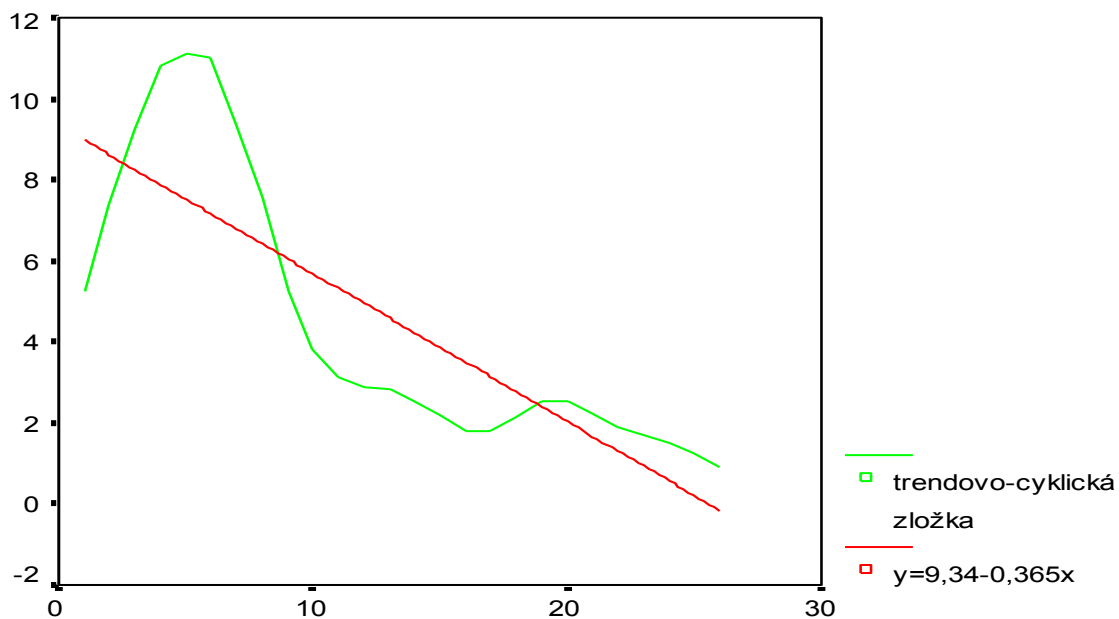
Malinovo (22,5 - 27,5 m)



Vydrany-Kvetoslavov (68,5 - 71,5 m)

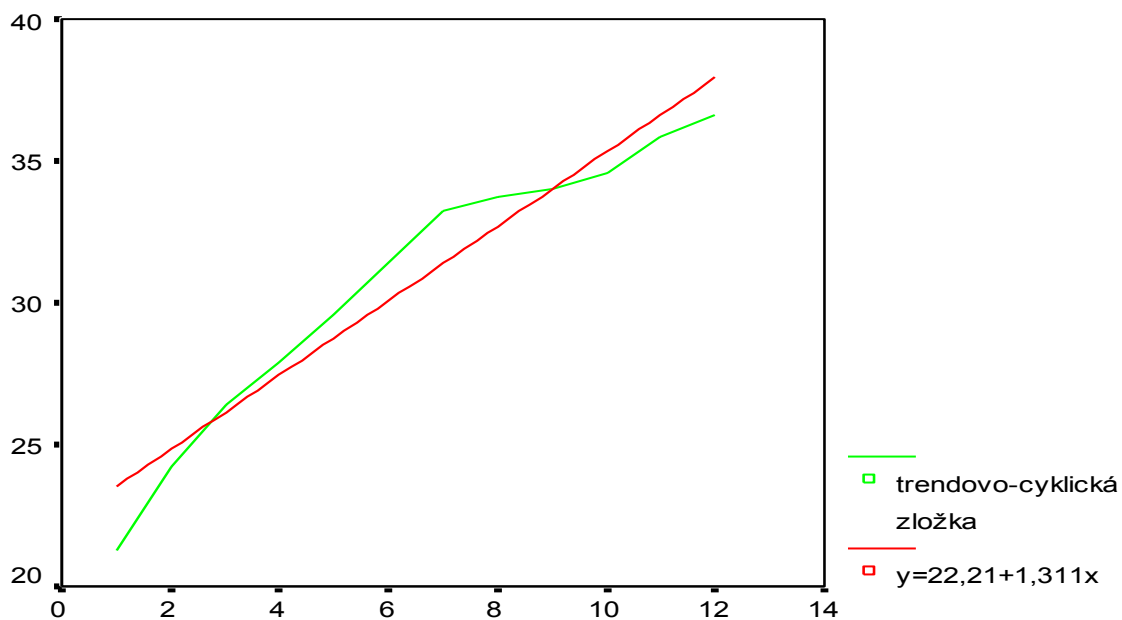


Šamorín - Čilistov (86,5 - 89,5 m)



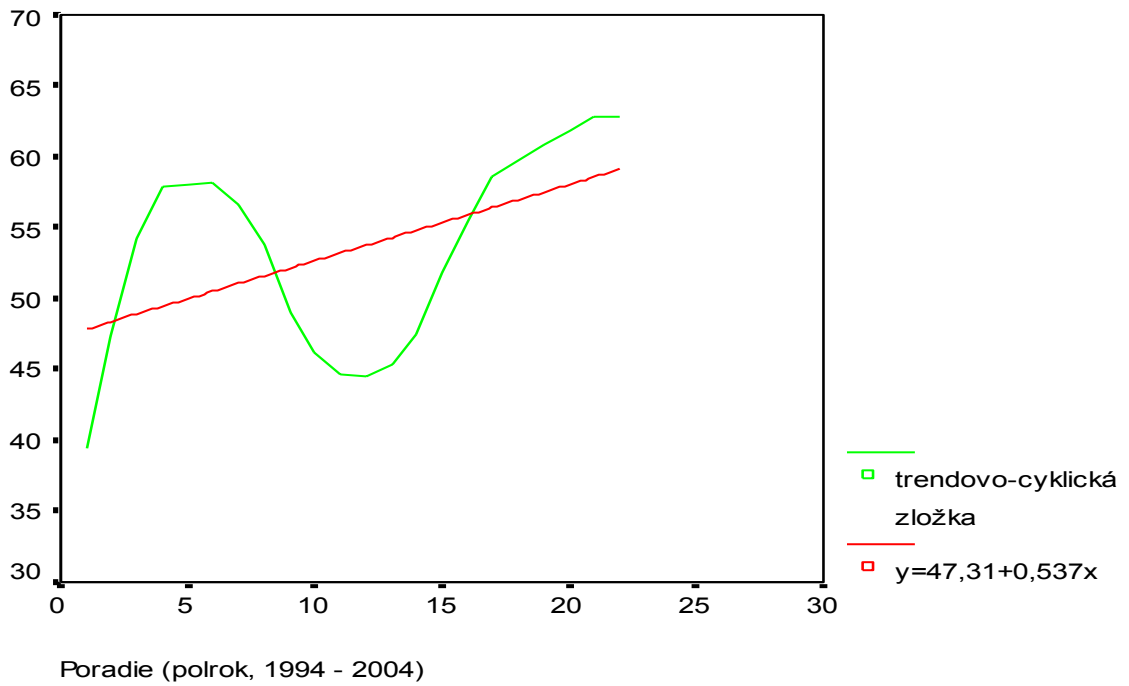
Poradie (polročne, 1992-2004)

Horná Potôň (31,0 - 34,0 m)

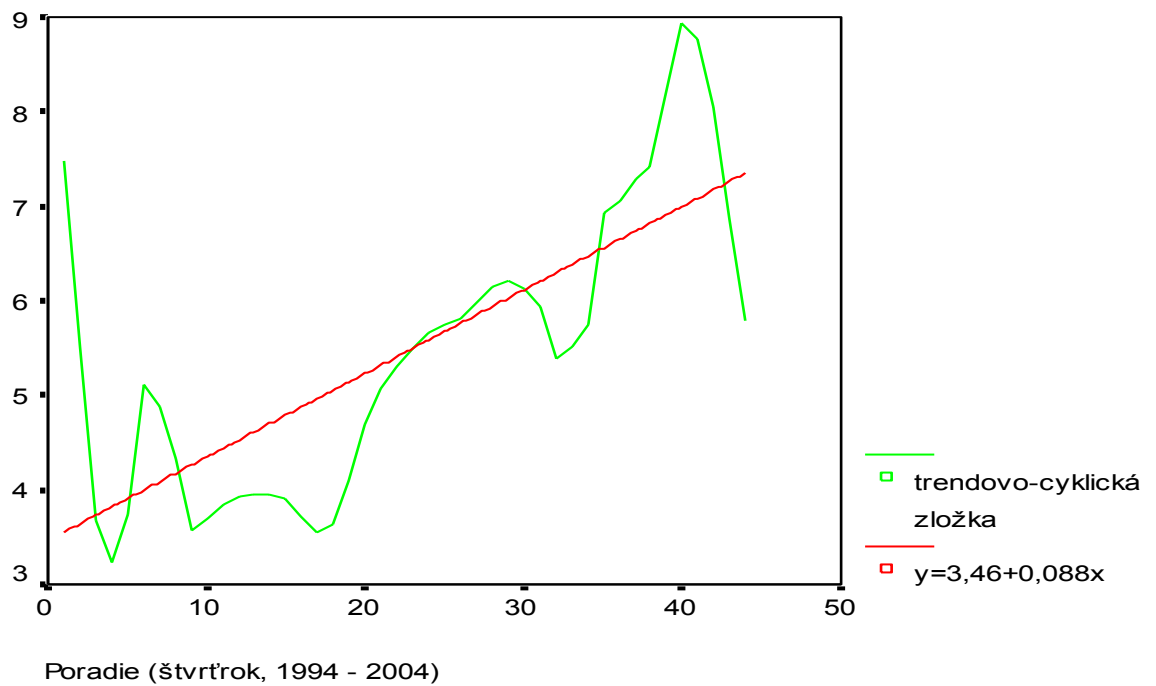


Poradie (polrok, 1999-2004)

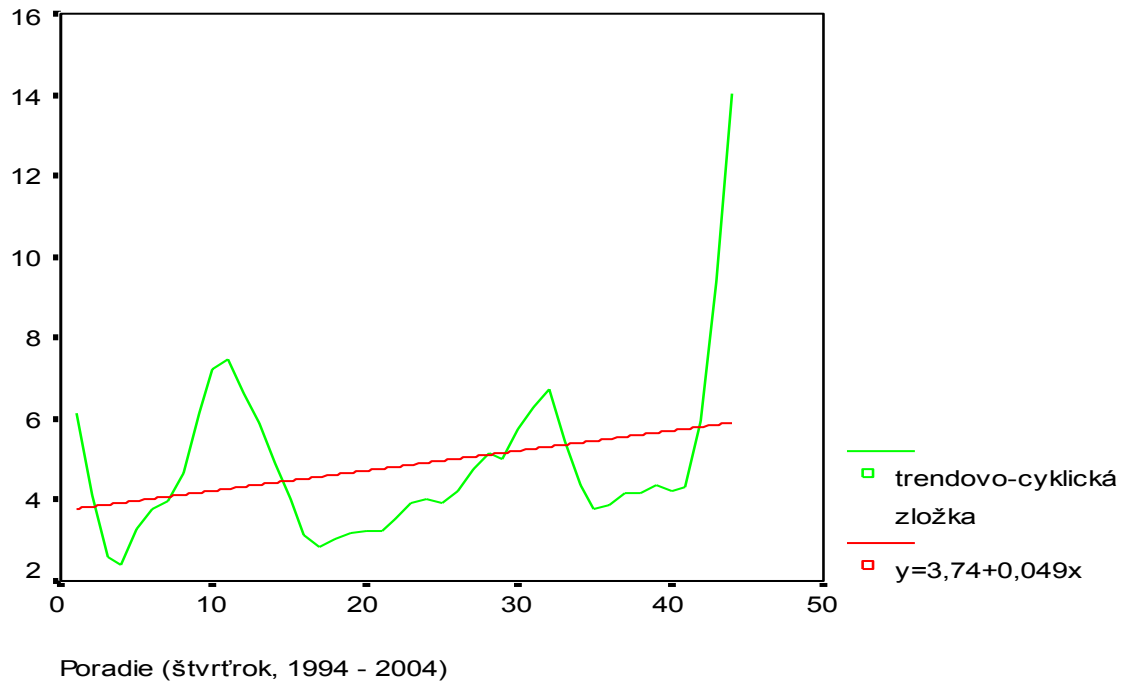
Horná Potôň (3,0 - 5,0 m)



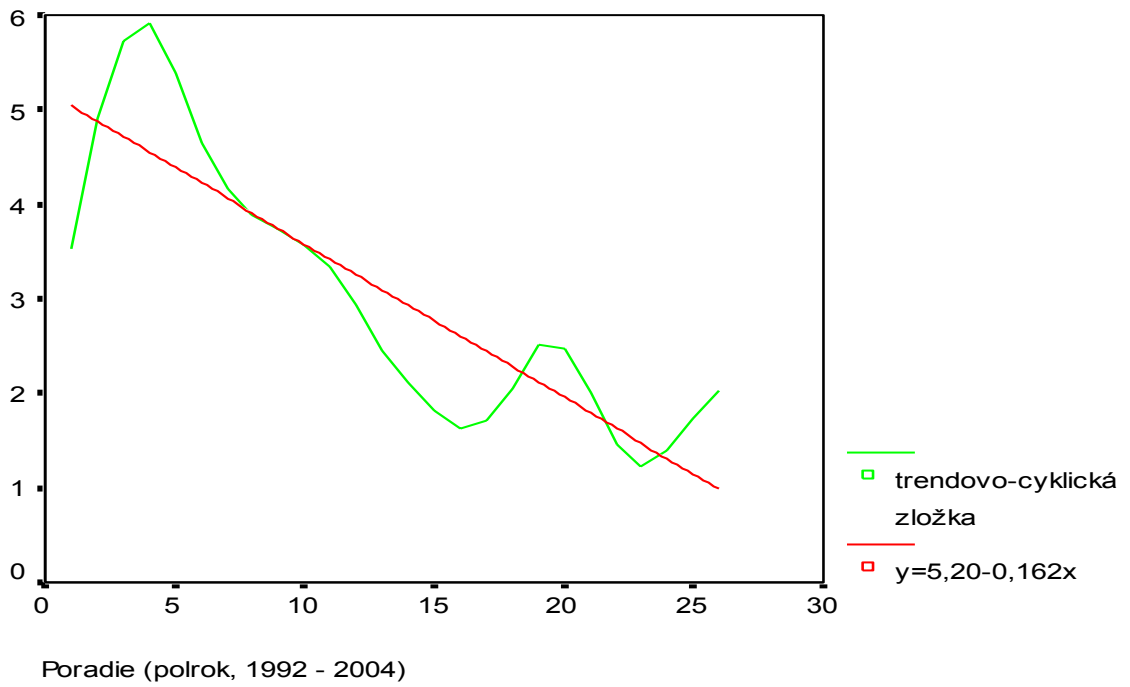
Šamorín - Mliečno (25,0 - 28,0 m)



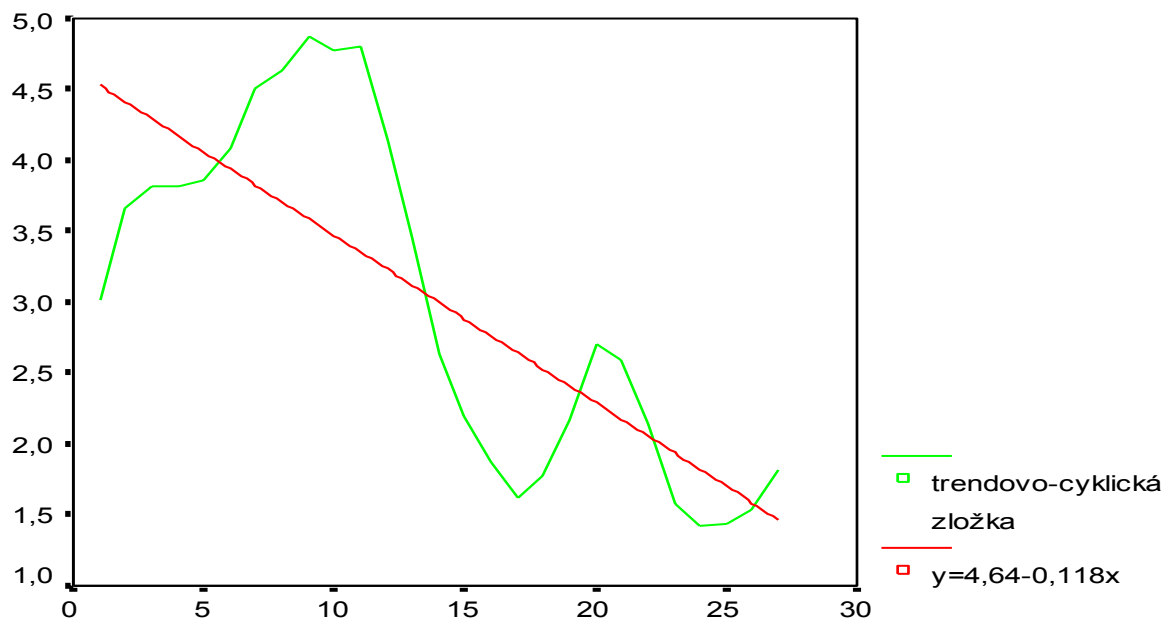
Šamorín - Mliečno (10,0 - 13,0 m)



Vojka (25,0 - 28,0 m)

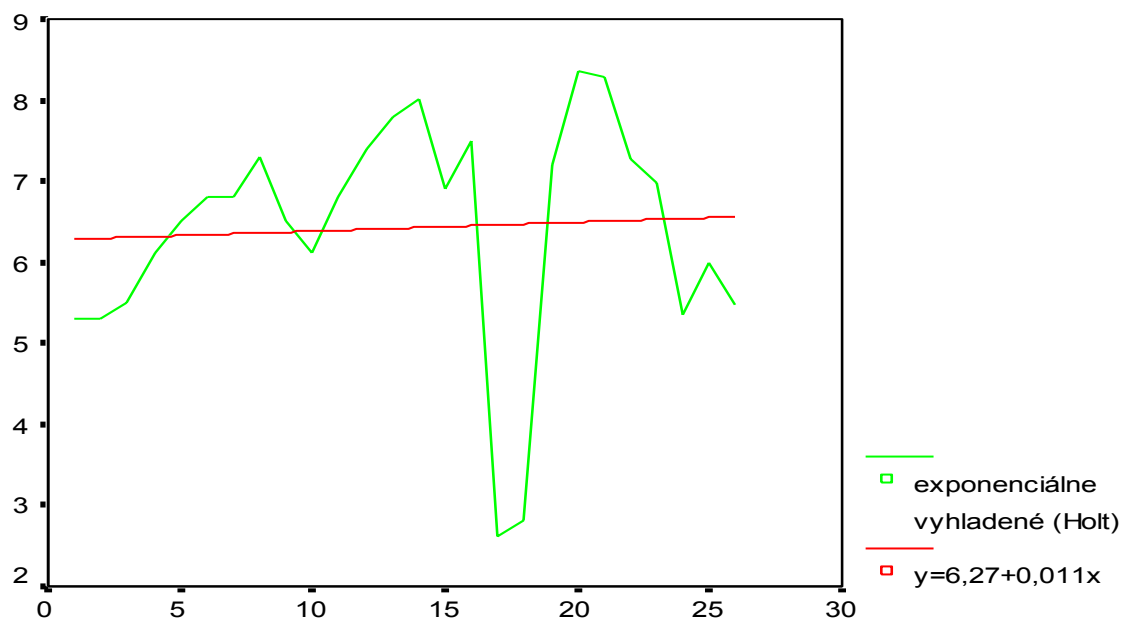


Vojka (11,0 - 13,0 m)



Poradie (polrok, 1992 - 2004)

Rohovce - Štrkovec (81,5 - 84,5 m)

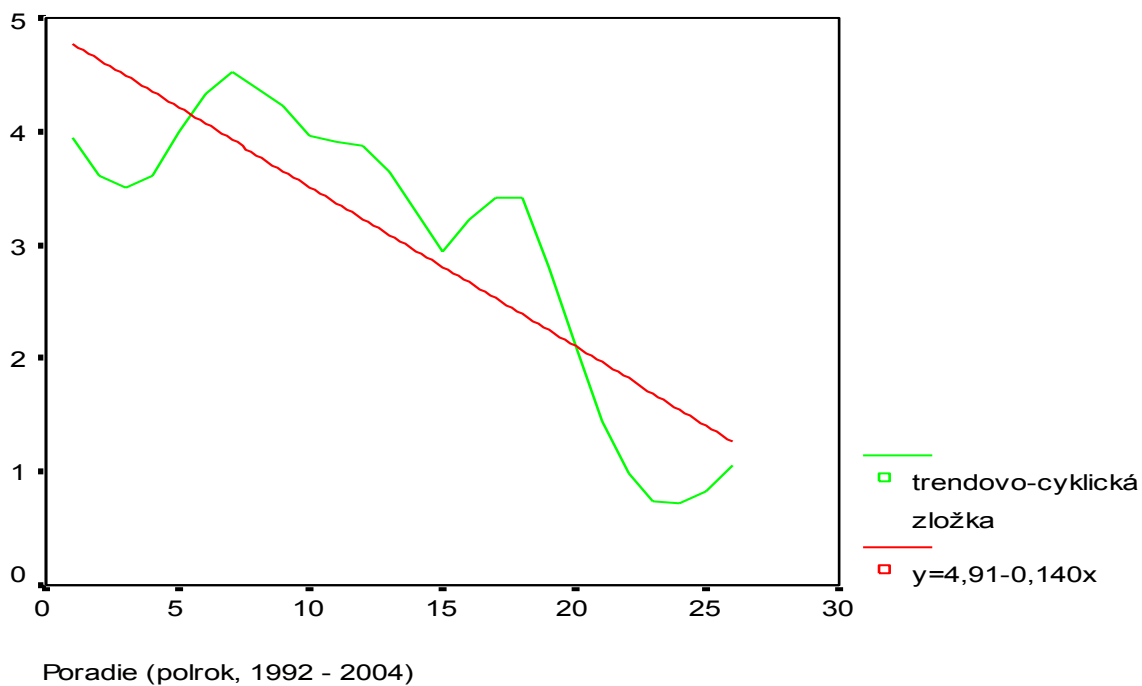


Poradie (polrok, 1992 - 2004)

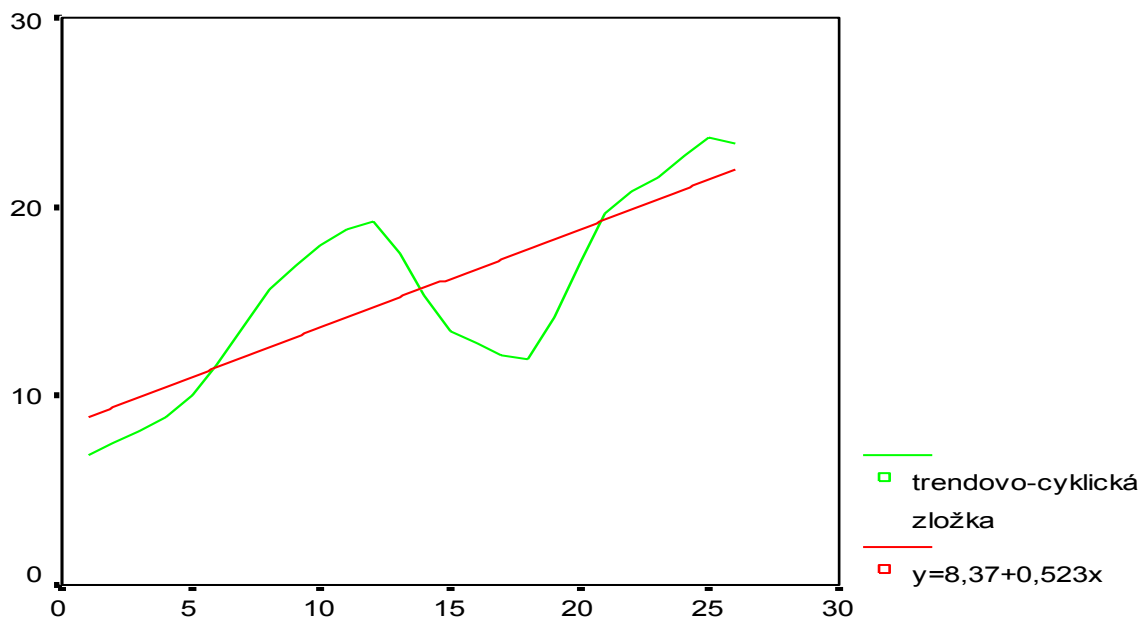
Rohovce - Štrkovec (21,5 - 24,5 m)



Veľké Blahovo (5,0 - 8,0 m)

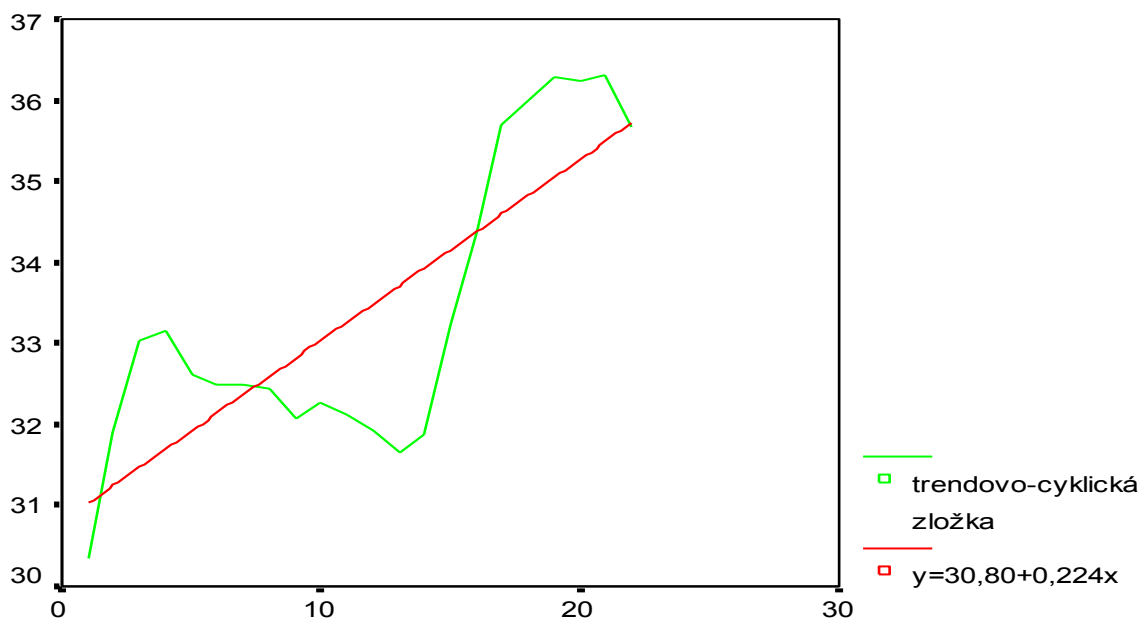


Veľké Blahovo (25,0 - 28,0 m)



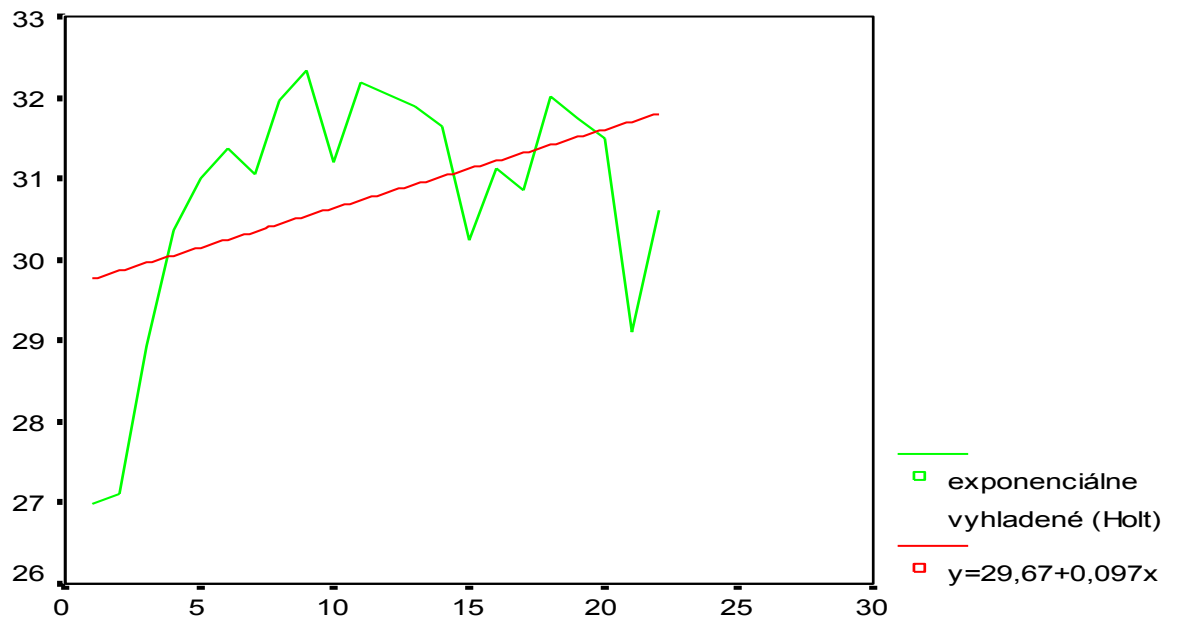
Poradie (polrok, 1992 - 2004)

Orechová Potôň (16,0 - 19,0 m)



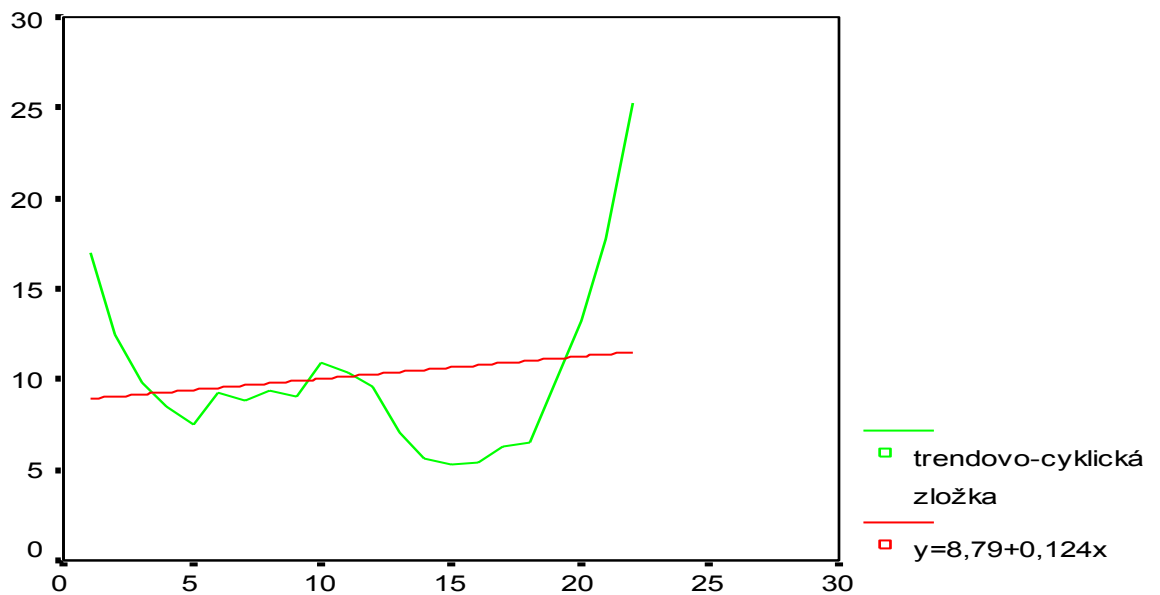
Poradie (polrok, 1994-2004)

Orechová Potôň (5,5 - 8,5 m)



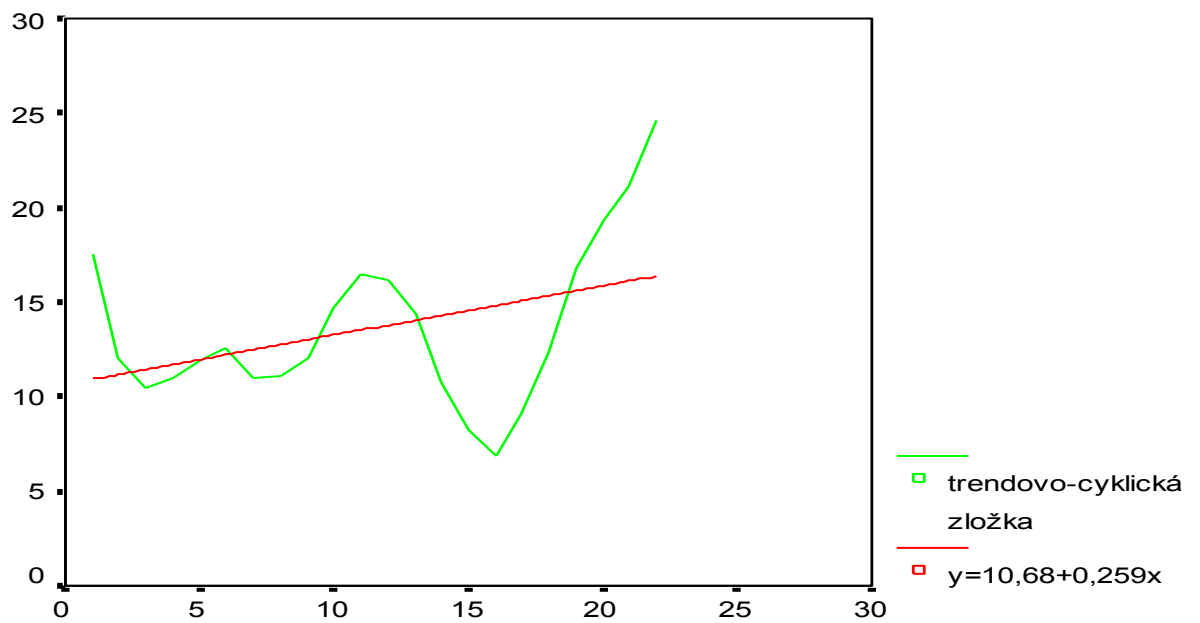
Poradie (polrok, 1994 - 2004)

Kostolné - Kračany (5,5 - 8,5 m)



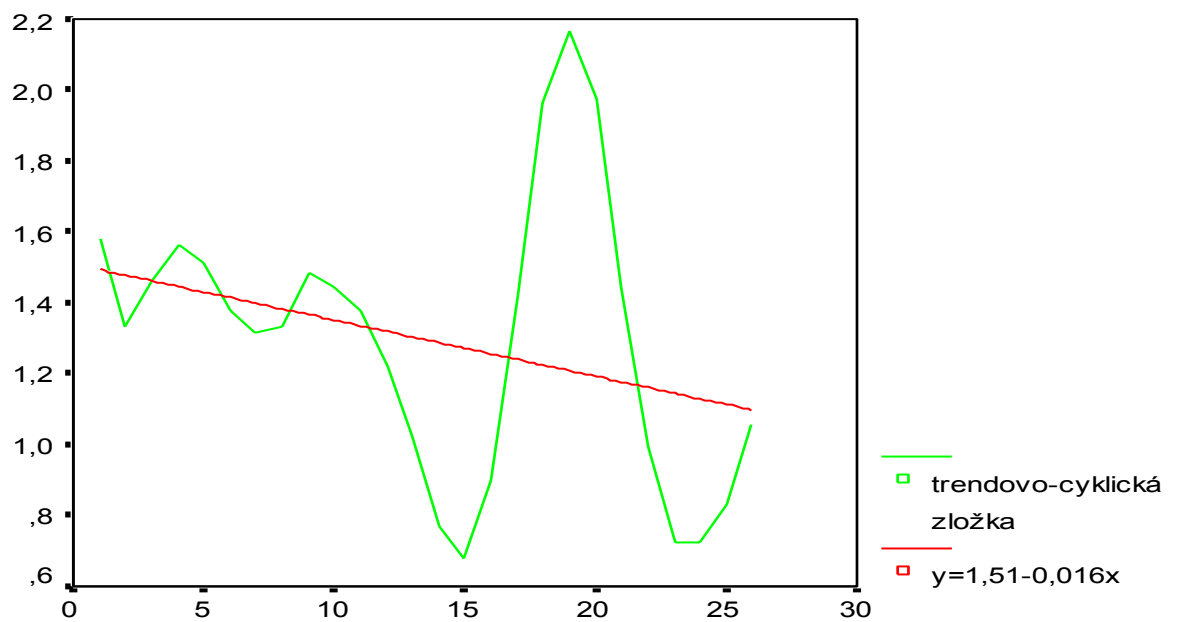
Poradie (polrok, 1994 - 2004)

Kostolné - Kračany (12,5 - 15,5 m)



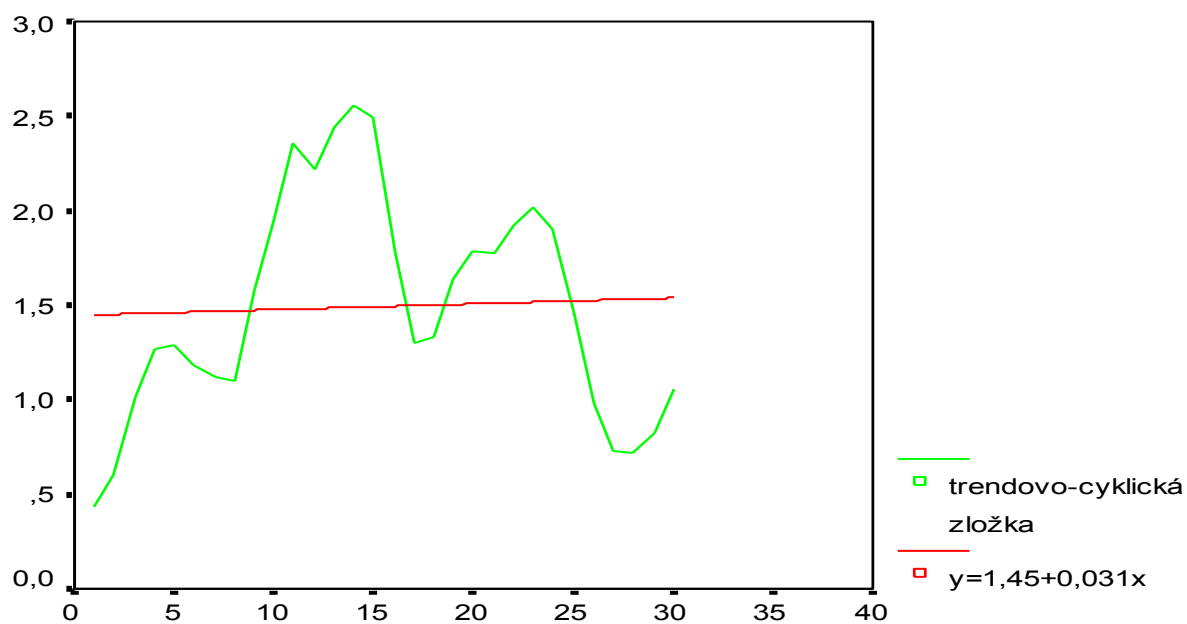
Poradie (polrok, 1994 - 2004)

Palkovičovo - Sap (42,0 - 45,0 m)



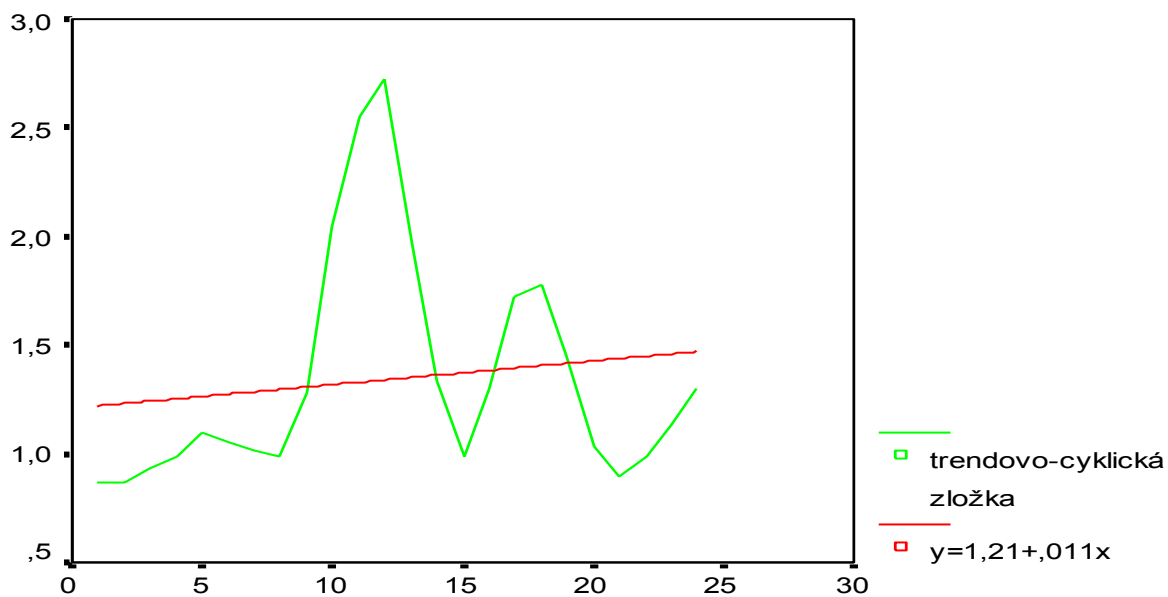
Poradie (polrok, 1992 - 2004)

Palkovičovo - Sap (10,0 - 12,0 m)



Poradie (polrok, 1992 - 2004)

Vrakúň (26,0 - 27,0 m)



Poradie (polrok, 1993 - 2004)

Kľúčovec (9,0 - 11,5 m)

