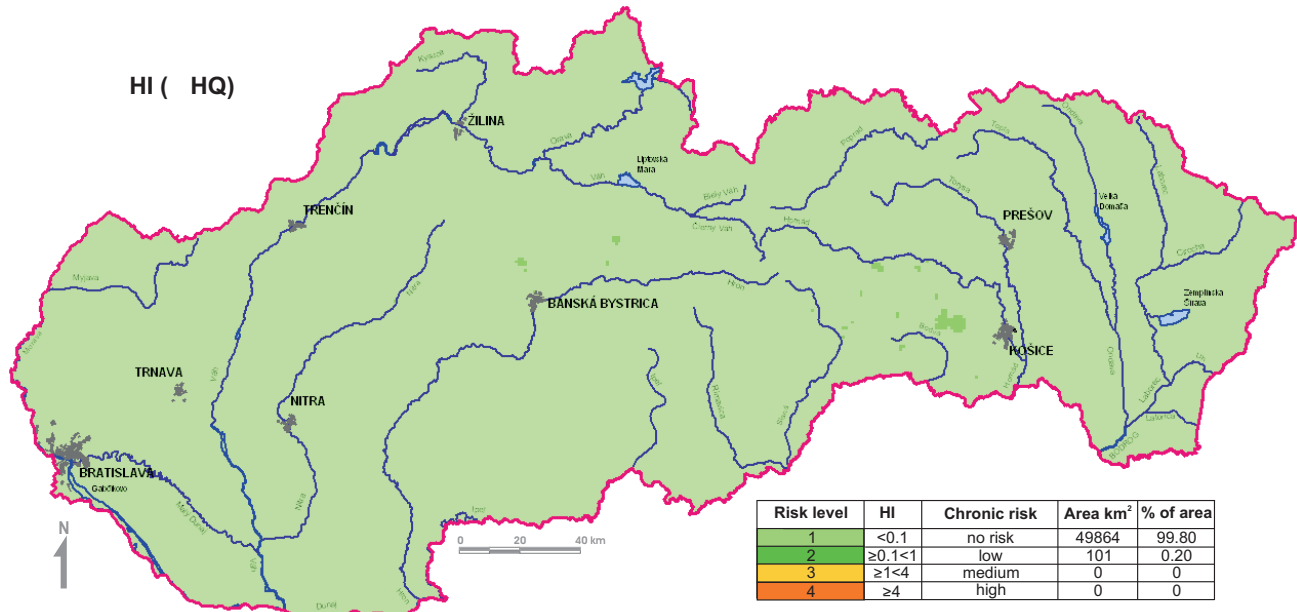
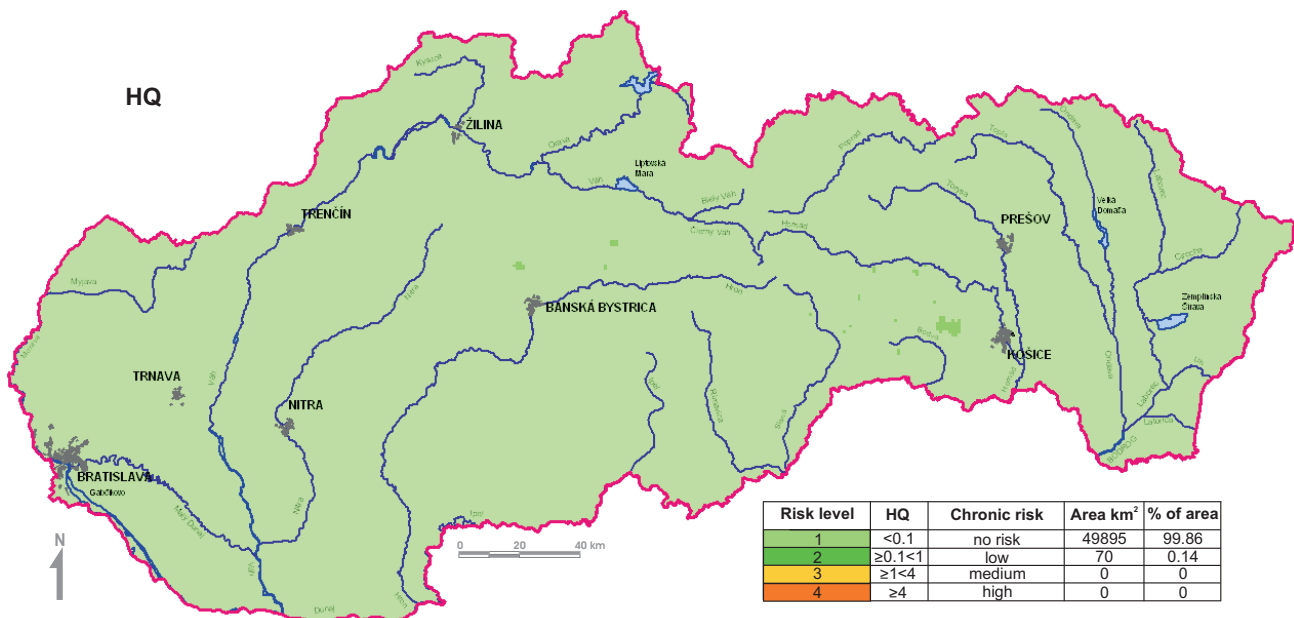


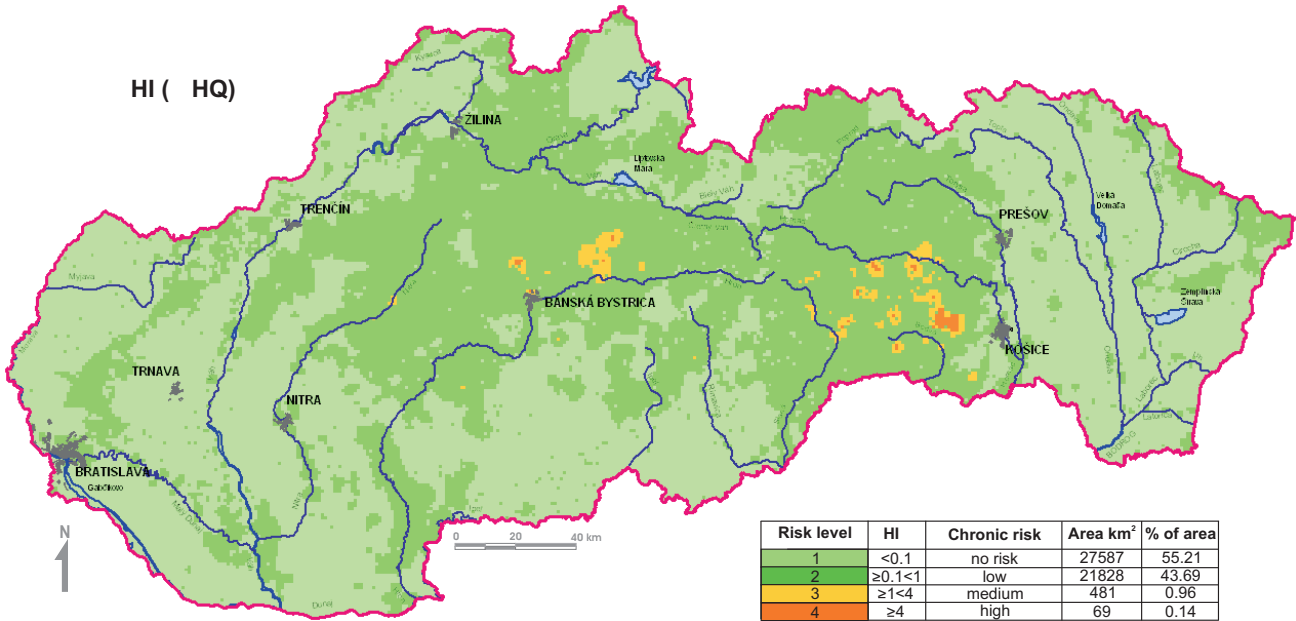
Health risk estimate for chronic disease occurrence due to soil ingestion by adult population of the Slovak Republic
(As, B, Ba, Be, Cd, Cu, F, Hg, Mn, Mo, Ni, Pb, Sb, Se, Zn)



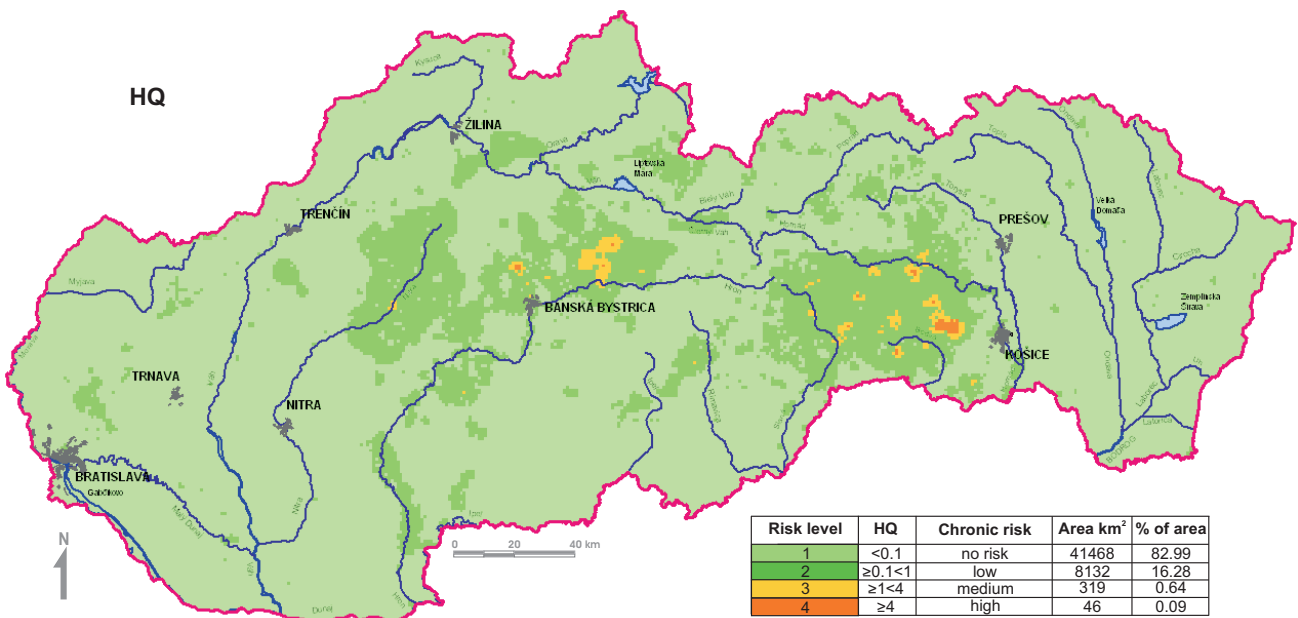
Health risk estimate for chronic disease occurrence due to soil ingestion by adult population of the Slovak Republic
(As, B, Ba, Be, Cd, Cu, F, Hg, Mn, Mo, Ni, Pb, Sb, Se, Zn)



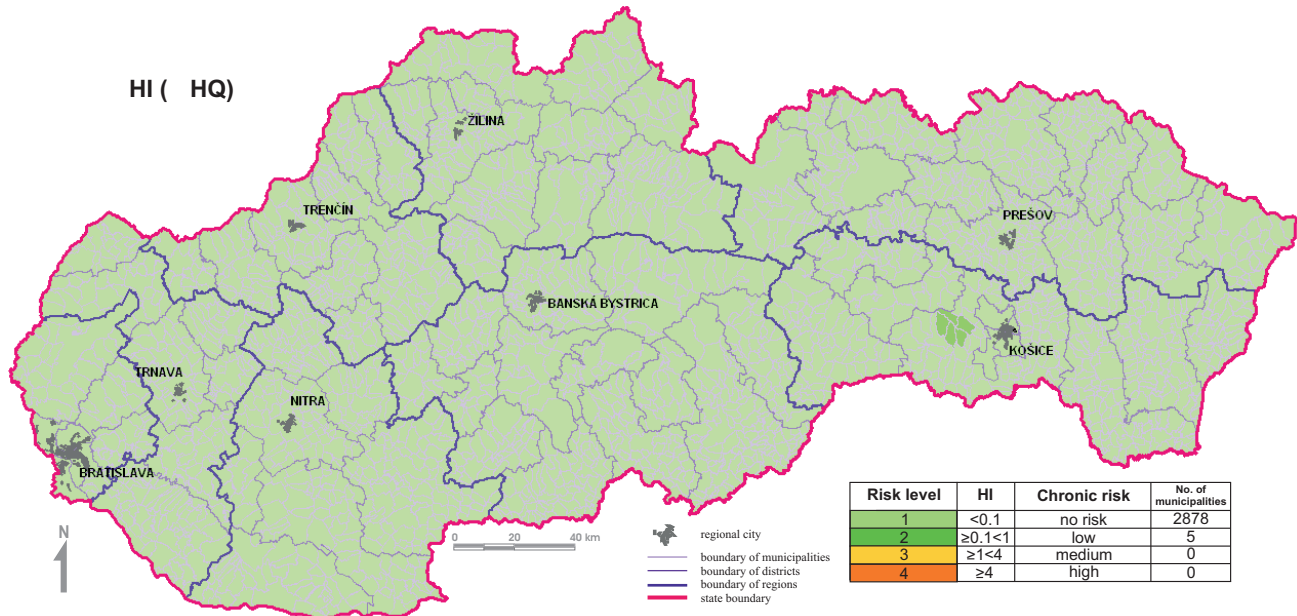
Health risk estimate for chronic disease occurrence due to soil ingestion by child population of the Slovak Republic
(As, B, Ba, Be, Cd, Cu, F, Hg, Mn, Mo, Ni, Pb, Sb, Se, Zn)



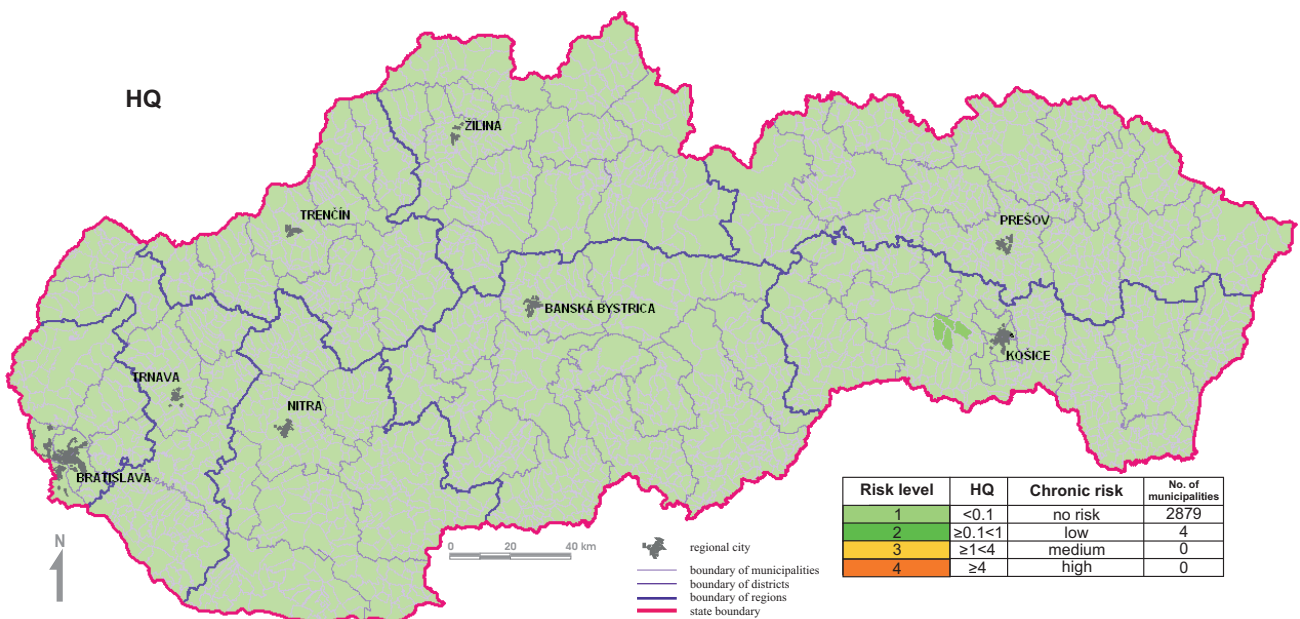
Health risk estimate for chronic disease occurrence due to soil ingestion by child population of the Slovak Republic
(As, B, Ba, Be, Cd, Cu, F, Hg, Mn, Mo, Ni, Pb, Sb, Se, Zn)



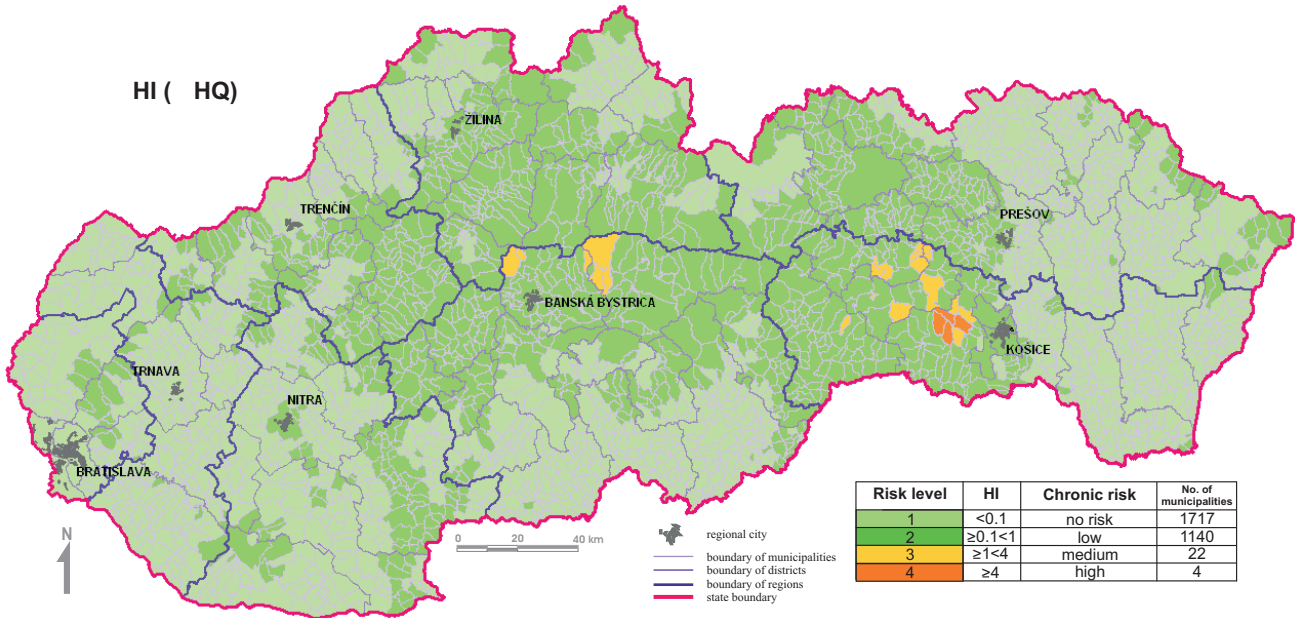
Health risk estimate for chronic disease occurrence due to soil ingestion by adult population of the Slovak Republic - MUNICIPALITIES (As, B, Ba, Be, Cd, Cu, F, Hg, Mn, Mo, Ni, Pb, Sb, Se, Zn)



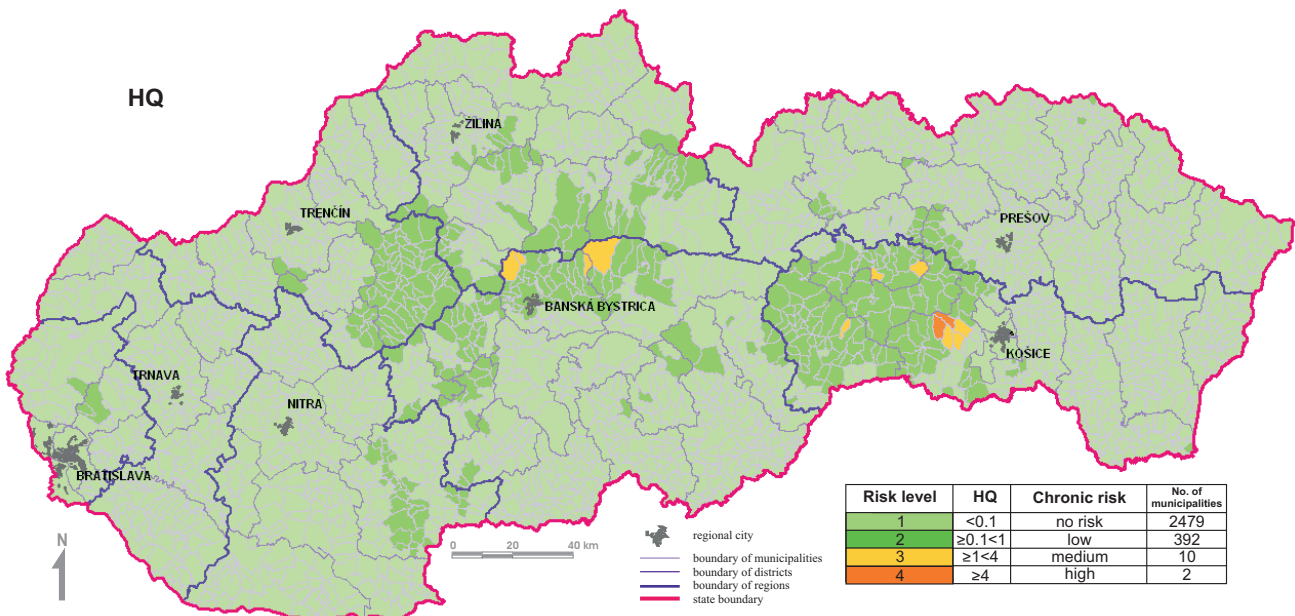
Health risk estimate for chronic disease occurrence due to soil ingestion by adult population of the Slovak Republic - MUNICIPALITIES (As, B, Ba, Be, Cd, Cu, F, Hg, Mn, Mo, Ni, Pb, Sb, Se, Zn)



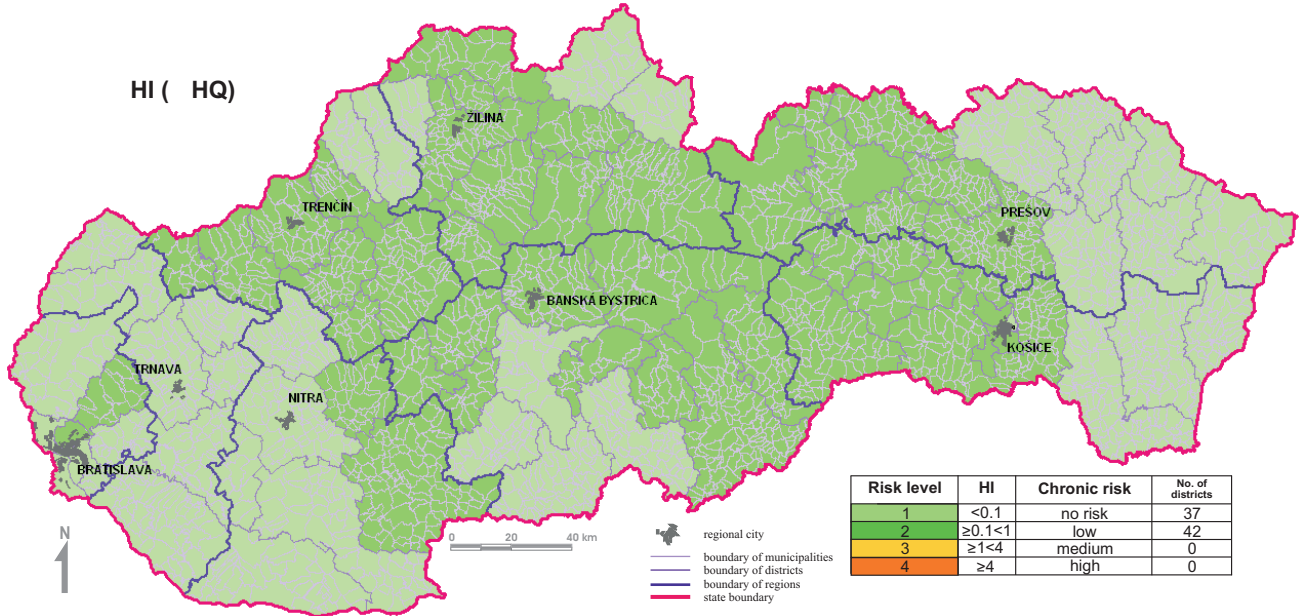
Health risk estimate for chronic disease occurrence due to soil ingestion by child population of the Slovak Republic - MUNICIPALITIES (As, B, Ba, Be, Cd, Cu, F, Hg, Mn, Mo, Ni, Pb, Sb, Se, Zn)



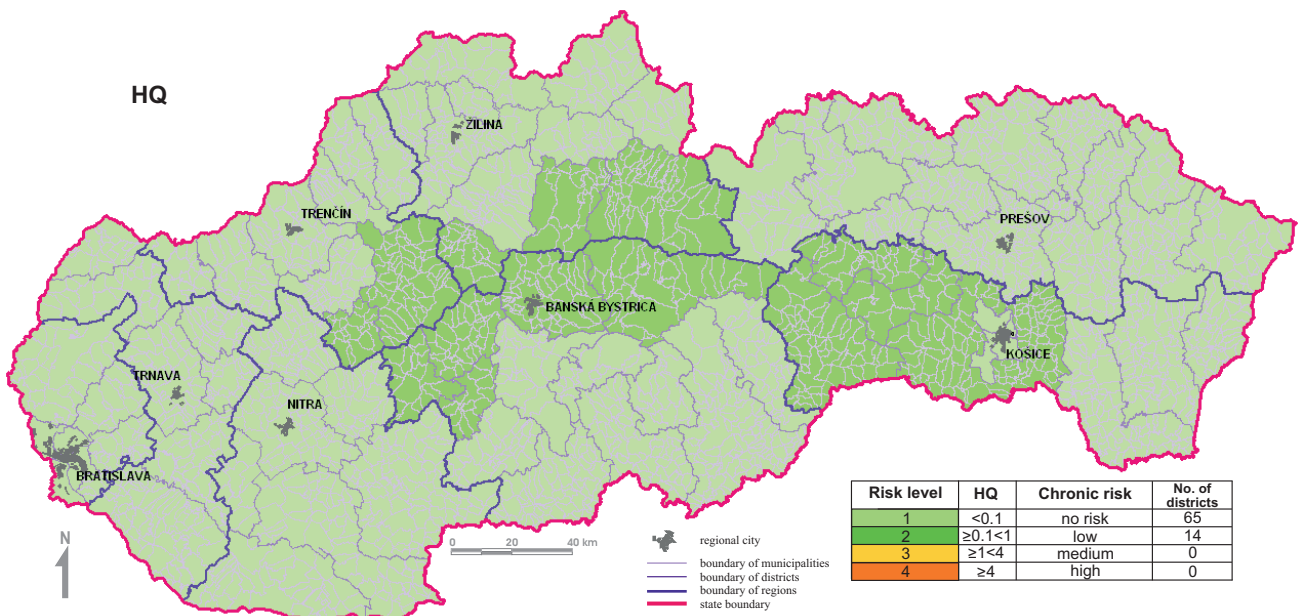
Health risk estimate for chronic disease occurrence due to soil ingestion by child population of the Slovak Republic - MUNICIPALITIES (As, B, Ba, Be, Cd, Cu, F, Hg, Mn, Mo, Ni, Pb, Sb, Se, Zn)



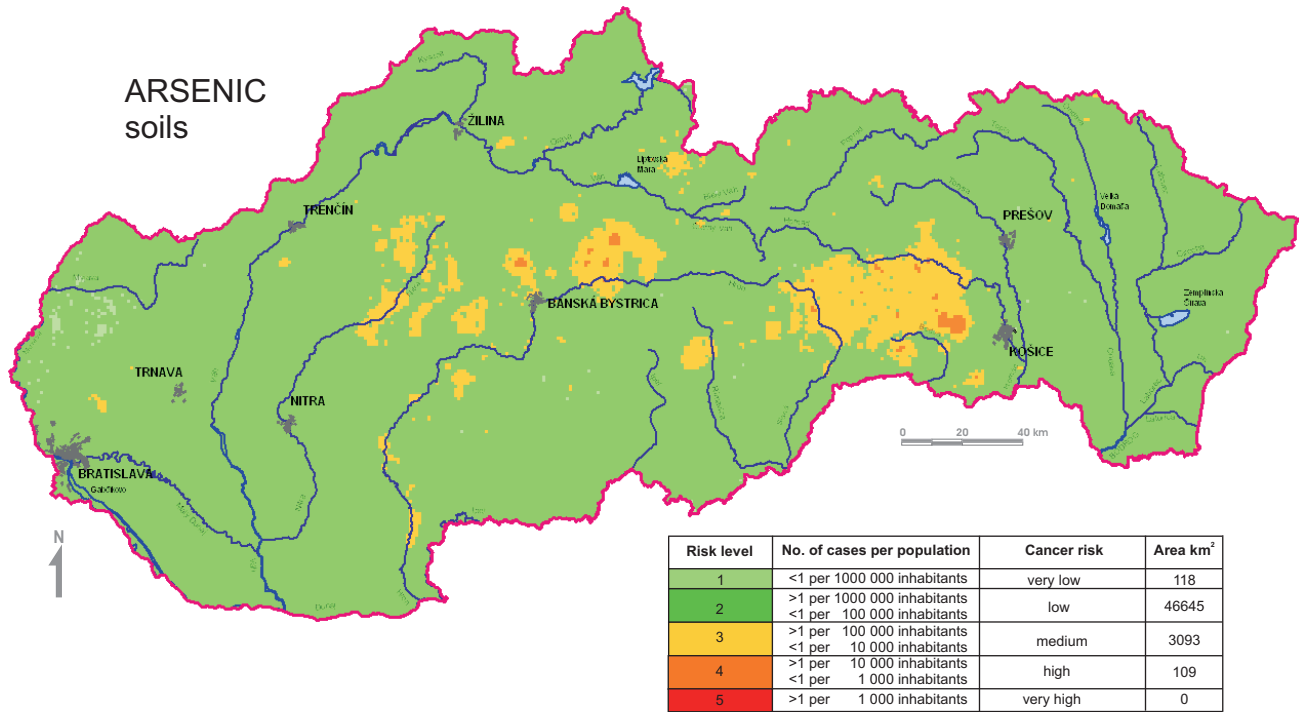
Health risk estimate for chronic disease occurrence due to soil ingestion by child population of the Slovak Republic - DISTRICTS
(As, B, Ba, Be, Cd, Cu, F, Hg, Mn, Mo, Ni, Pb, Sb, Se, Zn)



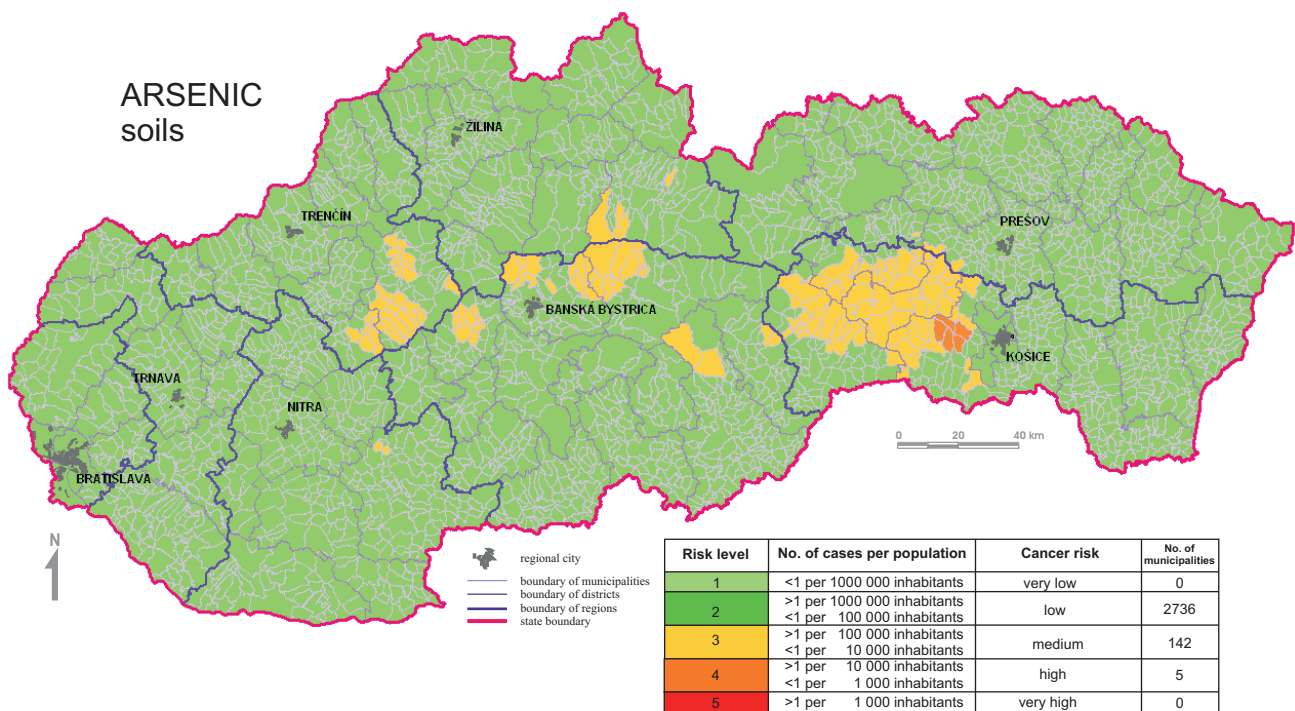
Health risk estimate for chronic disease occurrence due to soil ingestion by child population of the Slovak Republic - DISTRICTS
(As, B, Ba, Be, Cd, Cu, F, Hg, Mn, Mo, Ni, Pb, Sb, Se, Zn)



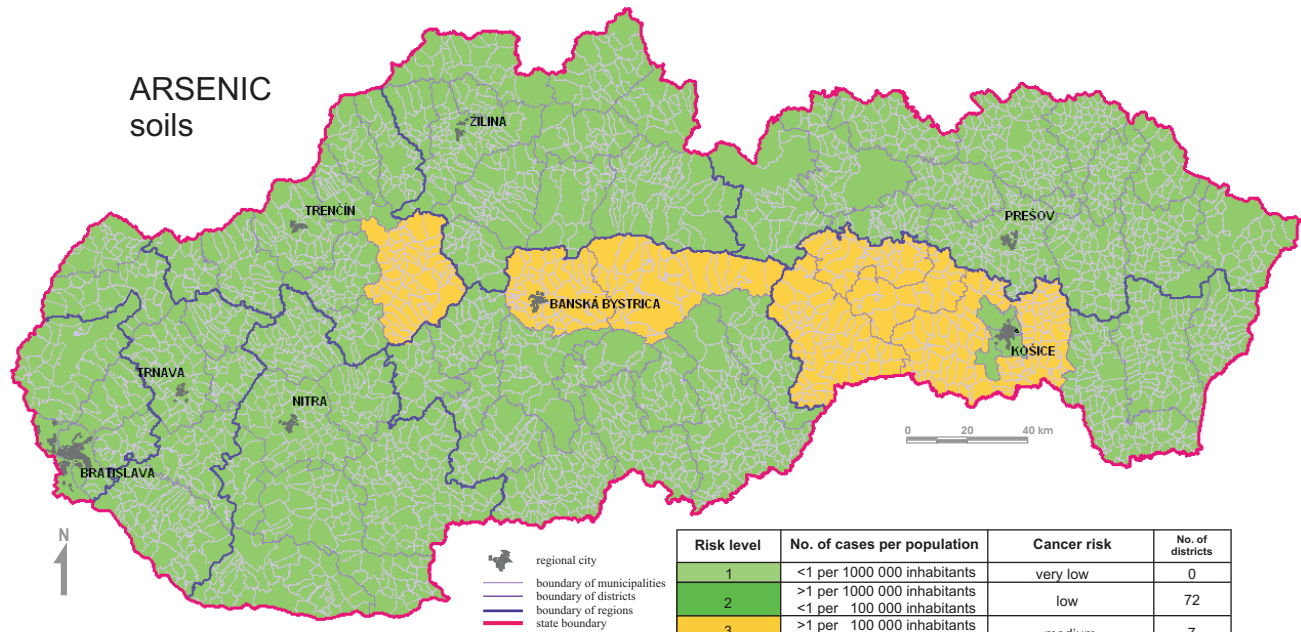
Health risk estimate for carcinogenic disease occurrence due to soil ingestion by population of the Slovak Republic



Health risk estimate for carcinogenic disease occurrence due to soil ingestion by population of the Slovak Republic - MUNICIPALITIES



Health risk estimate for carcinogenic disease occurrence due to soil ingestion by population of the Slovak Republic - DISTRICTS



Risk level	No. of cases per population	Cancer risk	No. of districts
1	<1 per 1000 000 inhabitants	very low	0
2	>1 per 1000 000 inhabitants <1 per 100 000 inhabitants	low	72
3	>1 per 100 000 inhabitants <1 per 10 000 inhabitants	medium	7
4	>1 per 10 000 inhabitants <1 per 1 000 inhabitants	high	0
5	>1 per 1 000 inhabitants	very high	0