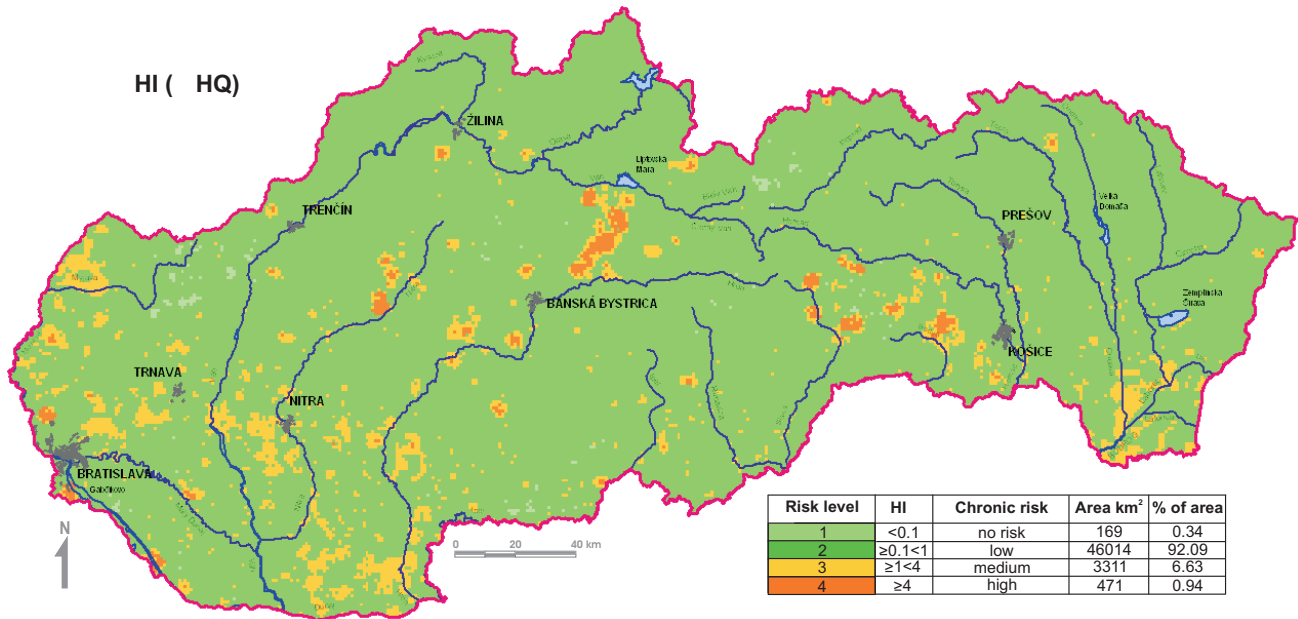
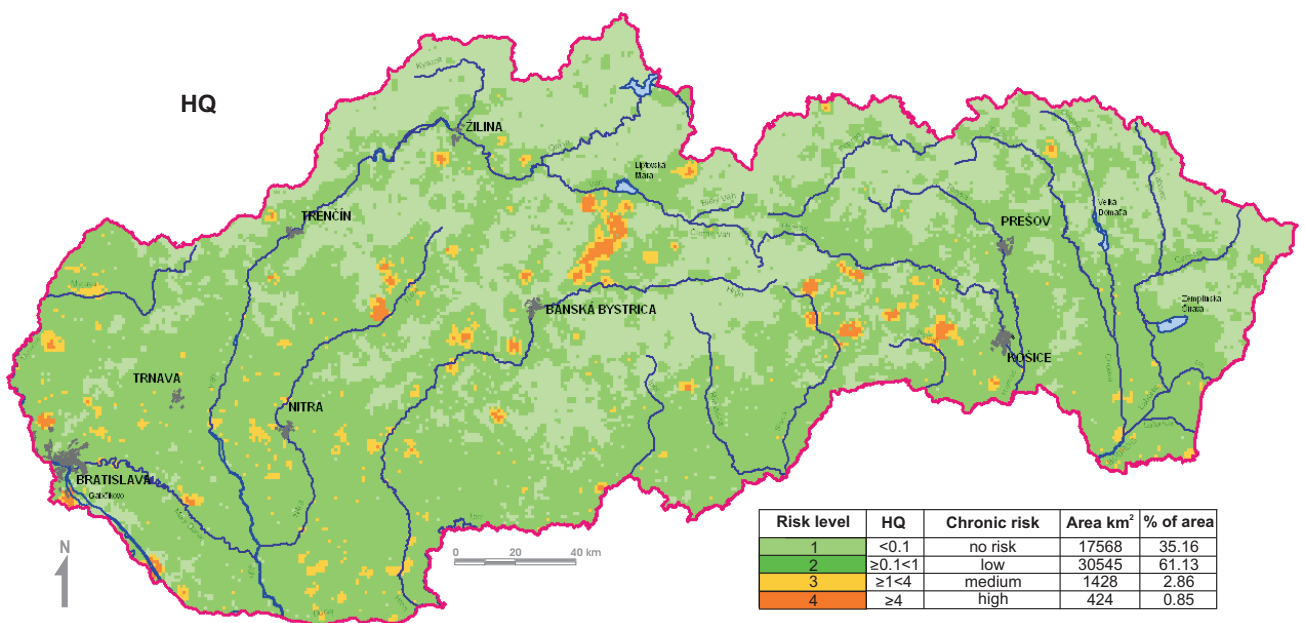


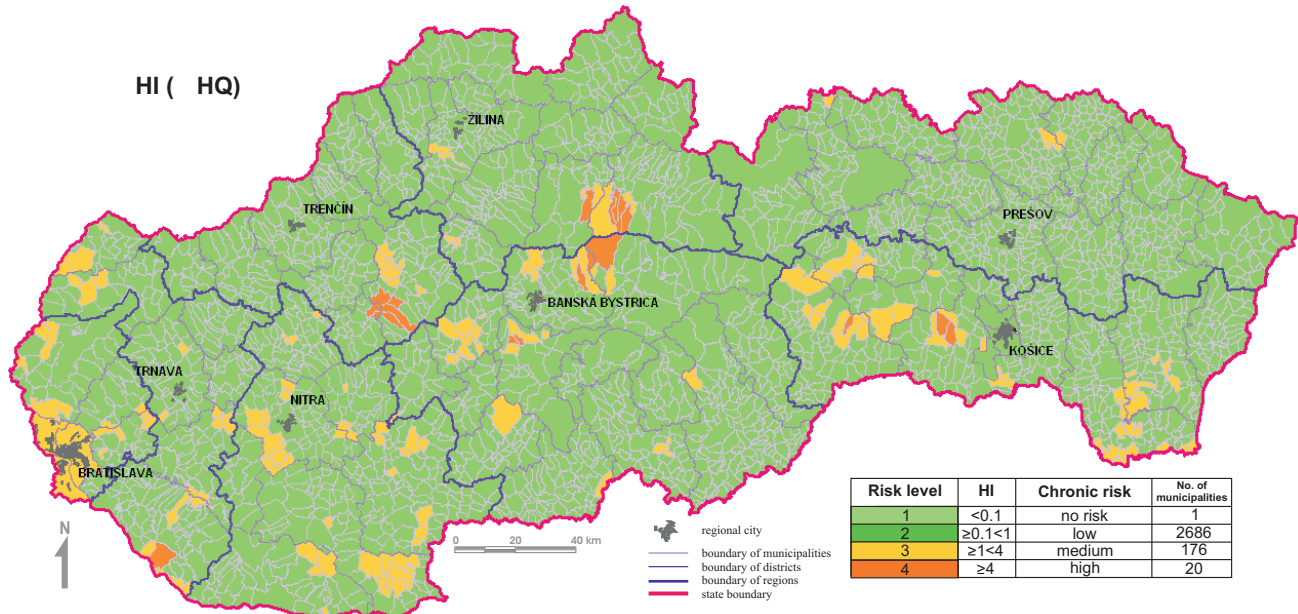
Health risk estimate for chronic disease occurrence due to groundwater ingestion by adult population of the Slovak Republic (As, Ba, Cd, Cu, F, Hg, Mn, NO₃, Pb, Sb, Se, Zn)



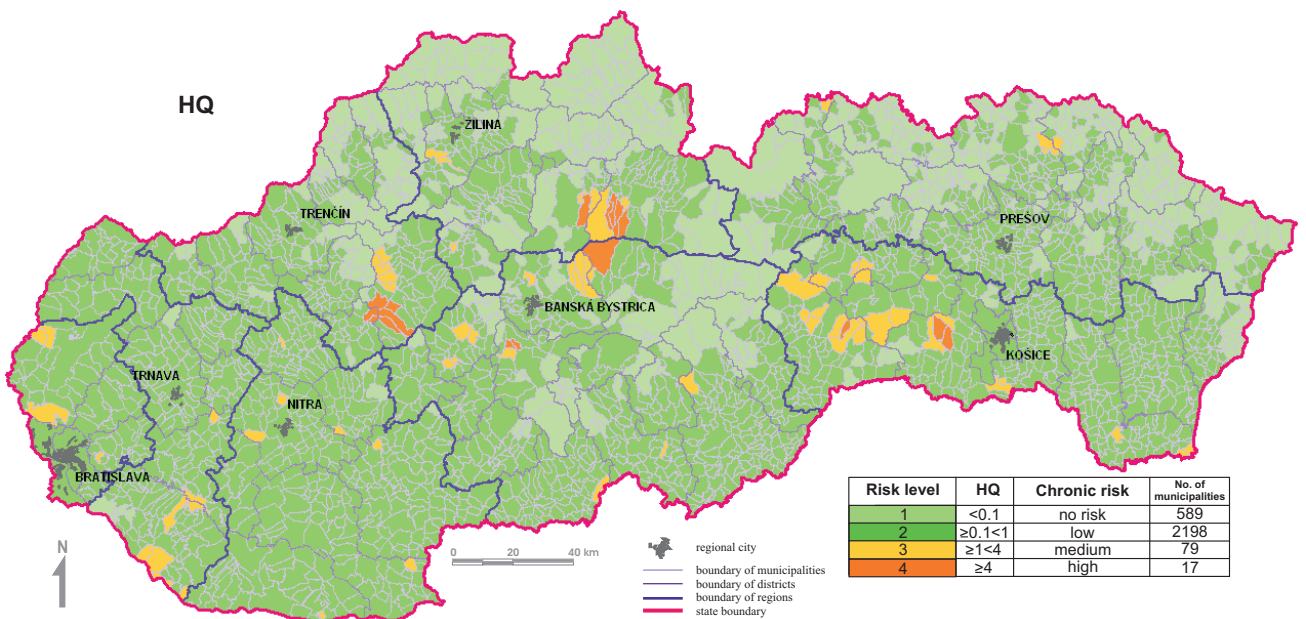
Health risk estimate for chronic disease occurrence due to groundwater ingestion by adult population of the Slovak Republic (As, Ba, Cd, Cu, F, Hg, Mn, NO₃, Pb, Sb, Se, Zn)



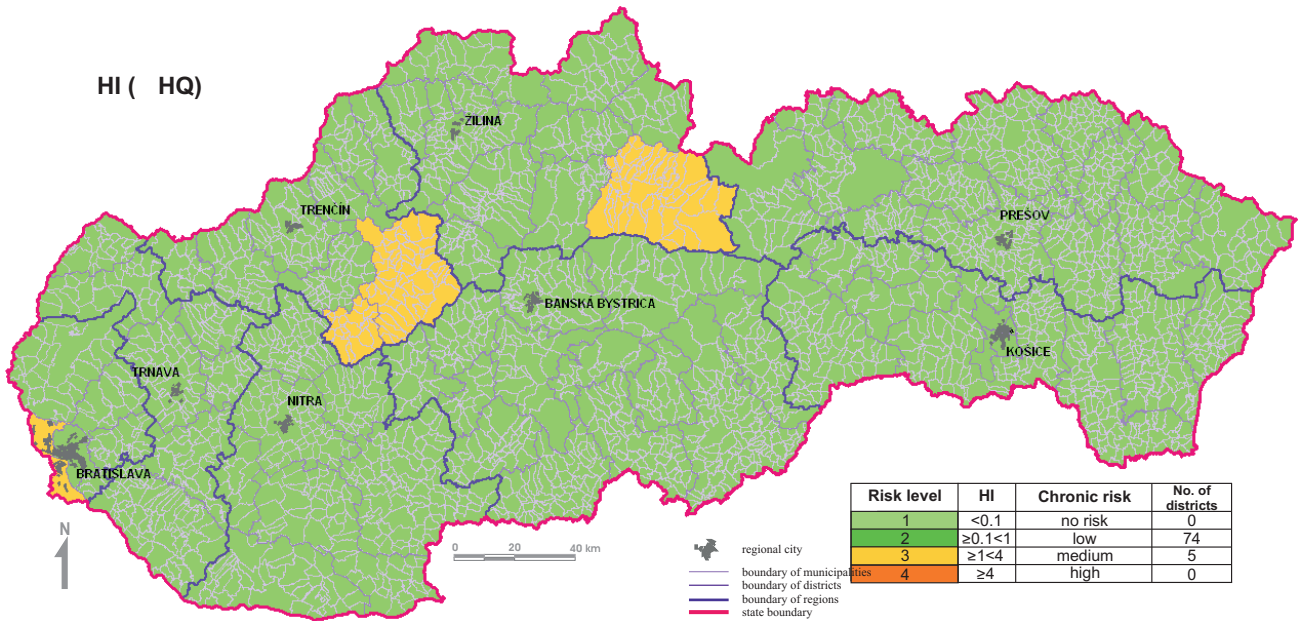
Health risk estimate for chronic disease occurrence due to groundwater ingestion by adult population of the Slovak Republic - MUNICIPALITIES (As, Ba, Cd, Cu, F, Hg, Mn, NO₃, Pb, Sb, Se, Zn)



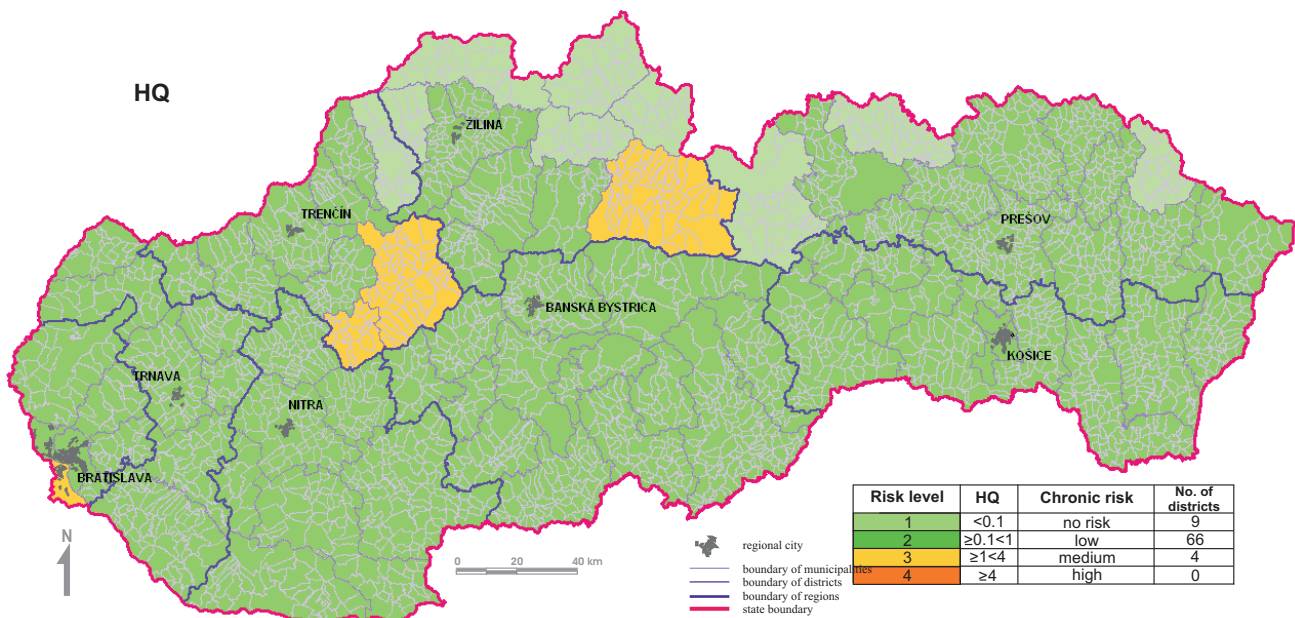
Health risk estimate for chronic disease occurrence due to groundwater ingestion by adult population of the Slovak Republic - MUNICIPALITIES (As, Ba, Cd, Cu, F, Hg, Mn, NO₃, Pb, Sb, Se, Zn)



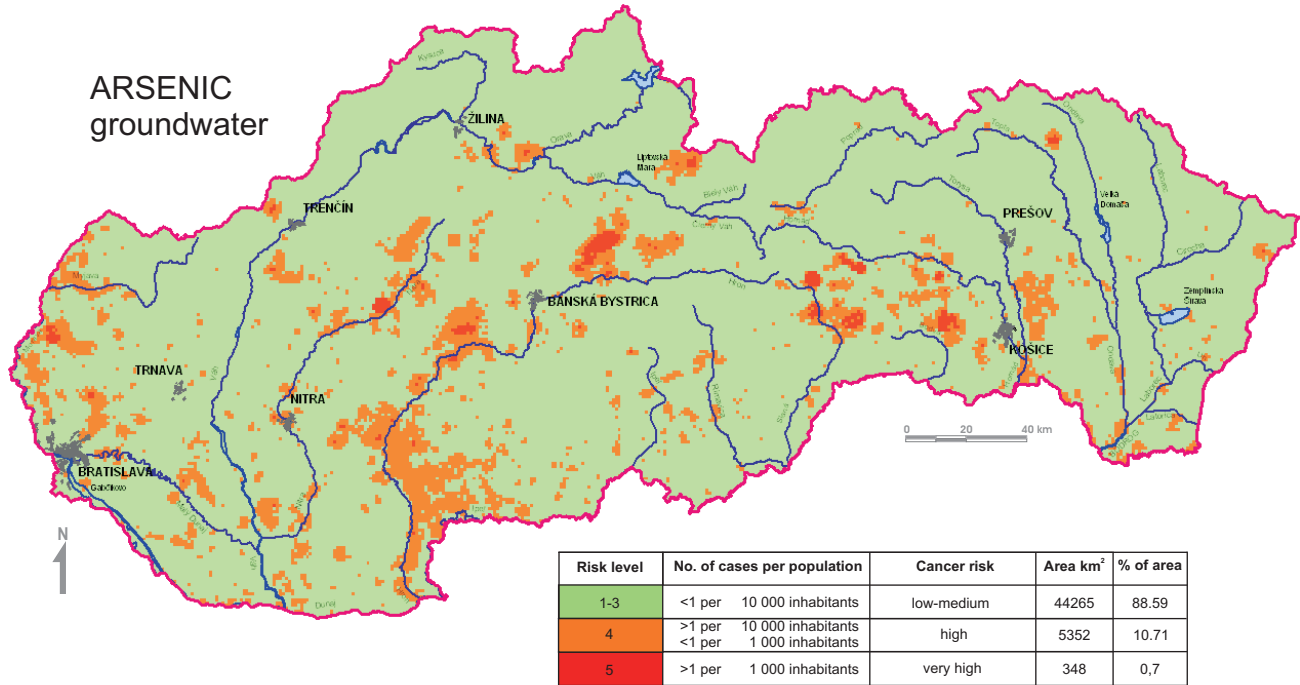
Health risk estimate for chronic disease occurrence due to groundwater ingestion by adult population of the Slovak Republic - DISTRICTS (As, Ba, Cd, Cu, F, Hg, Mn, NO₃, Pb, Sb, Se, Zn)



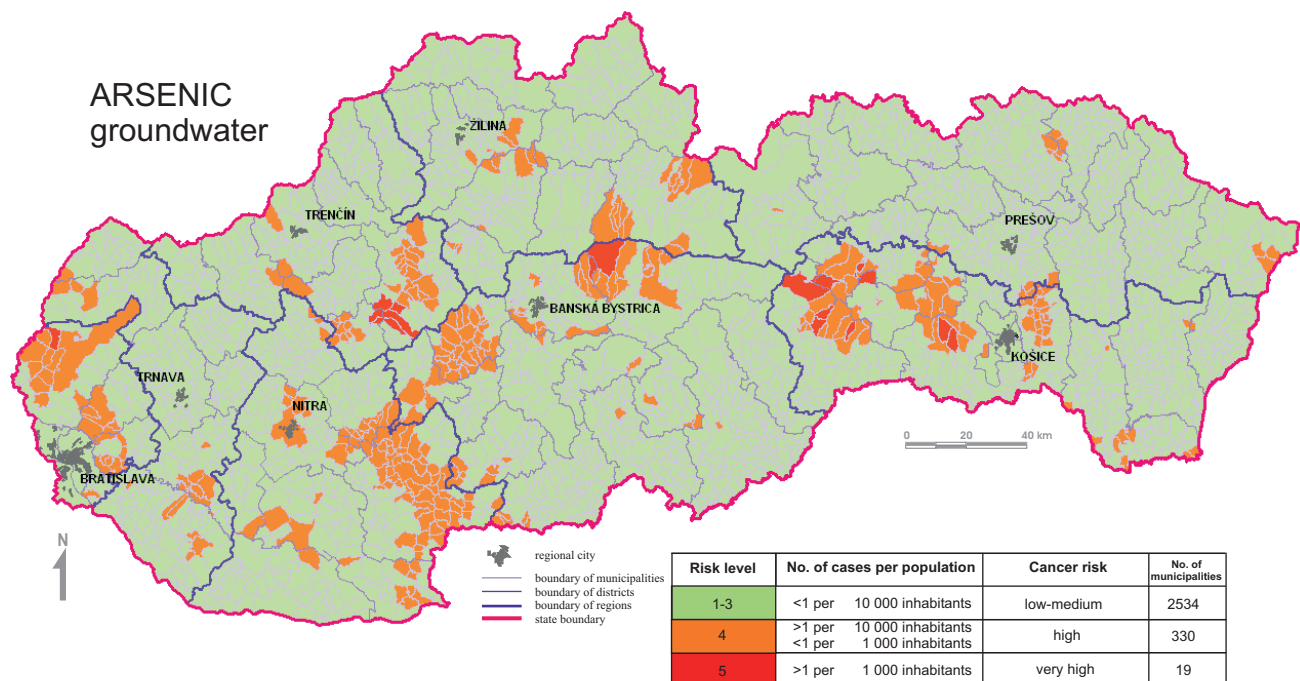
Health risk estimate for chronic disease occurrence due to groundwater ingestion by adult population of the Slovak Republic - DISTRICTS (As, Ba, Cd, Cu, F, Hg, Mn, NO₃, Pb, Sb, Se, Zn)



Health risk estimate for carcinogenic disease occurrence due to groundwater ingestion by adult population of the Slovak Republic



Health risk estimate for carcinogenic disease occurrence due to groundwater ingestion by adult population of the Slovak Republic - MUNICIPALITIES



Health risk estimate for carcinogenic disease occurrence due to groundwater ingestion by adult population of the Slovak Republic - DISTRICTS

