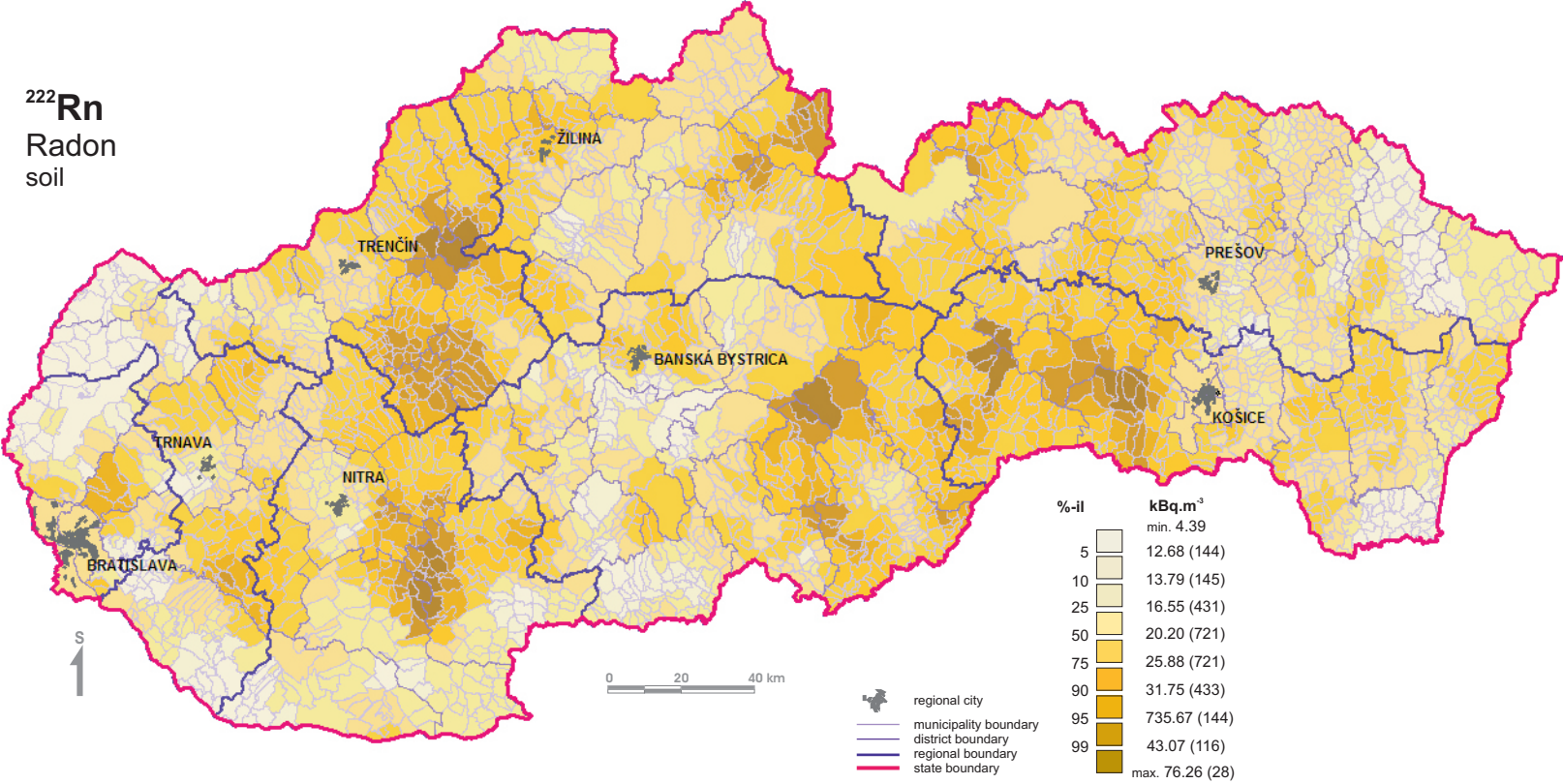


Radon distribution in soils of the Slovak Republic - municipalities

²²²Rn
Radon
soil



%-il	kBq.m ⁻³
	min. 4.39
5	12.68 (144)
10	13.79 (145)
25	16.55 (431)
50	20.20 (721)
75	25.88 (721)
90	31.75 (433)
95	735.67 (144)
99	43.07 (116)
	max. 76.26 (28)

- regional city
- municipality boundary
- district boundary
- regional boundary
- state boundary

Note: No. in brackets represents number of municipalities in correspondent intervals.