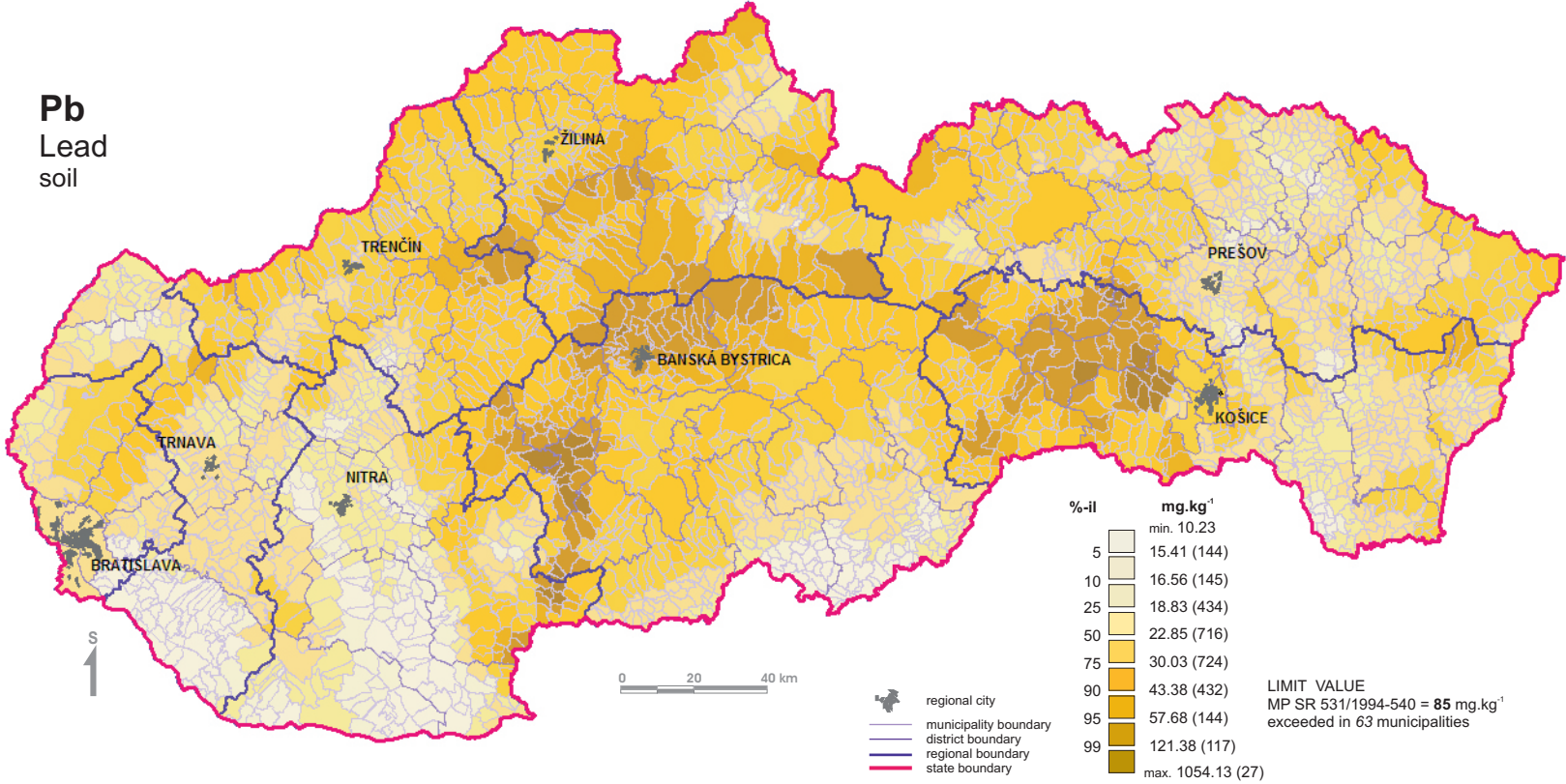


Lead distribution in soils of the Slovak Republic - municipalities

Pb
Lead
soil



%-il	mg.kg ⁻¹
	min. 10.23
5	15.41 (144)
10	16.56 (145)
25	18.83 (434)
50	22.85 (716)
75	30.03 (724)
90	43.38 (432)
95	57.68 (144)
99	121.38 (117)
	max. 1054.13 (27)

LIMIT VALUE
MP SR 531/1994-540 = 85 mg.kg⁻¹
exceeded in 63 municipalities

Note: No. in brackets represents number of municipalities in correspondent intervals.