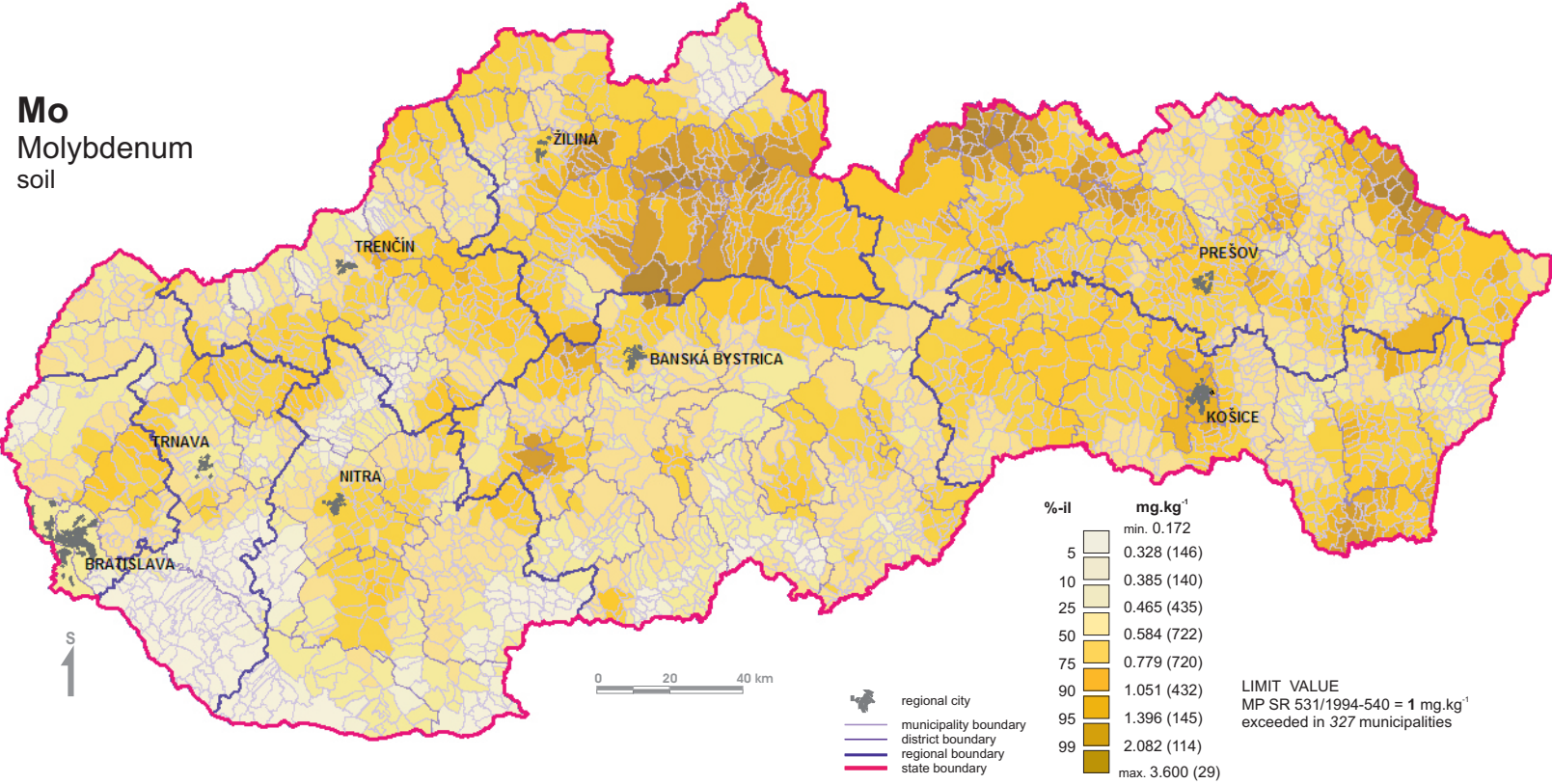


Molybdenum distribution in soils of the Slovak Republic - municipalities

Mo
Molybdenum
soil



%-il	mg.kg ⁻¹
	min. 0.172
5	0.328 (146)
10	0.385 (140)
25	0.465 (435)
50	0.584 (722)
75	0.779 (720)
90	1.051 (432)
95	1.396 (145)
99	2.082 (114)
	max. 3.600 (29)

LIMIT VALUE
MP SR 531/1994-540 = 1 mg.kg⁻¹
exceeded in 327 municipalities

Note: No. in brackets represents number of municipalities in correspondent intervals.