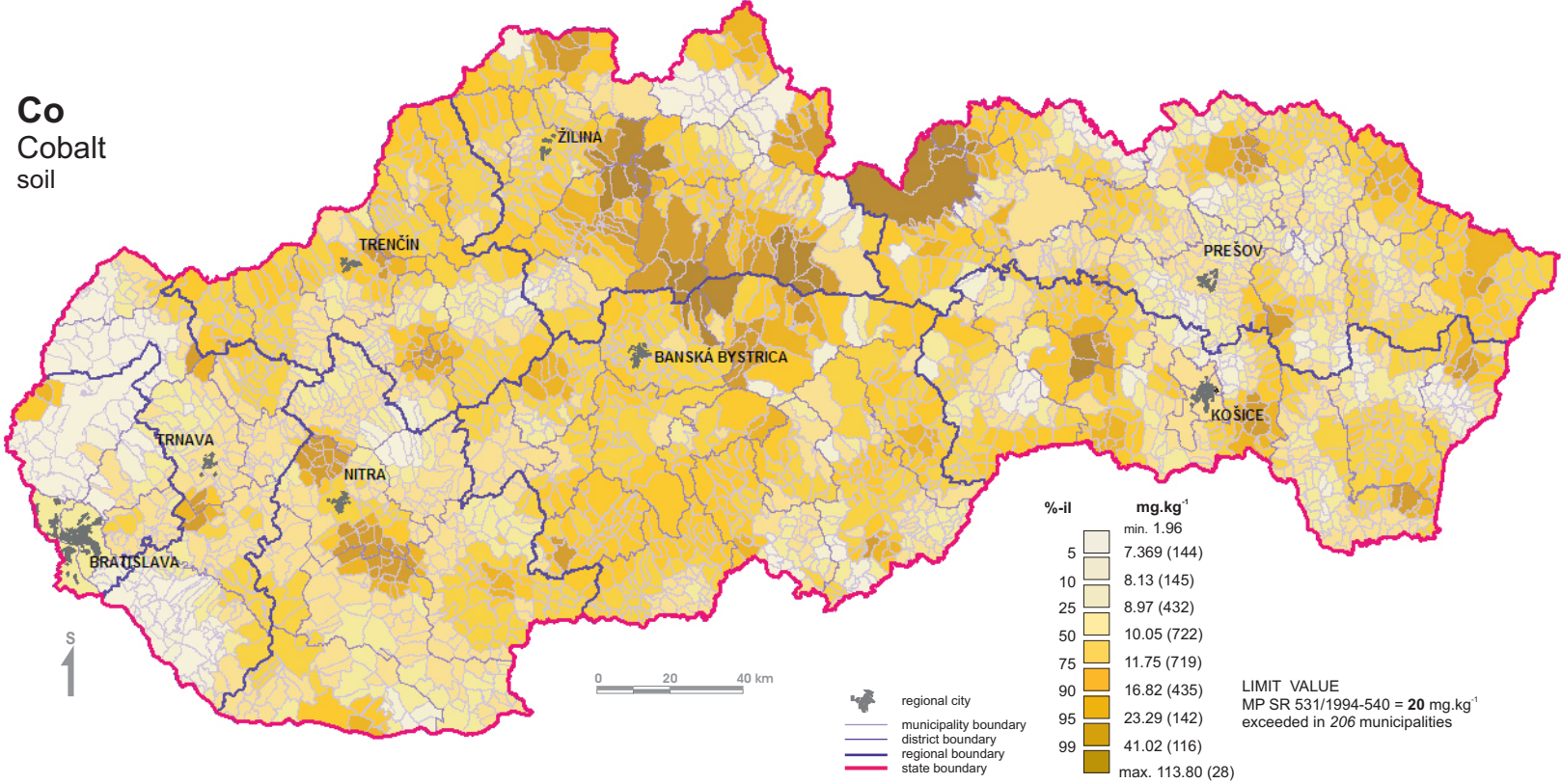


# Cobalt distribution in soils of the Slovak Republic - municipalities

**Co**  
Cobalt  
soil



%-il	mg.kg <sup>-1</sup>
	min. 1.96
5	7.369 (144)
10	8.13 (145)
25	8.97 (432)
50	10.05 (722)
75	11.75 (719)
90	16.82 (435)
95	23.29 (142)
99	41.02 (116)
	max. 113.80 (28)

LIMIT VALUE  
MP SR 531/1994-540 = 20 mg.kg<sup>-1</sup>  
exceeded in 206 municipalities

Note: No. in brackets represents number of municipalities in correspondent intervals.