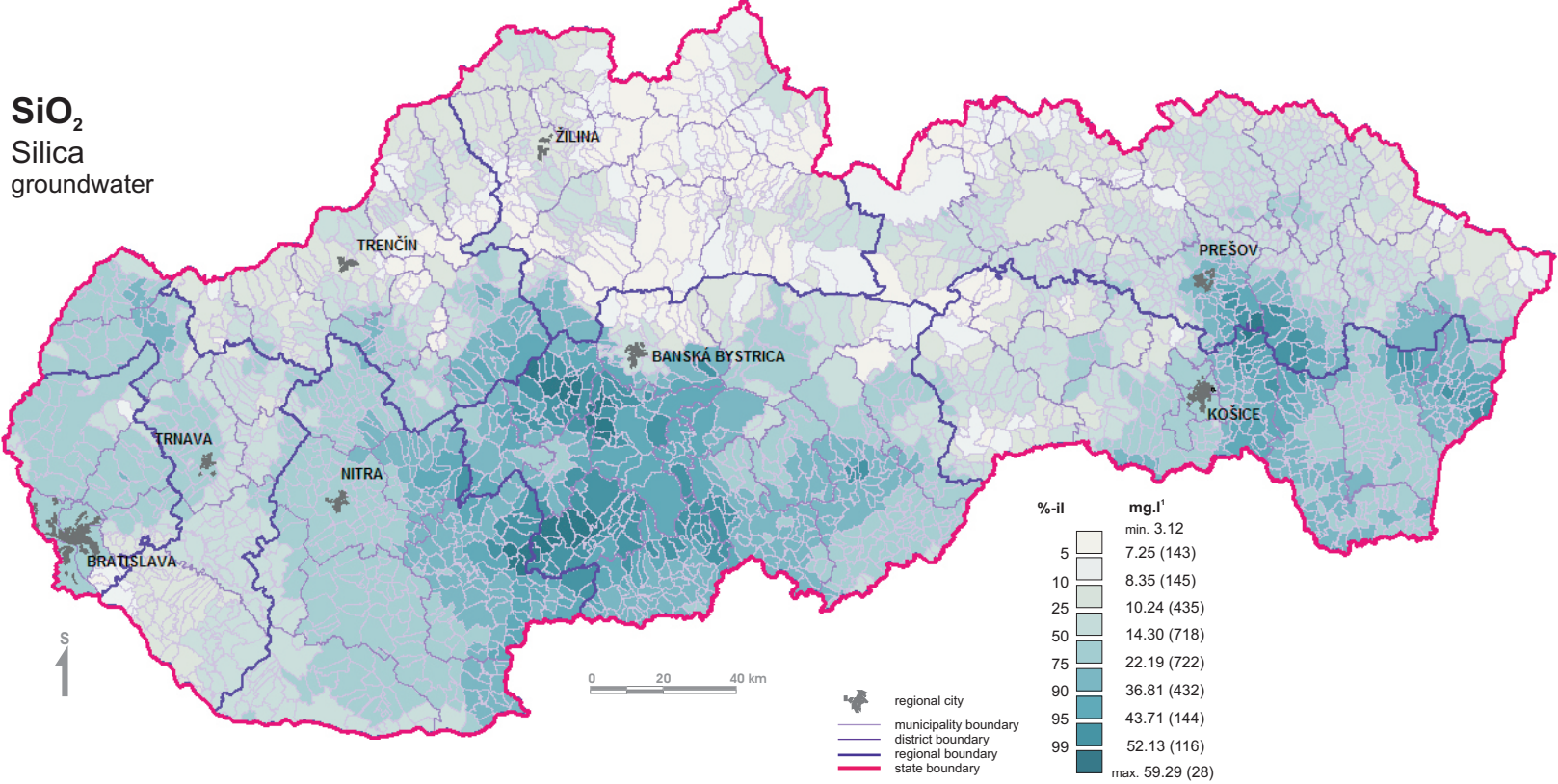


Silica distribution in groundwater of the Slovak Republic - municipalities

SiO₂
Silica
groundwater



%-il	mg.l ⁻¹
	min. 3.12
5	7.25 (143)
10	8.35 (145)
25	10.24 (435)
50	14.30 (718)
75	22.19 (722)
90	36.81 (432)
95	43.71 (144)
99	52.13 (116)
	max. 59.29 (28)

- regional city
- municipality boundary
- district boundary
- regional boundary
- state boundary

Note: No. in brackets represents number of municipalities in correspondent intervals.