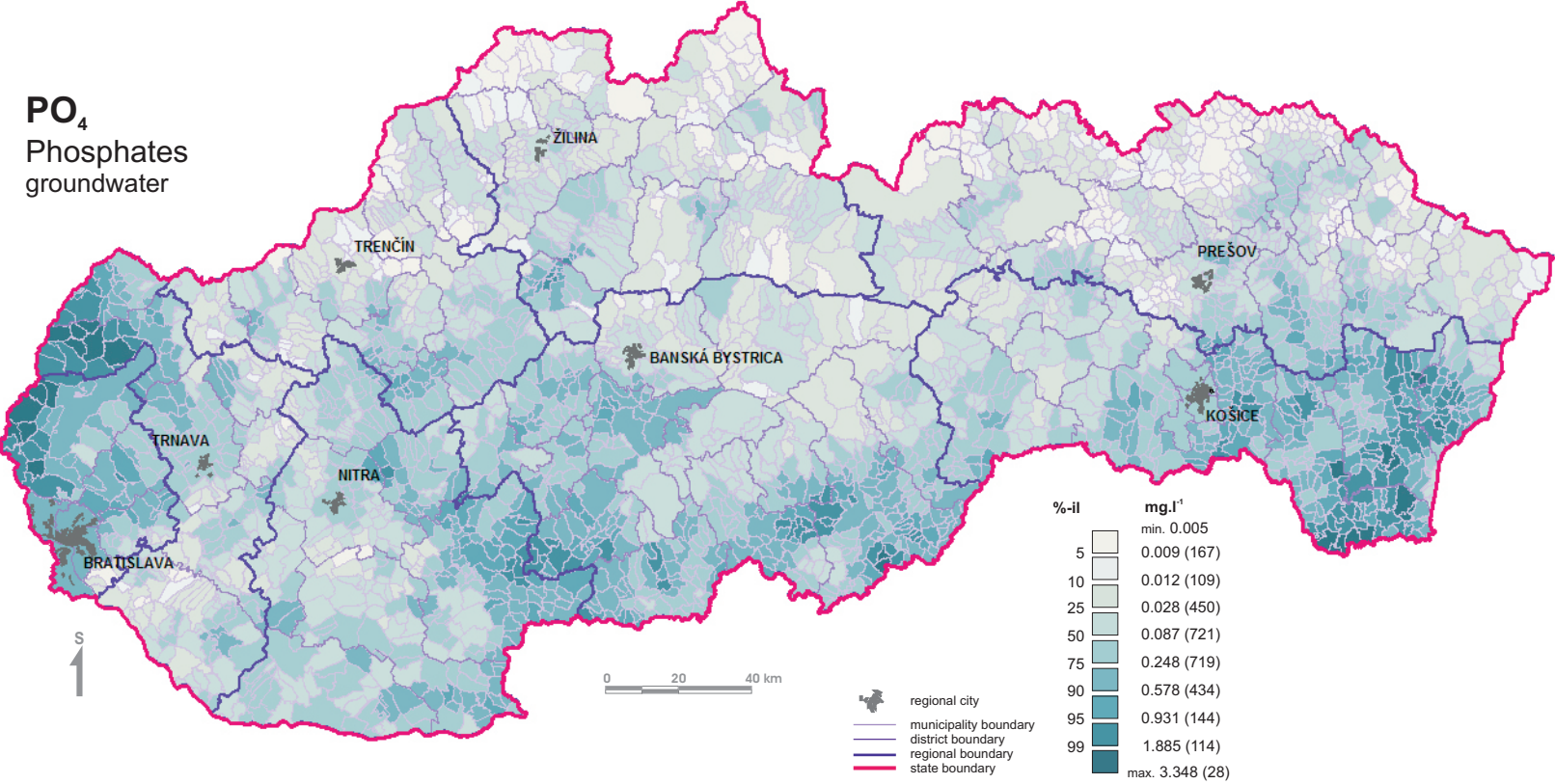


Phosphates distribution in groundwater of the Slovak Republic - municipalities

PO₄
Phosphates
groundwater



%-il	mg.l ⁻¹
	min. 0.005
5	0.009 (167)
10	0.012 (109)
25	0.028 (450)
50	0.087 (721)
75	0.248 (719)
90	0.578 (434)
95	0.931 (144)
99	1.885 (114)
	max. 3.348 (28)

Note: No. in brackets represents number of municipalities in correspondent intervals.