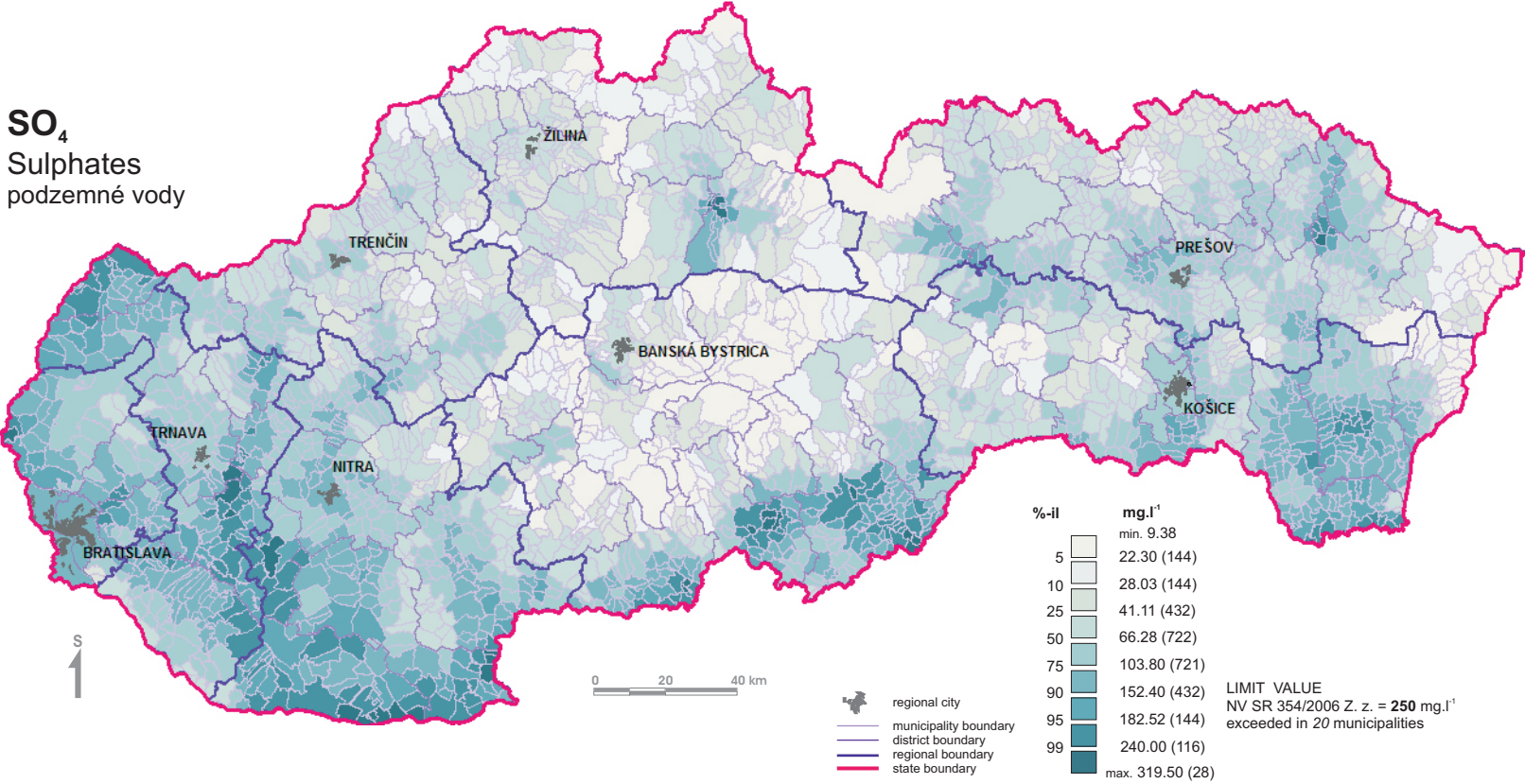


Sulphates distribution in groundwater of the Slovak Republic - municipalities

SO₄
Sulphates
podzemné vody



%-il	mg.l ⁻¹	
	min. 9.38	
5	22.30 (144)	
10	28.03 (144)	
25	41.11 (432)	
50	66.28 (722)	
75	103.80 (721)	
90	152.40 (432)	LIMIT VALUE
95	182.52 (144)	NV SR 354/2006 Z. z. = 250 mg.l ⁻¹
99	240.00 (116)	exceeded in 20 municipalities
	max. 319.50 (28)	

Note: No. in brackets represents number of municipalities in correspondent intervals.